



Santiago Canyon College
Enrollment Trends Fall 2007 to Spring 2012
 Compiled by RSCCD Research Department, May 2012

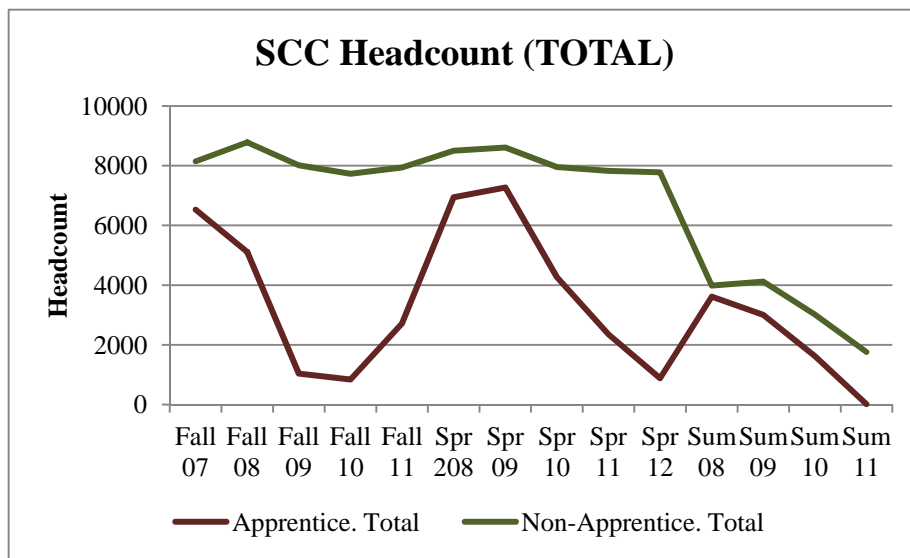
Background

In an attempt to identify enrollment trends at Santiago Canyon College that may be influenced by the tumultuous budget environment in the State, student records (in the credit programs) were analyzed. Headcounts and mean unit loads by ethnicity, age, and gender were included in the analyses. Generally, comparisons are made (gains or losses) from year-to-year, meaning fall-to-fall, spring-to-spring, and summer-to-summer; it is difficult to discern real change semester-to-semester due to programmatic differences that differ without regard to outside variables (budgetary and economic climate).

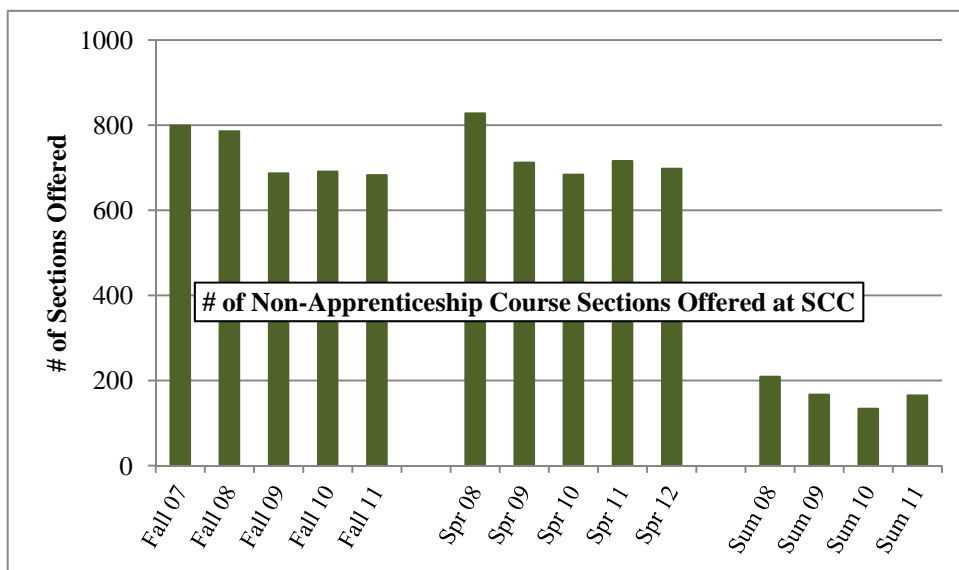
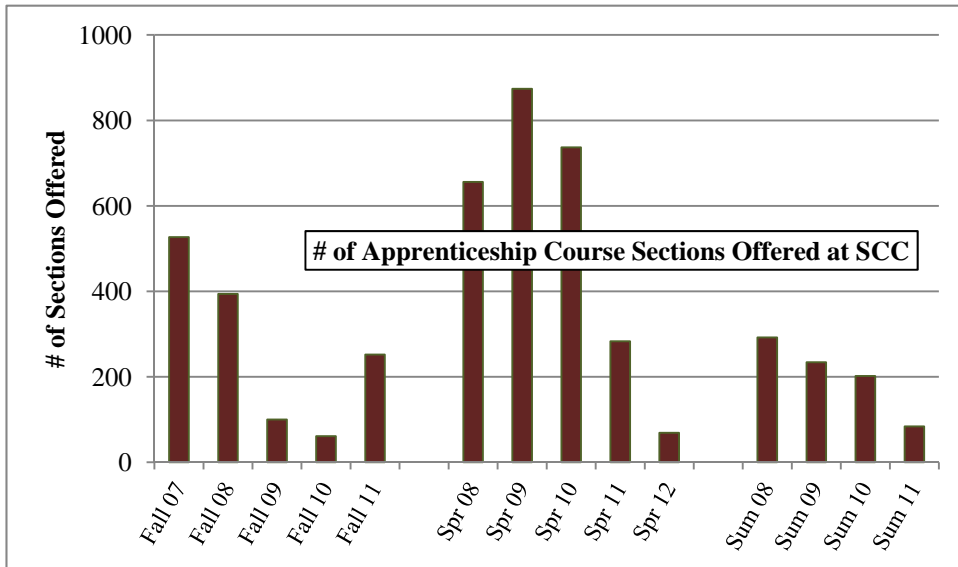
Summary of Findings

Headcount and # Course Sections Offered

- Headcount in credit coursework at SCC has declined steadily since Fall 2007 (apprenticeship classes), and since Spring 2009 (non-apprenticeship coursework). The most significant changes were in spring and summer semesters.

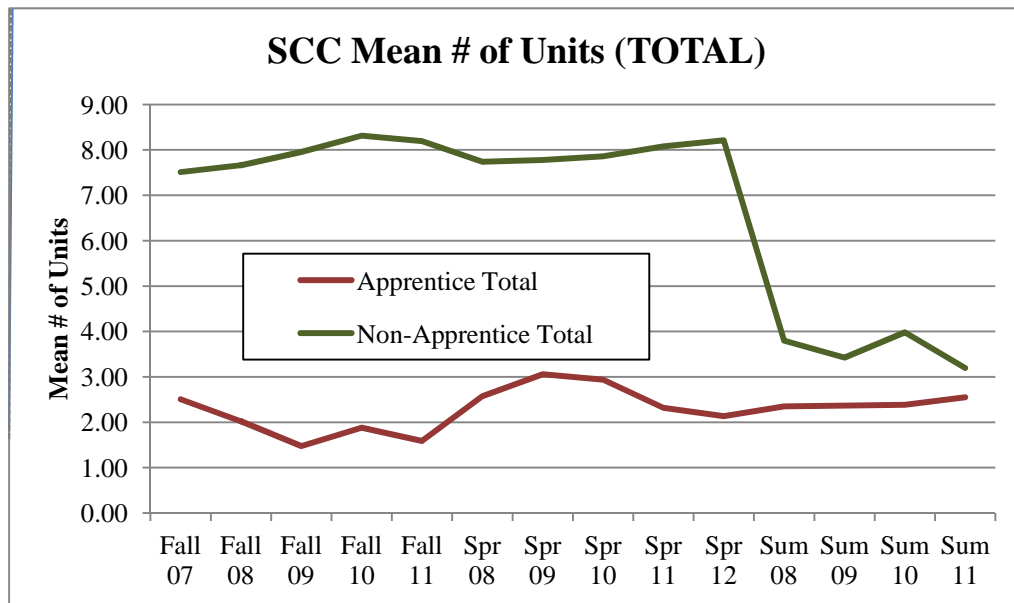


- The number of sections offered in **Apprenticeship** has varied widely; recent variances (Fall 2010 forward) are likely attributable to programmatic record-keeping changes.
- Since 2007-08, the number of sections offered in **non-apprenticeship** courses has decreased 15%-16% (fall-to-fall and spring-to-spring, respectively) and, most significantly, summer-to-summer (-21%).



Mean # of Units Enrolled

- SCC students (non-apprenticeship coursework) enrolled in the highest number of units, on average, in the 2010-11 school year (summer 2010/fall 2010/spring 2011).
- Since the 2007-08 school year, on average, the number of units actively enrolled in by SCC students in non-apprenticeship coursework increased (9% from fall-to-fall semesters, and 6% spring-to-spring).
- The mean number of units enrolled in by SCC students in summer coursework fell 16%.
- The mean number of units carried by students enrolled in Apprenticeship coursework remained fairly constant over the semesters of study.



Santiago Canyon College

	Headcount by Ethnicity, Age, and Gender (APPRENTICESHIPS)													
	Fall 07	Fall 08	Fall 09	Fall 10	Fall 11	Spr 208	Spr 09	Spr 10	Spr 11	Spr 12	Sum 08	Sum 09	Sum 10	Sum 11
Apprentice. Headcount	6526	5110	1039	841	2714	6941	7266	4268	2348	883	3617	3005	1622	14
Ethnicity														
Black	213	148	47	31	83	215	228	144	72	21	116	96	44	0
Latino	3473	2704	415	238	1084	3720	4031	2308	758	210	1698	1316	688	12
Asian	92	82	31	24	45	87	92	82	64	34	77	79	41	0
White	2139	1732	431	454	1071	2319	2286	1212	1102	489	1395	1147	622	2
other	231	168	43	43	275	244	242	319	203	27	141	167	127	0
decline to state	378	276	72	51	156	356	387	203	149	102	190	200	100	0
Age														
<20	146	86	10	5	24	152	177	60	31	7	56	24	29	0
20-25	1755	1256	147	189	506	1718	1845	1086	608	128	848	616	457	4
26-29	1306	928	203	160	447	1281	1433	841	473	126	684	564	360	7
30-39	1848	1521	319	257	767	2054	2114	1308	641	240	1123	933	451	3
40+	1471	1319	360	230	970	1736	1697	972	595	382	906	868	324	0
Gender														
female	137	120	66	27	30	147	135	64	102	74	83	67	51	1
male	6388	4990	968	812	2673	6794	7131	4184	2236	805	3534	2931	1566	13
	Headcount by Ethnicity, Age, and Gender (NON-APPRENTICESHIP)													
	Fall 07	Fall 08	Fall 09	Fall 10	Fall 11	Spr 08	Spr 09	Spr 10	Spr 11	Spr 12	Sum 08	Sum 09	Sum 10	Sum 11
Non-Apprentice. Headcount	8144	8781	8014	7728	7938	8500	8606	7956	7827	7777	3985	4119	3017	1760
Ethnicity														
Black	140	129	122	139	148	140	129	123	136	137	77	87	72	17
Latino	2507	2756	2390	2495	2917	2707	2738	2389	2579	2888	1301	1214	870	1265
Asian	791	775	677	705	680	807	785	715	709	712	542	524	395	115
White	3671	4014	3518	3252	3216	3776	3909	3520	3294	3115	1547	1656	1216	247
other	695	727	521	407	372	696	684	481	421	344	330	292	161	39
decline to state	340	380	786	730	605	374	361	728	688	581	188	346	303	77
Age														
<20	2909	3220	2522	2368	2453	2557	2668	1885	1926	2314	1543	1443	1157	517
20-25	2744	2952	3364	3411	3599	3247	3288	3745	3789	3628	1335	1612	1169	845
26-29	562	635	546	548	620	636	681	632	655	591	295	323	202	169
30-39	739	755	674	621	628	805	780	717	701	622	353	327	230	138
40+	1190	1219	895	777	638	1255	1189	972	756	622	459	414	259	91
Gender														
female	4144	4328	3872	3707	3722	4301	4233	3750	3649	3715	2196	2232	1553	958
male	4000	4453	4118	3997	4193	4199	4373	4173	4150	4039	1789	1871	1451	795

Santiago Canyon College

	% Change from Prior Year (Apprenticeship)										
	Fall 2008	Fall 2009	Fall 2010	Fall 2011	Spr 2009	Spr 2010	Spr 2011	Spr 2012	Sum 2009	Sum 2010	Sum 2011
Apprenticeship Headcount	-22%	-80%	-19%	223%	5%	-41%	-45%	-62%	-17%	-46%	-99%
Ethnicity											
Black	-31%	-68%	-34%	168%	6%	-37%	-50%	-71%	-17%	-54%	-100%
Latino	-22%	-85%	-43%	355%	8%	-43%	-67%	-72%	-22%	-48%	-98%
Asian	-11%	-62%	-23%	88%	6%	-11%	-22%	-47%	3%	-48%	-100%
White	-19%	-75%	5%	136%	-1%	-47%	-9%	-56%	-18%	-46%	-100%
other	-27%	-74%	0%	540%	-1%	32%	-36%	-87%	18%	-24%	-100%
decline to state	-27%	-74%	-29%	206%	9%	-48%	-27%	-32%	5%	-50%	-100%
Age											
<20	-41%	-88%	-50%	380%	16%	-66%	-48%	-77%	-57%	21%	-100%
20-25	-28%	-88%	29%	168%	7%	-41%	-44%	-79%	-27%	-26%	-99%
26-29	-29%	-78%	-21%	179%	12%	-41%	-44%	-73%	-18%	-36%	-98%
30-39	-18%	-79%	-19%	198%	3%	-38%	-51%	-63%	-17%	-52%	-99%
40+	-10%	-73%	-36%	322%	-2%	-43%	-39%	-36%	-4%	-63%	-100%
Gender											
female	-12%	-45%	-59%	11%	-8%	-53%	59%	-27%	-19%	-24%	-98%
male	-22%	-81%	-16%	229%	5%	-41%	-47%	-64%	-17%	-47%	-99%
	% Change from Prior Year (Non-Apprenticeship)										
	Fall 2008	Fall 2009	Fall 2010	Fall 2011	Spr 2009	Spr 2010	Spr 2011	Spr 2012	Sum 2009	Sum 2010	Sum 2011
Non-Apprenticeship Headcount	8%	-9%	-4%	3%	1%	-8%	-2%	-1%	3%	-27%	-42%
Ethnicity											
Black	-8%	-5%	14%	6%	-8%	-5%	11%	1%	13%	-17%	-76%
Latino	10%	-13%	4%	17%	1%	-13%	8%	12%	-7%	-28%	45%
Asian	-2%	-13%	4%	-4%	-3%	-9%	-1%	0%	-3%	-25%	-71%
White	9%	-12%	-8%	-1%	4%	-10%	-6%	-5%	7%	-27%	-80%
other	5%	-28%	-22%	-9%	-2%	-30%	-12%	-18%	-12%	-45%	-76%
decline to state	12%	107%	-7%	-17%	-3%	102%	-5%	-16%	84%	-12%	-75%
Age											
<20	11%	-22%	-6%	4%	4%	-29%	2%	20%	-6%	-20%	-55%
20-25	8%	14%	1%	6%	1%	14%	1%	-4%	21%	-27%	-28%
26-29	13%	-14%	0%	13%	7%	-7%	4%	-10%	9%	-37%	-16%
30-39	2%	-11%	-8%	1%	-3%	-8%	-2%	-11%	-7%	-30%	-40%
40+	2%	-27%	-13%	-18%	-5%	-18%	-22%	-18%	-10%	-37%	-65%
Gender											
female	4%	-11%	-4%	0%	-2%	-11%	-3%	2%	2%	-30%	-38%
male	11%	-8%	-3%	5%	4%	-5%	-1%	-3%	5%	-22%	-45%

Santiago Canyon College Course Sections Offered, by Subject Area and by Semester													
	Fall Semesters					Spring Semesters					Summer Semesters		
	2007	2008	2009	2010	2011	2008	2009	2010	2011	2012	2009	2010	2011
ACCOUNTING	8	8	7	8	9	10	7	8	9	8	2	2	2
AMER.COLLENG.	11	11	9	6	5	9	6	7	3	3	0	0	0
ANTHROPOLOGY	12	13	11	11	11	12	10	11	13	10	1	2	3
APD	0	0	0	0	1	0	0	0	0	0	0	0	0
APST	0	0	0	0	3	0	0	0	0	0	0	0	0
ART	49	44	32	32	31	46	39	30	31	28	5	2	3
ASTRONOMY	13	15	14	14	13	15	15	13	15	14	3	3	3
BIOLOGY	32	33	28	28	30	33	30	31	30	34	9	8	10
BUSINESS	19	21	20	20	22	26	17	19	20	21	5	5	4
CHEMISTRY	9	10	9	10	11	10	9	9	11	14	2	2	2
CHICANO STUDIES	0	1	1	1	1	0	1	1	1	1	0	0	0
COMMUNICATIONS	34	36	25	25	25	40	26	22	23	22	8	6	7
COMP. INFO SYST.	3	5	4	4	4	5	5	4	6	6	0	0	0
COMPUTER SCI.	16	14	10	11	14	14	13	11	12	12	2	1	3
COSMETOLOGY	6	6	6	6	0	6	6	6	4	0	5	6	2
COUNSELING	23	24	23	22	22	23	20	19	22	21	6	4	8
CRIMINAL JUSTICE	4	3	3	3	3	4	3	3	3	3	1	1	1
CRIM JUSTICE ACA	0	0	0	0	0	0	1	0	0	0	0	0	0
DANCE	9	10	9	9	3	11	10	9	10	5	2	0	0
EARTH SCIENCE	3	3	3	3	3	5	5	5	5	4	1	1	1
ECONOMICS	10	10	10	9	9	11	9	9	9	9	2	1	3
EDUCATION	2	2	1	2	0	2	2	2	2	4	0	0	0
ELECTRONICS	3	0	0	0	2	0	0	0	2	0	0	0	2
ENGLISH	78	74	78	77	73	69	60	65	66	67	11	7	9
ENVIR.STUDIES	0	0	1	1	1	1	1	2	2	2	1	1	1
ETHNIC STUDIES	0	1	1	1	1	1	1	1	1	1	0	0	0
EXERCISE SCIENCE	44	48	42	37	34	50	42	35	37	33	13	11	9
FRENCH	7	4	2	2	2	7	5	3	3	3	0	0	0
GEMOLOGY	5	3	3	3	3	4	4	4	4	4	2	0	0
GEOGRAPHY	5	4	4	4	4	4	4	4	4	4	0	0	0
GEOLOGY	9	8	7	7	7	8	7	6	6	7	2	2	2
HISTORY	27	24	24	24	24	28	24	24	29	27	9	7	10
HUMAN DEVELOP.	14	8	6	5	6	11	6	5	6	6	1	1	2
INTERDISC.STUDIES	7	6	3	3	3	7	6	3	3	3	0	1	1
ITALIAN	7	7	3	1	1	7	6	0	2	1	0	0	0
LIBRARY STUDIES	2	2	2	2	2	3	2	3	2	1	0	0	0
LIBRARY TECHNOL.	0	0	1	1	1	0	0	1	1	1	0	1	1
MANAGEMENT	6	6	6	6	6	7	7	7	8	8	2	2	2
MARKETING	5	4	3	2	4	4	3	4	6	5	2	2	2
MATH	87	92	85	103	107	93	82	108	104	107	22	19	25
MUSIC	32	33	21	19	15	31	31	20	16	24	6	3	5
NUTRITION	2	2	2	2	3	2	4	2	3	3	0	0	0
PHILOSOPHY	26	26	22	22	22	30	27	27	27	27	5	4	5
PHYSICAL SCIENCE	2	1	1	1	1	1	0	0	0	0	0	0	0

Santiago Canyon College Course Sections Offered, by Subject Area and by Semester													
	Fall Semesters					Spring Semesters					Summer Semesters		
	2007	2008	2009	2010	2011	2008	2009	2010	2011	2012	2009	2010	2011
PHYSICS	6	6	4	5	5	7	6	6	6	7	2	2	2
POLITICAL SCIENCE	23	19	18	18	18	26	22	19	21	19	6	5	6
PSYCHOLOGY	20	19	17	16	16	21	20	18	20	18	8	6	7
PUBLIC WORKS	10	12	13	11	9	9	8	13	12	7	5	3	3
READING	9	7	7	7	7	6	4	5	6	8	1	0	0
REAL ESTATE	8	6	3	4	4	8	6	3	5	5	0	0	3
SIGN LANGUAGE	7	7	7	7	7	9	7	8	8	7	0	0	1
SOCIAL SCIENCE	6	6	6	6	7	7	7	7	7	9	2	3	3
SOCIOLOGY	10	10	9	10	10	12	11	9	12	10	3	2	2
SPANISH	19	19	15	14	13	18	18	14	14	13	3	2	3
SPECIAL SERVICES	3	3	3	3	2	3	3	3	3	2	2	1	1
STUDY SKILLS	1	4	1	1	1	4	4	1	1	1	0	1	1
SURVEYING	6	8	6	5	4	7	6	5	4	5	1	0	0
THEATRE ARTS	8	9	9	9	10	9	8	7	9	8	1	1	2
TRANS	0	0	0	1	1	0	0	1	1	1	0	1	1
TRAVEL/TOURISM	3	0	0	0	0	4	0	0	0	0	0	0	0
TV VIDEO COMM	9	9	8	8	9	10	9	4	8	7	1	1	1
WATER UTILITIES	16	16	15	15	14	14	13	14	14	14	2	1	1
WOMEN'S STUDIES	4	4	4	4	4	4	4	4	4	4	0	0	0
NON-APPRENTICE	799	786	687	691	683	828	712	684	716	698	167	134	165
APPRENTICESHIP	527	394	100	61	252	656	874	737	283	69	234	202	84
TOTAL	1326	1180	787	752	935	1484	1586	1421	999	767	401	336	249

Santiago Canyon College														
Mean Unit Load of Apprenticeship Students by Ethnic, Age, and Gender														
	Fall Semesters					Spring Semesters					Summer Semesters			
	2007	2008	2009	2010	2011	2008	2009	2010	2011	2012	2008	2009	2010	2011
Apprentice Total	2.51	2.02	1.47	1.88	1.59	2.58	3.06	2.94	2.32	2.13	2.35	2.37	2.38	2.55
Ethnicity														
Black	2.68	2.33	1.98	2.17	1.67	2.96	3.06	2.88	2.49	2.33	2.56	2.33	2.63	.00
Latino	2.31	1.74	1.33	1.80	1.31	2.26	2.94	2.99	2.36	1.59	1.97	2.02	2.47	2.64
Asian	2.40	2.71	1.50	2.33	2.18	2.90	3.96	3.19	2.49	2.57	2.87	2.17	2.54	.00
White	2.86	2.39	1.45	1.86	1.67	3.06	3.28	2.85	2.28	2.18	2.74	2.87	2.36	2.00
other	2.52	2.25	1.77	1.88	1.83	2.73	3.13	3.06	2.19	1.90	2.55	1.84	2.11	.00
decline/state	2.28	1.97	1.90	2.03	2.32	2.30	2.69	2.63	2.46	2.90	2.42	2.36	2.14	.00
Age														
<20	2.84	2.10	1.95	2.40	2.12	2.58	3.38	3.32	2.18	3.36	2.11	2.09	2.48	.00
20-25	3.02	2.54	2.01	2.33	2.43	3.26	3.77	3.78	2.51	3.29	2.85	3.10	2.51	3.38
26-29	2.79	2.40	2.01	2.35	2.15	2.97	3.51	3.43	2.72	2.85	2.68	3.18	2.50	2.64
30-39	2.48	2.03	1.60	2.03	1.65	2.58	3.12	2.86	2.59	2.39	2.31	2.43	2.57	1.23
40+	1.65	1.24	.83	1.00	.83	1.61	1.79	1.66	1.52	1.32	1.70	1.26	1.81	.00
Gender														
female	2.46	2.33	2.43	2.39	2.29	2.81	3.09	2.19	2.27	3.38	2.10	2.44	2.88	.50
male	2.51	2.01	1.41	1.86	1.58	2.57	3.06	2.95	2.32	2.02	2.35	2.37	2.37	2.71
Non-Apprentice Total														
	Fall Semesters					Spring Semesters					Summer Semesters			
	2007	2008	2009	2010	2011	2008	2009	2010	2011	2012	2008	2009	2010	2011
Non-Apprentice Total	7.51	7.66	7.96	8.31	8.19	7.74	7.78	7.86	8.08	8.21	3.80	3.43	3.98	3.20
Ethnicity														
Black	6.21	7.07	6.79	8.48	7.89	7.13	7.00	6.56	8.40	7.49	4.48	2.87	3.61	2.79
Latino	7.45	7.67	7.88	8.13	8.08	7.71	7.76	7.59	7.87	8.15	3.97	3.48	4.11	3.19
Asian	7.84	7.96	8.46	8.20	8.29	8.26	8.38	8.55	8.17	8.59	3.98	3.67	4.16	3.48
White	7.56	7.63	7.86	8.36	8.27	7.74	7.77	7.81	8.04	8.18	3.60	3.32	3.83	3.20
other	7.61	8.04	7.95	8.16	7.67	7.81	8.01	8.16	8.21	7.82	3.76	3.52	4.20	2.93
decline/state	7.02	6.75	8.35	8.92	8.66	6.86	6.54	8.29	8.84	8.60	3.48	3.44	4.01	3.02
Age														
<20	9.83	9.81	9.76	10.28	10.13	9.87	9.70	9.30	9.60	9.89	3.74	3.47	3.98	3.42
20-25	7.83	7.95	8.28	8.57	8.16	8.51	8.41	8.71	8.66	8.37	4.24	3.67	4.23	3.27
26-29	5.75	6.12	6.68	6.53	6.53	6.30	6.60	6.65	6.68	6.82	4.03	3.38	4.26	3.07
30-39	5.13	5.30	5.74	5.93	6.12	5.44	5.62	5.72	5.96	5.96	3.75	3.46	3.97	2.61
40+	3.42	3.54	4.08	4.37	4.58	3.60	3.80	4.17	4.43	4.64	2.58	2.35	2.71	2.40
Gender														
female	7.63	7.61	8.05	8.36	8.38	7.72	7.83	7.93	8.20	8.32	3.80	3.49	4.05	3.24
male	7.38	7.71	7.87	8.28	8.04	7.75	7.73	7.81	7.99	8.13	3.80	3.34	3.91	3.14