

EXHIBIT D

Central Mall Landscape Walking Tour



California Lilac - *Ceanothus griseus* 'Yankee Point': This shrub displays a truly handsome appearance with its glossy, dark green leaves and deep blue flower clusters. It is no wonder it is an attraction to butterflies, hummingbirds and beneficial insects.



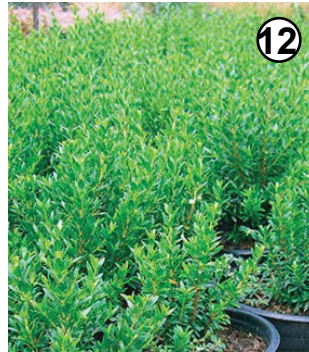
Rock Purslane-*Cistanthe grandiflora*: This succulent plant is native to Chile. It exhibits fleshy, egg-shaped gray-green leaves. In spring through fall, it grows to 2'-3' in height and births beautiful 2" wide purple flowers that each last only one day.



Lantana-*Lantana spp.*: A gorgeous vividly colored butterfly magnet that blooms in abundance with little attention. This trailing variety, native to South America, can reach heights of 12" to 15" and makes a wonderful choice for year round ground cover.



Mexican Lobelia-*Lobelia laxiflora*: This eye-catching 2' to 4' tall drought tolerant perennial is native to Arizona, Mexico and Central America. These bright tubular orange and red summer flowers display vibrant throats of yellow and orange.



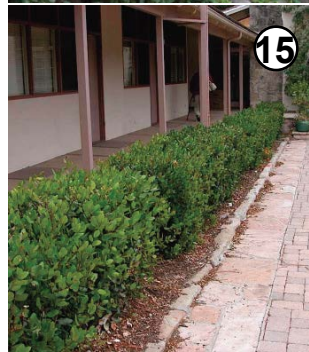
Dwarf Myrtle-*Myrtus communis* 'compacta': This is a popular, compact tightly branched evergreen shrub with creamy white flowers. It is native to southern Japan and proves to be very dependable as a low hedge and foundation plant.



Dwarf Olive-*Olea europaea* 'Little Ollie': This gray-green evergreen shrub thrives in hot, dry areas as well as coastal regions. Even though it is named a dwarf, this non-fruit bearing shrub will grow to 8' in height.



Coffeeberry - *Rhamnus californica*: This California native is a richly colored evergreen shrub that reaches 6' to 8' in height. It thrives in sun or partial shade and in all soil types. In late summer, this variety reveals large green and black berries.



Lemonade Berry - *Rhus integrifolia*: This robust evergreen shrub exhibits aromatic leaves and produces small white to pink flowers as well as red berries. This California native can reach 30' in height.



Palos Verdes-*Parkinsonia 'Desert Museum'*: This stunning, thornless hybrid makes a fine, upright shade tree. Large yellow blossoms display a dazzling exhibition of color in the spring, lasting longer than any other in the species.



Coast Live Oak-*Quercus agrifolia*: This round-headed evergreen tree is native to California and is quite appealing to butterflies. This hardy tree can reach 15' to 40' in height and grow as wide as 20'.

Water conservation can be beautiful. Santa Ana College proudly displays a new Central Mall as part of the efforts mandated by the Governor to reduce water consumption. It was constructed as a Site Improvement Beautification Project funded by Measure Q. The selected drought tolerant landscape includes many California native plants. The Central Mall utilizes an efficient water-wise irrigation system which reduces watering to only once a week.

Please enjoy the Central Mall Landscape Walking Tour.



3

Holly Oak-*Quercus ilex*: This richly colored evergreen oak exhibits lush dark green leaves. With its height ranging from 30' to 60', it will prove to be a prime source of shade throughout the year.



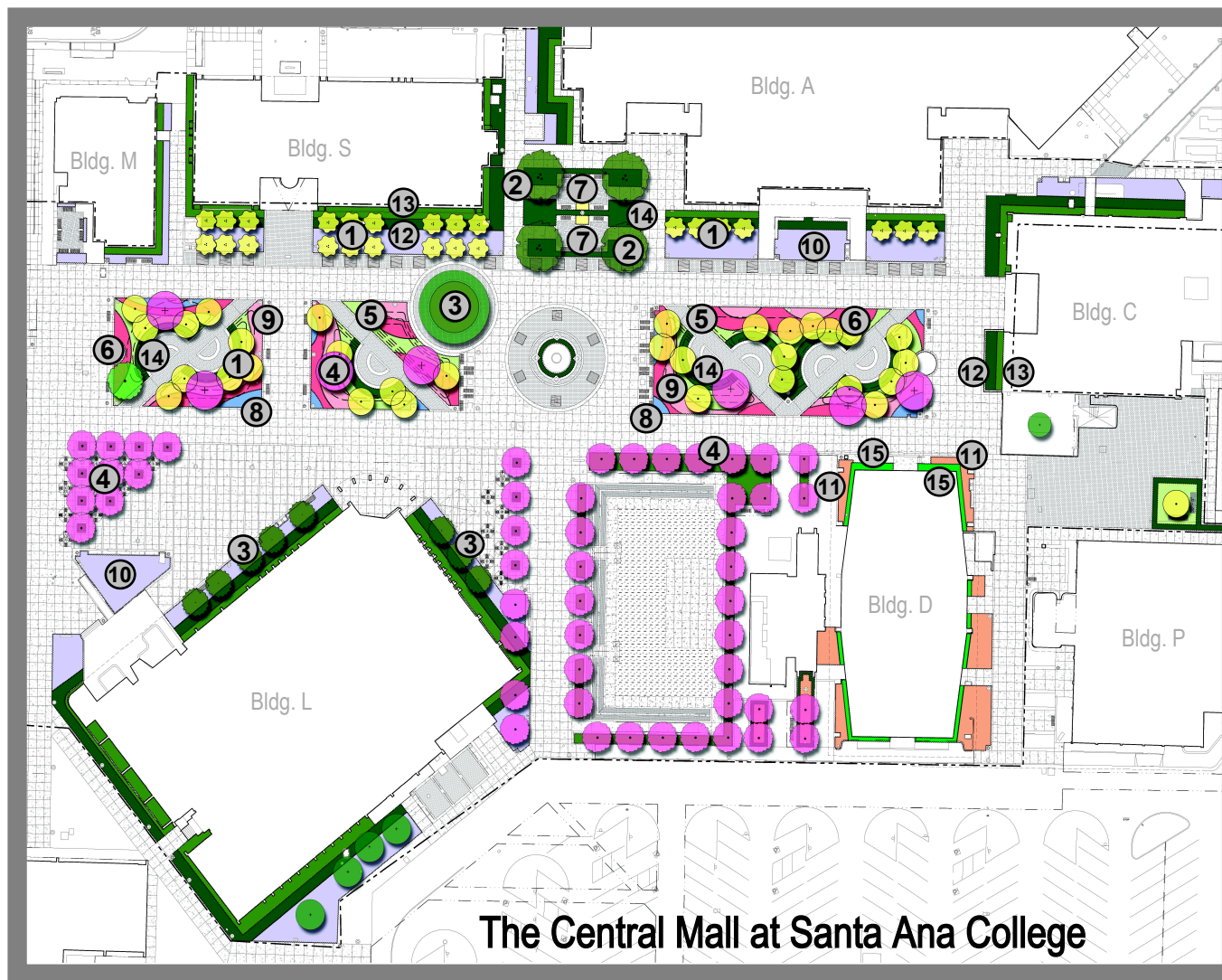
4

Pink Trumpet Tree-*Tabebuia impetiginosa*: This breathtaking flowering tree is recognized by its soft pink blossoms. This hardy deciduous tree is native to Mexico through Argentina and can reach a height of up to 90'.



5

Fox Tail Agave-*Agave attenuata*: This Central Mexican native makes a bold statement to the landscape with its unusual shape. Its large rosette of light green leaves are perched on a long curving trunk.



The Central Mall at Santa Ana College



6

Kangaroo Paw-*Anigozanthos spp.*: This distinct warm-weather perennial displays various tall, brightly colored, velvety flowers amongst its grassy leaves. The buds of this Australian native resemble a kangaroo paw. Butterflies and hummingbirds are attracted to this special variety.



7

Bulbine-*Bulbine frutescens*: This beautiful South African native is an excellent erosion control selection. Its expansive hardy ground cover of succulent evergreen leaves bearing clusters of small yellow flowers can be found all year round.