

**RSCCD Staff Profile: Employees by Category 2008 - 2013**

	<b>FT Faculty</b>	<b>FT Classified</b>	<b>PT Classified</b>	<b>Management</b>
<b>08-09</b>	394	550	390	123
<b>09-10</b>	374	511	275	116
<b>10-11</b>	361	469	227	106
<b>11-12</b>	368	473	230	107
<b>12-13</b>	358	459	222	104
<b>13-14</b>	358	457	219	109

**Data reflect employees in paid status as of September 1st of each year**

**SCC Staff Profile: Employees by Category 2008 - 2013**

	<b>FT Faculty</b>	<b>FT Classified</b>	<b>PT Classified</b>	<b>Management</b>
<b>08-09</b>	110	116	82	25
<b>09-10</b>	104	125	61	26
<b>10-11</b>	102	117	48	25
<b>11-12</b>	105	120	54	22
<b>12-13</b>	102	106	50	19
<b>13-14</b>	102	103	49	23

**Data reflect employees in paid status as of September 1st of each year**

**SAC Staff Profile: Employees by Category 2008 - 2013**

	<b>FT Faculty</b>	<b>FT Classified</b>	<b>PT Classified</b>	<b>Management</b>
<b>08-09</b>	242	262	261	36
<b>09-10</b>	231	284	200	38
<b>10-11</b>	217	255	170	33
<b>11-12</b>	225	255	168	36
<b>12-13</b>	216	227	148	32
<b>13-14</b>	219	227	148	33

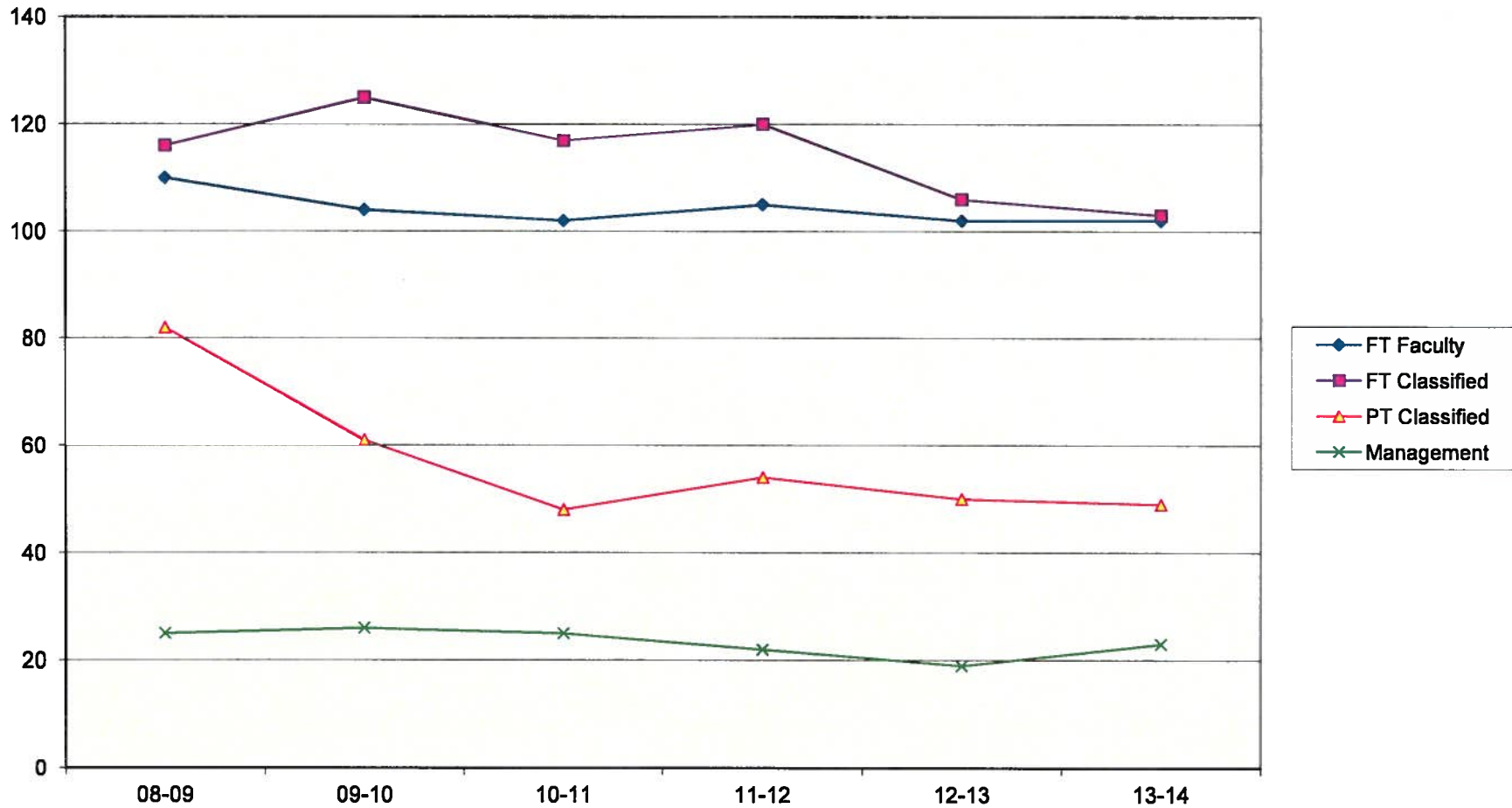
**Data reflect employees in paid status as of September 1st of each year**

**DO Staff Profile: Employees by Category 2008 - 2013**

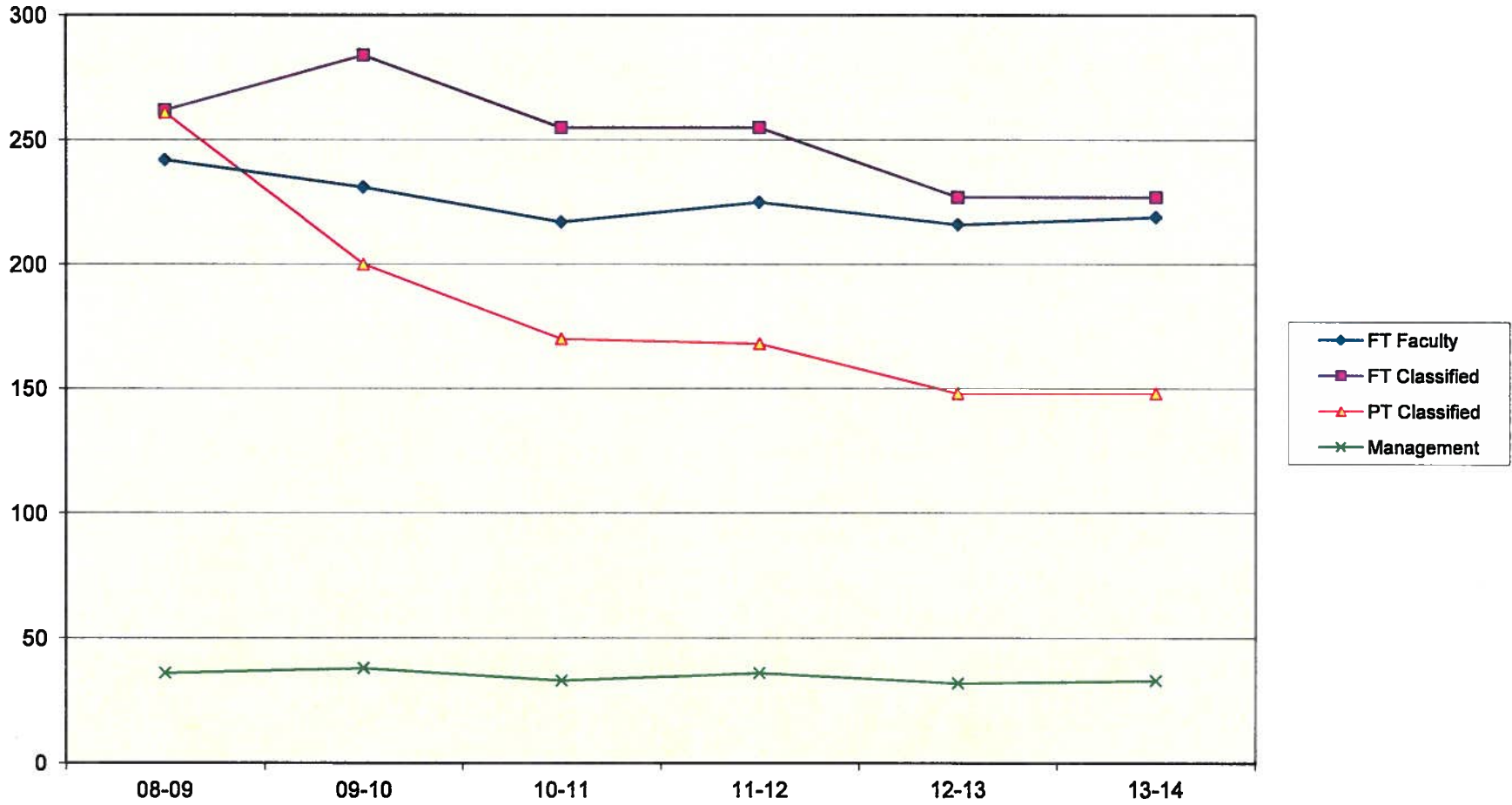
	<b>FT Faculty</b>	<b>FT Classified</b>	<b>PT Classified</b>	<b>Management</b>
<b>08-09</b>	42	172	47	62
<b>09-10</b>	39	102	14	52
<b>10-11</b>	42	97	9	48
<b>11-12</b>	38	98	8	50
<b>12-13</b>	40	126	24	53
<b>13-14</b>	37	127	22	53

**Data reflect employees in paid status as of September 1st of each year**

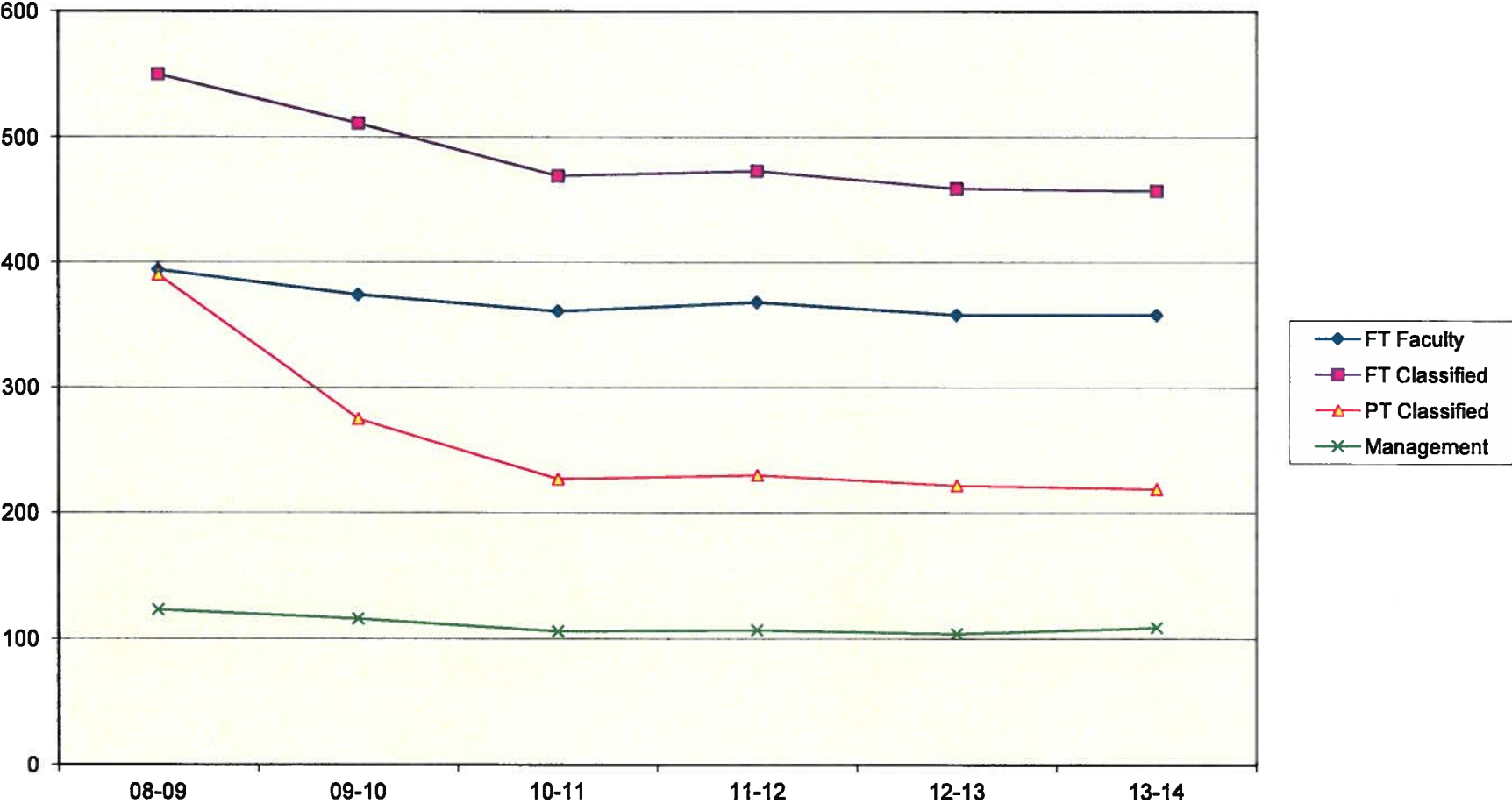
## SCC Annual Change in Employees by Category -- Six Year Trend



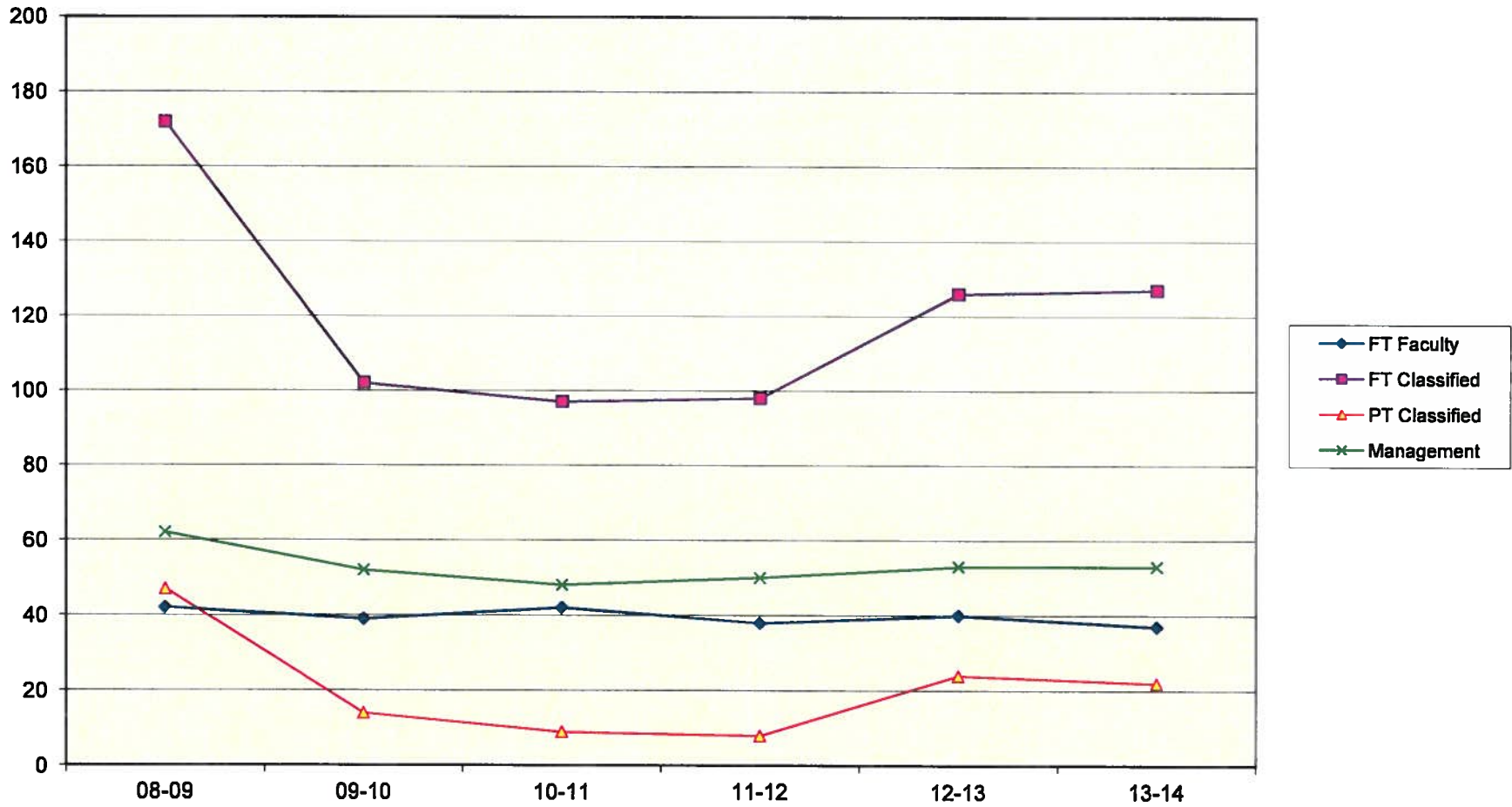
## SAC Annual Change in Employees by Category -- Six Year Trend



**RSCCD Annual Change in Employees by Category -- Six Year Trend**



## DO Annual Change in Employees by Category -- Six Year Trend





**SCC Staff Diversity: Percentage of Non-White Employees 2008 - 2013**

	<b>FT Faculty</b>	<b>PT Faculty</b>	<b>FT Classified</b>	<b>PT Classified</b>	<b>Management</b>	<b>Total</b>
<b>08-09</b>	30%	34%	65%	63%	44%	41%
<b>09-10</b>	28%	35%	65%	69%	46%	42%
<b>10-11</b>	28%	33%	61%	73%	48%	40%
<b>11-12</b>	31%	32%	62%	69%	45%	41%
<b>12-13</b>	30%	32%	63%	70%	53%	41%
<b>13-14</b>	30%	34%	65%	69%	61%	41%

**Data reflect employees in paid status as of September 1st of each year**

**RSCCD Staff Diversity: Percentage of Non-White Employees 2008 - 2013**

	<b>FT Faculty</b>	<b>PT Faculty</b>	<b>FT Classified</b>	<b>PT Classified</b>	<b>Management</b>	<b>Total</b>
<b>08-09</b>	39%	38%	63%	74%	52%	47%
<b>09-10</b>	39%	38%	64%	76%	51%	46%
<b>10-11</b>	40%	37%	64%	77%	51%	46%
<b>11-12</b>	41%	36%	64%	75%	51%	46%
<b>12-13</b>	41%	34%	66%	77%	52%	46%
<b>13-14</b>	42%	38%	68%	78%	53%	47%

**Data reflect employees in paid status as of September 1st of each year**

**DO Staff Diversity: Percentage of Non-White Employees 2008 - 2013**

	<b>FT Faculty</b>	<b>FT Classified</b>	<b>PT Classified</b>	<b>Management</b>	<b>Total</b>
<b>08-09</b>	81%	54%	72%	55%	60%
<b>09-10</b>	82%	54%	64%	58%	61%
<b>10-11</b>	83%	55%	67%	58%	62%
<b>11-12</b>	82%	55%	75%	61%	63%
<b>12-13</b>	82%	61%	83%	57%	66%
<b>13-14</b>	86%	65%	91%	58%	69%

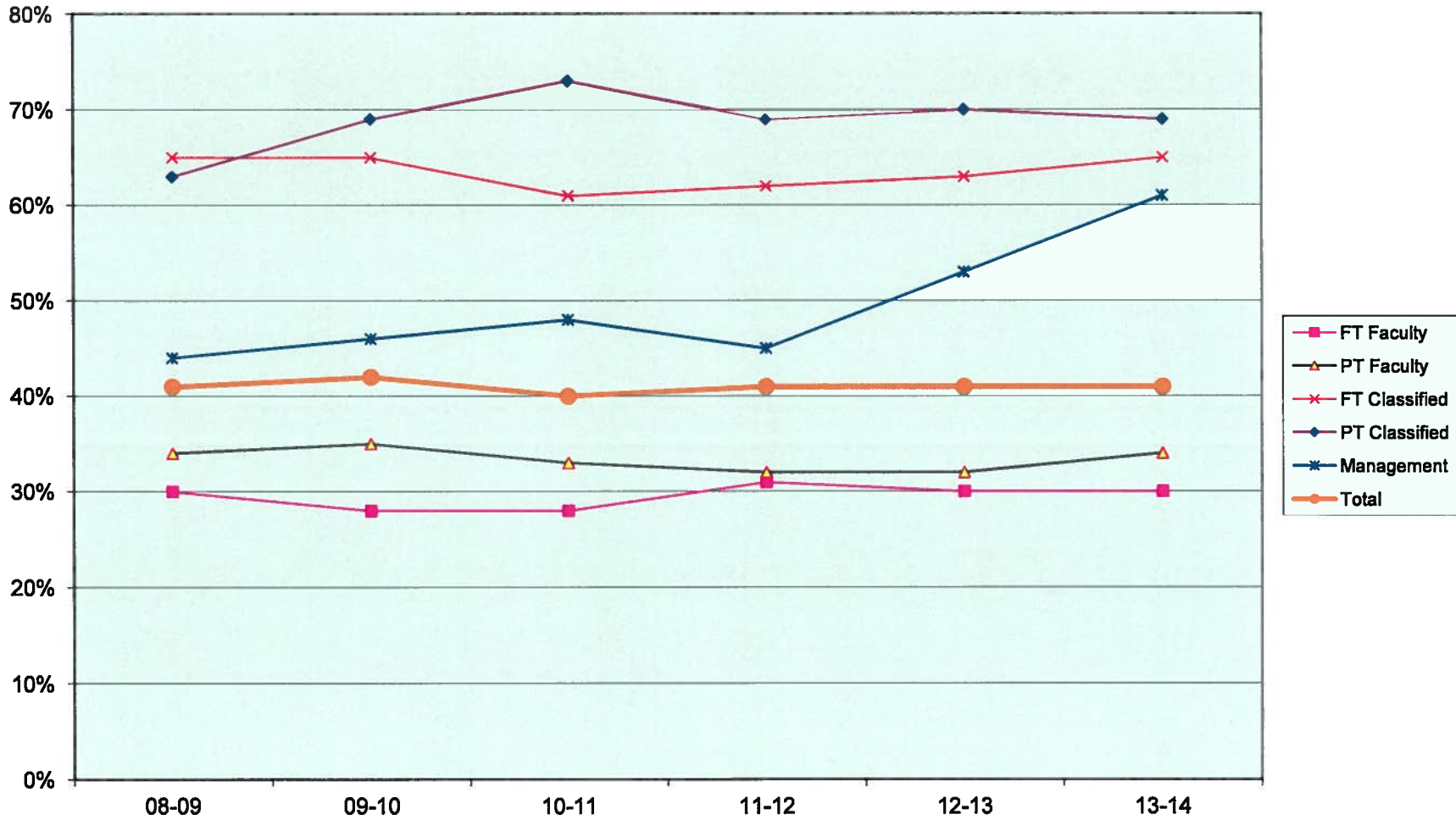
**Data reflect employees in paid status as of September 1st of each year**

**SAC Staff Diversity: Percentage of Non-White Employees 2008 - 2013**

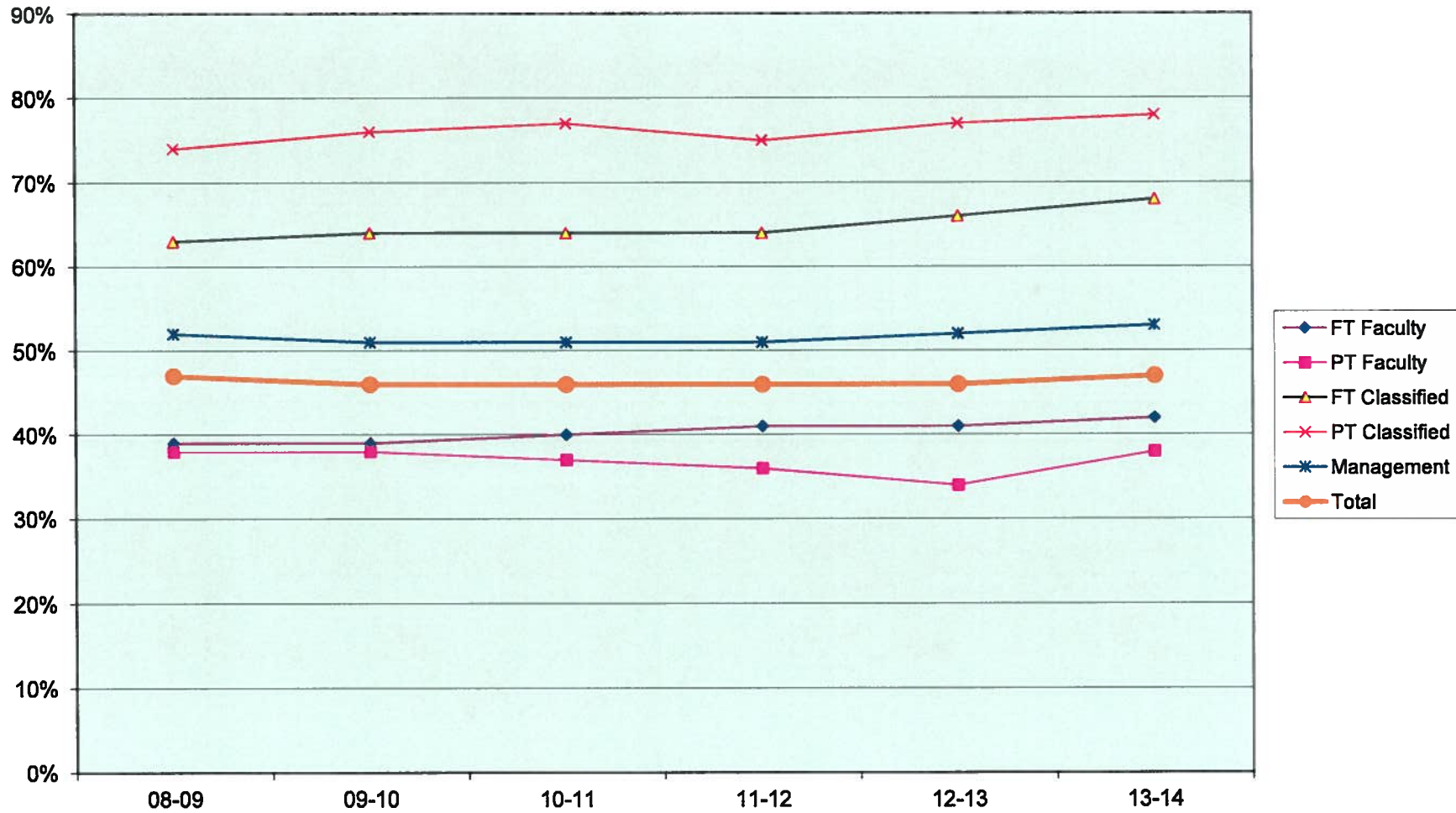
	<b>FT Faculty</b>	<b>PT Faculty</b>	<b>FT Classified</b>	<b>PT Classified</b>	<b>Management</b>	<b>Total</b>
<b>08-09</b>	36%	39%	68%	78%	53%	41%
<b>09-10</b>	37%	39%	67%	79%	45%	42%
<b>10-11</b>	37%	38%	69%	78%	42%	40%
<b>11-12</b>	38%	38%	69%	77%	42%	41%
<b>12-13</b>	38%	38%	70%	78%	44%	41%
<b>13-14</b>	40%	39%	72%	79%	39%	41%

**Data reflect employees in paid status as of September 1st of each year**

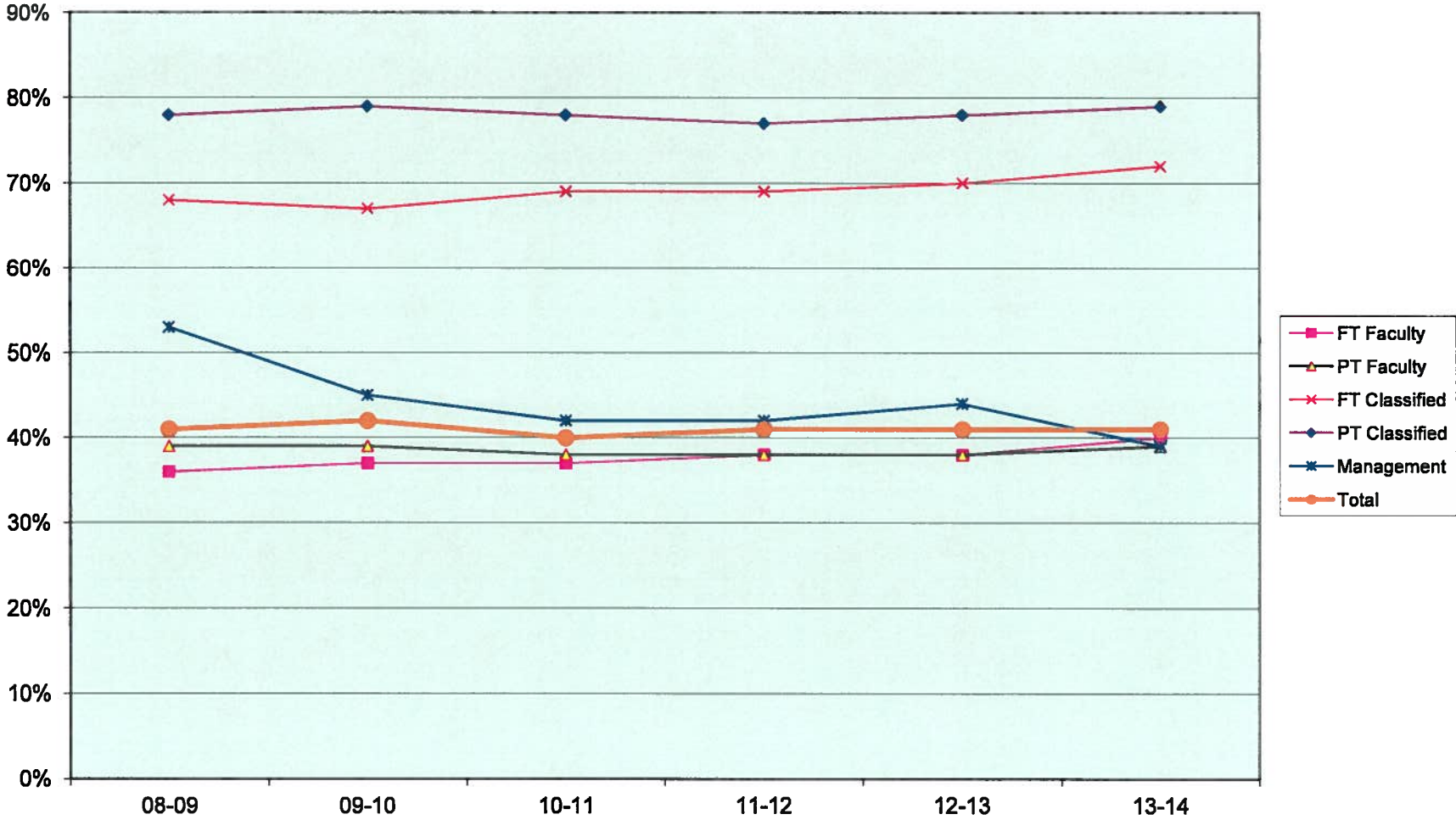
### SCC Ethnic Diversity: Percent of Non-White Employees -- Six Year Trend



## RSCCD Ethnic Diversity: Percent of Non-White Employees -- Six Year Trend



### SAC Ethnic Diversity: Percent of Non-White Employees -- Six Year Trend



## DO Ethnic Diversity: Percent of Non-White Employees -- Six Year Trend

