

# RSCCD AT A GLANCE

- **Students Served:** In 2023/24, RSCCD served over 106,000 students, including many mid-career professionals seeking to reskill or advance their careers.
- **Diversity:** RSCCD's student body is 56% Latinx, 9% Asian/Pacific Islander/Filipino, and 20% White. Recognized as a Hispanic-Serving Institution (HSI) and an Asian-American and Native American Pacific Islander-Serving Institution (AANAPISI), RSCCD is a leader in graduating minority students.
- **Economic Impact:** RSCCD contributes about \$2 billion annually to the local economy, supporting nearly 21,000 jobs.
- **Career Technical Education (CTE):** As the fiscal agent for the Orange County Regional Consortium, RSCCD offers programs in healthcare, business, automotive, and other high-demand fields.
- RSCCD is a major player in workforce development, expanding apprenticeship programs and career training pathways in healthcare, technology, and the skilled trades. These initiatives help students transition into high-wage careers while meeting the region's growing demand for skilled professionals.
- **Apprenticeships:** RSCCD, under Chancellor Marvin Martinez, has prioritized apprenticeship opportunities, securing \$2.25 million to train 25 new apprentices annually in early childhood education.
- **Economic Contributions:** In 2020-2021, RSCCD added \$2 billion to the local economy, supporting 21,000 jobs. Santa Ana College's operations alone contributed over \$1.1 billion in 2022-2023.
- **Dual Enrollment:** RSCCD partners with local high schools, allowing students to earn college credits through dual enrollment programs. Santiago Canyon College's dual enrollment program achieves a 92% retention rate.

Through strategic partnerships and targeted programs, RSCCD ensures that graduates are prepared for in-demand careers, contributing to both their personal success and the vitality of the regional economy.

To view Economic Impact Reports, scan below



RSCCD BOARD OF TRUSTEES: Tina Arias Miller, Ed.D. • David Crockett • John R. Hanna  
 Zeke Hernandez • Cecilia P. Iglesias • Daisy X. Tong • Phillip E. Yarbrough  
 RSCCD CHANCELLOR: Marvin Martinez  
 SANTA ANA COLLEGE PRESIDENT: Annebelle Nery, Ph.D.  
 SANTIAGO CANYON COLLEGE PRESIDENT: Jeannie G. Kim, Ph.D.

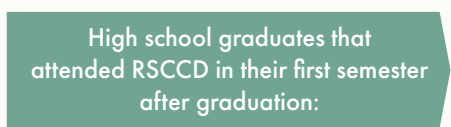
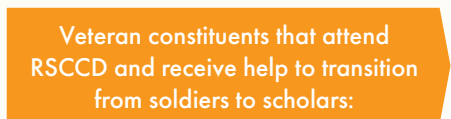
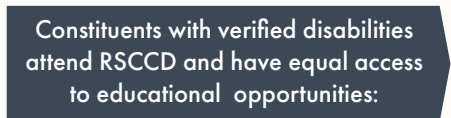
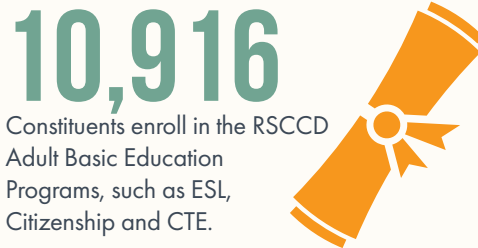
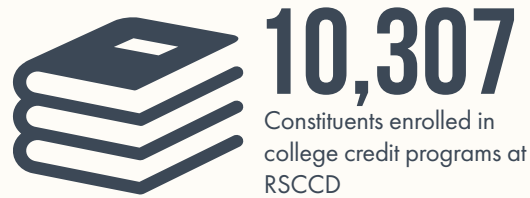
## YOUR CONSTITUENTS OUR STUDENTS

# DISTRICT 47

David Min  
 47th U.S. Congressional District

# 2023-24 DISTRICT 47

## Your Constituents, Our Students

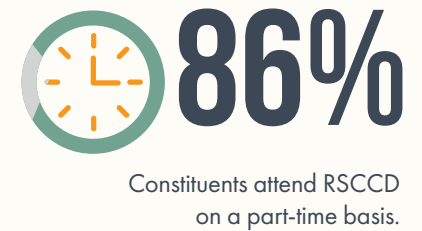
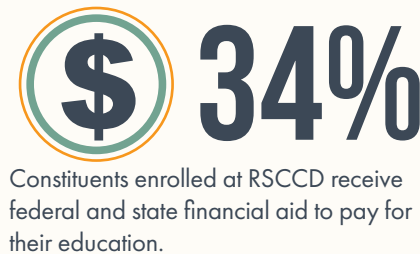


## ABOUT RSCCD

Founded nearly 50 years ago, the Rancho Santiago Community College District (RSCCD) is one of the most established and impactful community college districts in California. RSCCD serves a diverse population of over 700,000 residents across central Orange County, encompassing communities such as Santa Ana, Orange, and Anaheim Hills, which together represent about 25% of the county's total area.

RSCCD oversees two renowned institutions: Santa Ana College (SAC), one of the oldest colleges in the state, and Santiago Canyon College (SCC), one of the most innovative, located on their respective 63-acre and 82-acre campuses. Together, these institutions provide vital educational opportunities for local communities through associate degrees, transfer programs, vocational training, and continuing education. SAC, for instance, now offers three Bachelor's Degrees in Occupational Studies, Paralegal Studies, and Automotive Technology.

In addition to traditional academic programs, RSCCD operates multiple centers focused on workforce development and career training, including the Digital Media Center and the Orange County Sheriff's Regional Training Academy. With a commitment to accessibility and quality, RSCCD has positioned itself as a cornerstone for higher education and professional development in the region, offering affordable and high-quality educational programs tailored to the needs of students and the local economy.



### DIVERSE CONSTITUENTS ATTENDING RSCCD

