



Santa Ana College
Enrollment Issues Fall 2007 to Spring 2012
Compiled by RSCCD Research Department, May 2012

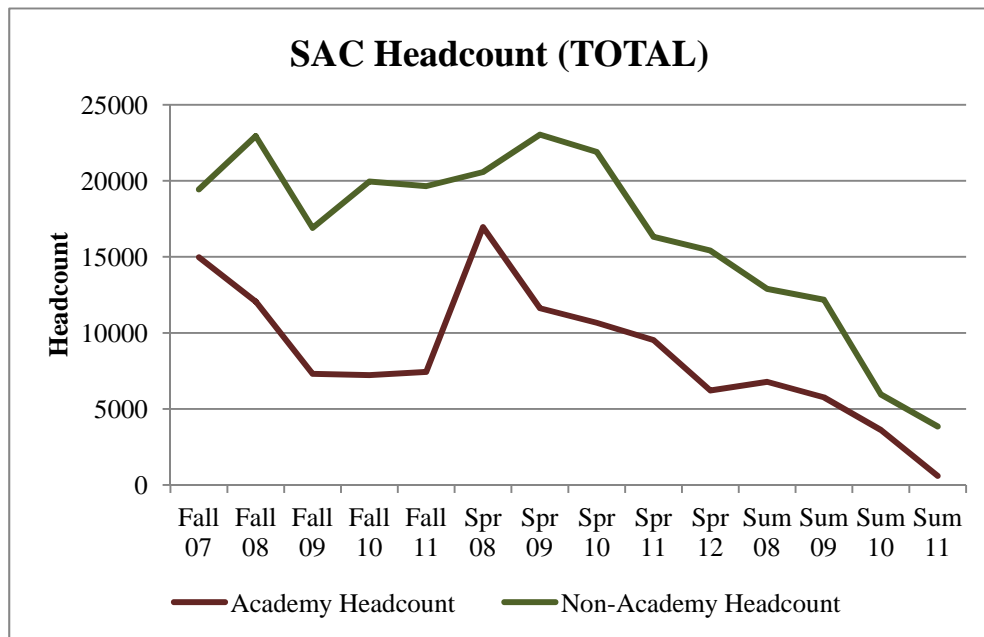
Background

In an attempt to identify enrollment trends at Santa Ana College that may be influenced by the tumultuous budget environment in the State, student records (in the credit programs) were analyzed. Headcounts and mean unit loads by ethnicity, age, and gender were included in the analyses. Generally, comparisons are made (gains or losses) from year-to-year, meaning fall-to-fall, spring-to-spring, and summer-to-summer; it is difficult to discern real change semester-to-semester due to programmatic differences that differ regardless of outside variables (budgetary and economic climate).

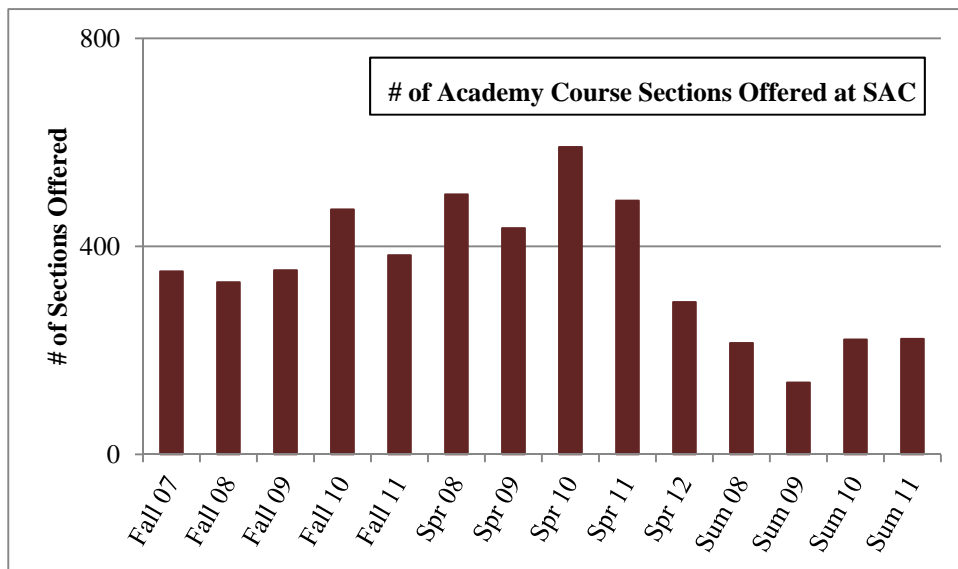
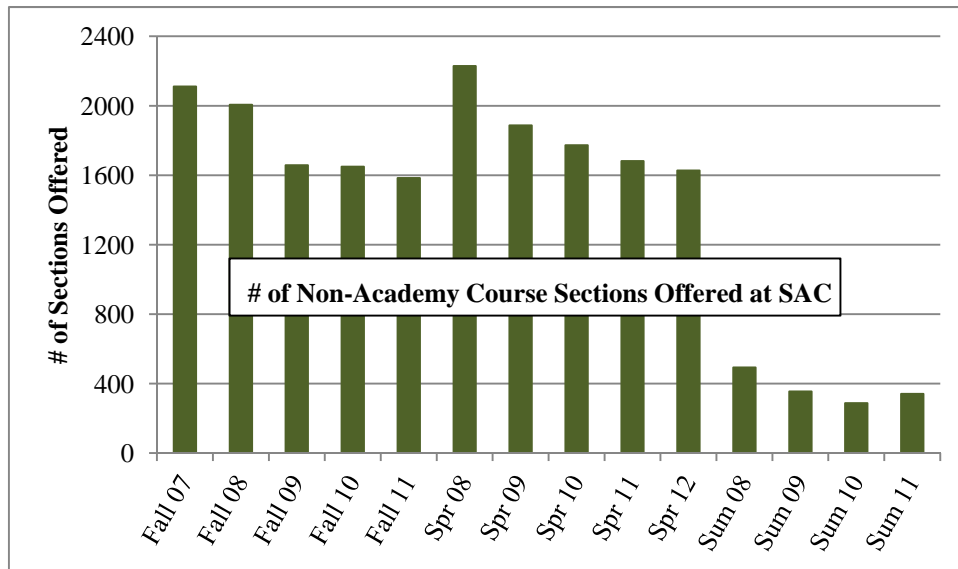
Summary of Findings

Headcount and # Course Sections Offered

- Headcount in credit coursework at SAC has declined steadily since Spring 2009 (non-academy coursework) and a year earlier (Spring 2008) for criminal justice and fire academy coursework.

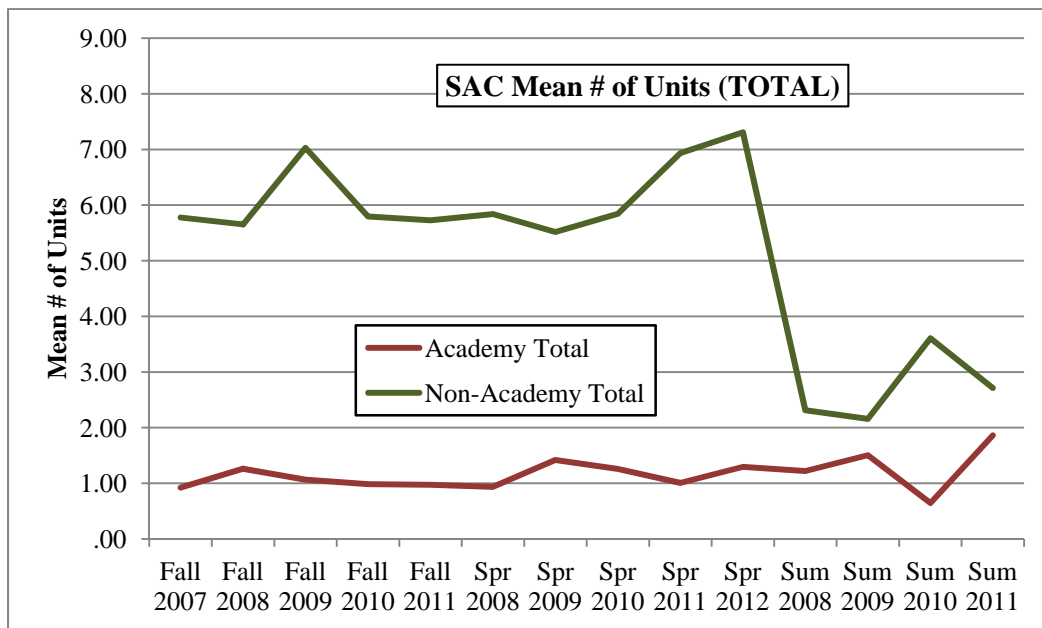


- The number of non-academy course sections offered has steadily decreased since the 2007/08 school year.
- The number of sections offered in Criminal Justice and Fire Academies vary widely; a significant dip in Summer 2009 preceded highs in Spring and Fall 2010.



Mean # of Units Enrolled

- Non-academy students, on average, after spiking to about seven units in Fall 2009, leveled out to just under six units per semester thru Fall 2011.
- On average, the number of units non-academy SAC students have enrolled in (spring semesters) has increased steadily since 2009.
- On average, non-academy students enrolled in nearly double the number of units in Summer 2010 over all other summer semesters included in this study.
- Academy students' units, on average, remain fairly constant, with the exception of a significant dip in Summer 2010, followed up the subsequent summer with a comparable increase.



Santa Ana College

Headcount by Ethnicity, Age, and Gender (FIRE AND CRIMINAL JUSTICE ACADEMIES)														
	Fall 07	Fall 08	Fall 09	Fall 10	Fall 11	Spr 08	Spr 09	Spr 10	Spr 11	Spr 12	Sum 08	Sum 09	Sum 10	Sum 11
Academy Headcount	14972	12059	7307	7226	7431	16953	11622	10665	9524	6212	6781	5759	3615	593
Ethnicity														
Black	419	386	188	154	135	493	328	248	192	140	241	147	71	9
Latino	3332	2954	1457	1324	1342	3863	2369	1881	1828	1242	1474	978	656	371
Asian	820	761	371	355	317	891	610	437	435	303	304	215	155	28
White	8348	6297	3327	3107	2782	9379	6140	4602	3805	2631	3791	2724	1189	132
other	663	532	212	171	181	794	529	321	273	177	305	203	83	20
decline/state	1390	1129	1752	2115	2674	1533	1646	3176	2991	1719	666	1492	1461	33
Age														
<20	336	247	229	128	87	267	168	216	238	100	15	45	190	88
20-25	1424	965	435	504	454	1821	977	660	586	421	515	323	242	85
26-29	1601	1357	766	861	789	1976	1424	1303	1108	716	832	647	461	70
30-39	4853	4195	2618	2518	2627	5344	3945	3787	3407	2143	2264	1964	1255	171
40+	6758	5295	3250	3210	3474	7545	5108	4688	4185	2832	3155	2780	1466	179
Gender														
female	2548	2104	1059	1017	1155	2963	2012	1599	1683	1085	832	600	494	102
male	12424	9955	6209	6186	6250	13989	9608	9045	7799	5102	5948	5152	3108	489
Headcount by Ethnicity, Age, and Gender (NON-ACADEMY SUBJECT AREAS)														
	Fall 07	Fall 08	Fall 09	Fall 10	Fall 11	Spr 08	Spr 09	Spr 10	Spr 11	Spr 12	Sum 08	Sum 09	Sum 10	Sum 11
Non-Academy Headcount	19429	22930	16905	19952	19649	20577	23039	21898	16308	15411	12895	12177	5953	3844
Ethnicity														
Black	521	486	349	390	384	501	481	418	381	352	307	233	158	32
Latino	10238	10945	9510	9679	9961	10197	10711	10061	9382	9212	5138	4672	3235	3256
Asian	2930	3024	2502	2357	2166	2920	3003	2709	2201	2105	1671	1424	972	147
White	4094	6298	2966	5485	5208	5128	6620	6408	2786	2415	4362	4470	1007	197
other	972	1145	701	749	620	1028	1194	930	586	447	699	538	244	61
decline/state	674	1032	877	1292	1310	803	1030	1372	972	880	718	840	337	151
Age														
<20	4938	5113	3694	3399	3489	4281	4341	3069	2713	3297	2505	2138	1350	826
20-25	6541	7279	6735	7092	7135	7018	7594	7869	7173	6710	3603	3527	2445	1802
26-29	1936	2335	1918	2213	2159	2153	2523	2566	2023	1724	1333	1300	708	519
30-39	2769	3507	2227	3068	3014	3180	3706	3583	2243	1918	2161	2095	767	467
40+	3245	4696	2303	4165	3852	3945	4875	4772	2156	1762	3293	3117	682	230
Gender														
female	10011	10110	8799	8507	8448	9701	9860	9246	8332	8120	4952	4514	3339	2179
male	9418	12820	8064	11395	11148	10875	13178	12602	7930	7245	7943	7649	2595	1660

Santa Ana College											
	% Change in Headcount from Prior Year (Academies)										
	Fall 2008	Fall 2009	Fall 2010	Fall 2011	Spr 2009	Spr 2010	Spr 2011	Spr 2012	Sum 2009	Sum 2010	Sum 2011
Total	-19%	-39%	-1%	3%	-31%	-8%	-11%	-35%	-15%	-37%	-84%
Ethnicity											
Black	-8%	-51%	-18%	-12%	-33%	-24%	-23%	-27%	-39%	-52%	-87%
Latino	-11%	-51%	-9%	1%	-39%	-21%	-3%	-32%	-34%	-33%	-43%
Asian	-7%	-51%	-4%	-11%	-32%	-28%	0%	-30%	-29%	-28%	-82%
White	-25%	-47%	-7%	-10%	-35%	-25%	-17%	-31%	-28%	-56%	-89%
other	-20%	-60%	-19%	6%	-33%	-39%	-15%	-35%	-33%	-59%	-76%
decline to state	-19%	55%	21%	26%	7%	93%	-6%	-43%	124%	-2%	-98%
Age											
<20	-26%	-7%	-44%	-32%	-37%	29%	10%	-58%	200%	322%	-54%
20-25	-32%	-55%	16%	-10%	-46%	-32%	-11%	-28%	-37%	-25%	-65%
26-29	-15%	-44%	12%	-8%	-28%	-8%	-15%	-35%	-22%	-29%	-85%
30-39	-14%	-38%	-4%	4%	-26%	-4%	-10%	-37%	-13%	-36%	-86%
40+	-22%	-39%	-1%	8%	-32%	-8%	-11%	-32%	-12%	-47%	-88%
Gender											
female	-17%	-50%	-4%	14%	-32%	-21%	5%	-36%	-28%	-18%	-79%
male	-20%	-38%	0%	1%	-31%	-6%	-14%	-35%	-13%	-40%	-84%
	% Change in Headcount from Prior Year (Non-Academies)										
	Fall 2008	Fall 2009	Fall 2010	Fall 2011	Spr 2009	Spr 2010	Spr 2011	Spr 2012	Sum 2009	Sum 2010	Sum 2011
Total	18%	-26%	18%	-2%	12%	-5%	-26%	-6%	-6%	-51%	-35%
Ethnicity											
Black	-7%	-28%	12%	-2%	-4%	-13%	-9%	-8%	-24%	-32%	-80%
Latino	7%	-13%	2%	3%	5%	-6%	-7%	-2%	-9%	-31%	1%
Asian	3%	-17%	-6%	-8%	3%	-10%	-19%	-4%	-15%	-32%	-85%
White	54%	-53%	85%	-5%	29%	-3%	-57%	-13%	2%	-77%	-80%
other	18%	-39%	7%	-17%	16%	-22%	-37%	-24%	-23%	-55%	-75%
decline to state	53%	-15%	47%	1%	28%	33%	-29%	-9%	17%	-60%	-55%
Age											
<20	4%	-28%	-8%	3%	1%	-29%	-12%	22%	-15%	-37%	-39%
20-25	11%	-7%	5%	1%	8%	4%	-9%	-6%	-2%	-31%	-26%
26-29	21%	-18%	15%	-2%	17%	2%	-21%	-15%	-2%	-46%	-27%
30-39	27%	-36%	38%	-2%	17%	-3%	-37%	-14%	-3%	-63%	-39%
40+	45%	-51%	81%	-8%	24%	-2%	-55%	-18%	-5%	-78%	-66%
Gender											
female	1%	-13%	-3%	-1%	2%	-6%	-10%	-3%	-9%	-26%	-35%
male	36%	-37%	41%	-2%	21%	-4%	-37%	-9%	-4%	-66%	-36%

Santa Ana College Course Sections Offered, by Subject Area and by Semester

	Fall Semesters						Spring Semesters						Summer Semesters			
	2007	2008	2009	2010	2011		2008	2009	2010	2011	2012		2008	2009	2010	2011
ACCOUNTING	41	39	32	25	25		41	33	32	26	26		5	3	3	3
ANTHROPOLOGY	17	16	13	14	14		19	16	14	14	13		4	4	4	5
ART	124	121	101	87	79		130	117	97	84	79		27	17	9	9
ASIAN STUDIES	0	1	1	0	0		0	1	1	1	1		0	0	0	0
ASTRONOMY	6	6	6	6	5		7	6	6	6	6		1	1	1	1
AUTOMOTIVE	19	17	17	13	14		22	17	16	14	13		7	6	4	5
BANKING	2	2	2	2	2		2	2	2	2	2		0	0	0	0
BIOLOGY	54	51	47	48	43		58	48	48	51	49		10	7	8	8
BLACK STUDIES	1	1	0	0	0		1	0	0	0	0		0	0	0	0
BUSINESS	45	41	40	36	38		48	38	40	40	40		9	8	8	9
BUSINESS APPLICATIONS	73	53	30	34	35		68	40	35	39	42		14	6	6	5
BUSINESS SEMINAR	90	78	31	54	41		79	78	43	35	45		0	0	0	0
CATERING	1	1	0	0	0		2	1	0	0	0		0	0	0	0
CHEMISTRY	19	19	16	16	17		20	17	17	17	17		5	4	4	4
CHICANO STUDIES	5	5	4	4	3		5	4	4	4	3		0	0	0	0
COMMUNICATION & MEDIA STUDIES	0	0	0	5	5		0	0	0	10	10		0	0	0	1
COMPUTER SCIENCE	42	37	32	32	31		41	32	33	34	31		4	3	3	3
COUNSELING	70	66	47	46	48		67	46	45	42	41		20	8	3	6
CRIMINAL JUSTICE	29	31	27	25	26		35	31	26	25	26		2	1	2	3
CRIMINAL JUSTICE ACAD	224	235	306	415	338		352	313	507	415	233		155	93	206	211
DANCE	55	53	41	39	33		50	45	41	39	31		7	5	5	5
DIESEL	18	16	6	5	5		20	12	7	6	6		5	1	1	1
EARTH SCIENCE	9	9	8	9	7		11	10	8	8	8		2	2	1	3
ECONOMICS	13	14	11	11	9		16	14	14	12	11		4	3	3	4
EDUC	1	2	4	4	4		3	1	1	1	2		0	0	0	0
EMERG MED TECH	4	4	3	3	4		4	3	4	4	3		2	2	2	2
ENGINEERING	40	36	32	23	29		42	34	26	23	36		13	5	4	4
ENGLISH	102	102	95	96	94		106	92	94	96	102		25	19	19	24
ENGLISH AS A SECOND LANG	9	9	8	8	8		11	10	9	9	8		6	2	2	1
EMLS	35	33	28	29	23		35	30	27	27	22		10	7	5	5
ENTREPRENEURSHI	0	0	0	6	8		0	0	0	6	6		0	0	0	1
ENVIRONMENTAL STUDIES	3	2	2	2	1		1	0	1	1	1		0	0	0	0
ETHNIC STUDIES	2	2	2	2	2		3	2	2	2	2		0	0	0	0
EXERCISE ACTIVITIES	23	17	16	9	8		28	20	18	16	24		14	13	9	10
EXERCISE ADAPTED	4	4	3	3	6		4	3	3	3	5		1	1	1	1
EXERCISE AEROBIC FITNESS	19	16	11	8	7		18	14	14	12	7		9	5	5	5
EXERCISE AQUATICS	10	10	8	4	4		12	8	6	4	4		4	2	1	3
EXERCISE FITNESS	21	19	17	15	13		26	20	18	18	15		8	2	2	2

Santa Ana College Course Sections Offered, by Subject Area and by Semester

	Fall Semesters						Spring Semesters						Summer Semesters			
	2007	2008	2009	2010	2011		2008	2009	2010	2011	2012		2008	2009	2010	2011
EXERCISE HEALTH	14	14	12	15	15		15	13	15	13	16		3	4	6	7
EXERCISE INTERMURAL ATHLETICS	28	27	23	22	19		30	20	14	15	6		6	5	0	0
EXERCISE OFF SEASON	6	6	0	0	0		8	7	0	0	0		6	0	0	0
EXERCISE OFF SEASON	0	0	4	2	0		0	0	7	7	0		0	5	6	7
EXERCISE SPORTS MEDICINE	2	2	2	2	0		2	2	2	2	2		0	0	0	0
FASHION DESIGN MERCHANDISING	20	18	9	11	16		23	23	14	16	14		1	1	0	0
FIRE ACADEMY	128	96	48	56	45		148	122	84	73	60		59	45	15	11
FIRE OFFICER TRAINING	12	10	25	21	14		16	42	52	43	16		2	9	12	11
FIRE PUBLIC SAFETY	19	33	0	36	36		40	34	64	0	0		33	34	0	29
FIRE TECHNOLOGY	39	38	33	32	32		38	34	32	32	29		2	1	1	1
FRENCH	11	9	9	9	9		12	10	10	10	10		0	0	0	0
GEOGRAPHY	11	12	9	9	9		13	10	10	9	9		2	0	1	2
GEOLOGY	10	9	9	8	8		9	6	8	8	7		4	2	2	3
HISTORY	41	40	33	33	33		45	39	39	40	39		10	6	6	7
HUMAN DEVELOPMENT	34	30	26	29	31		41	36	35	37	35		10	8	7	7
INTERDISCIPLINARY STUDIES	9	10	7	6	6		11	8	5	5	5		3	1	2	1
JAPANESE	3	3	2	0	0		4	4	2	0	0		0	0	0	0
JOURNALISM	11	11	11	0	0		11	11	11	0	0		2	2	1	0
LIBRARY STUDIES	3	3	2	2	2		3	3	2	2	2		0	0	0	0
LIBRARY TECHNOLOGY	4	3	3	4	3		3	4	3	3	4		0	0	0	0
MANAGEMENT	13	13	11	5	4		11	10	4	5	4		6	3	1	2
MANUFACTURING TECHNOLOGY	40	39	34	38	42		36	36	36	46	55		4	4	2	2
MARKETING	5	5	3	3	3		4	4	3	3	3		1	1	0	0
MATH	139	149	141	141	142		158	142	153	150	146		35	27	32	33
MEDICAL ASSISTANT	11	11	9	8	9		11	8	10	9	9		1	0	0	1
MUSIC	111	105	92	83	77		112	101	91	87	85		20	13	12	10
NURSING RN	44	41	40	39	36		43	40	39	35	38		15	2	2	2
NURSING-- CONT ED	1	0	0	0	0		2	2	1	0	0		2	2	1	0
NUTRITION	8	8	5	5	5		9	8	5	5	6		1	1	1	1
OCCUPATIONAL THERAPY ASSIST	12	11	11	12	12		11	11	11	12	13		0	0	0	0
PARALEGAL	24	22	24	24	20		19	17	19	18	19		4	4	4	4
PHARMACY	18	17	17	21	20		18	17	18	18	19		7	6	7	7
PHILOSOPHY	20	20	13	13	13		27	21	16	16	16		6	6	3	3
PHOTOGRAPHY	11	10	8	10	7		15	10	10	11	7		2	2	2	2
PHYSICAL SCIENCE	3	3	3	3	3		3	2	2	2	2		3	2	2	2
PHYSICS	11	10	7	7	7		8	9	8	8	8		3	2	2	2

Santa Ana College Course Sections Offered, by Subject Area and by Semester																
	Fall Semesters						Spring Semesters						Summer Semesters			
	2007	2008	2009	2010	2011		2008	2009	2010	2011	2012		2008	2009	2010	2011
POLITICAL SCIENCE	23	23	22	22	22		26	22	21	22	21		6	7	6	7
PSYCHOLOGY	27	28	27	27	27		24	22	22	22	22		6	6	5	5
READING	67	46	45	44	41		66	39	42	42	38		9	6	6	6
SBSM	7	7	0	0	0		7	0	0	0	0		0	0	0	0
SCIENCE	2	3	3	3	2		3	1	2	2	2		1	0	2	2
SIGN LANGUAGE	9	10	8	8	8		8	7	7	7	8		2	2	2	2
SOCIAL SCIENCE	8	7	8	8	8		10	9	7	9	9		2	2	2	0
SOCIOLOGY	14	16	14	13	11		20	15	14	16	11		6	6	4	7
SPANISH	23	21	15	16	16		28	21	21	22	21		6	4	3	4
SPECIAL SERVICES	26	17	13	5	7		31	18	10	6	7		8	5	2	2
SPEECH	76	67	53	47	43		79	60	56	59	57		18	13	12	11
SPEECH & LANGUAGE PATHOLOGY	0	10	8	8	8		0	8	8	8	9		0	0	0	0
STUDY SKILLS	14	16	11	12	9		14	12	9	9	8		4	2	1	1
THEATRE ARTS	16	18	14	17	15		21	23	13	14	11		4	4	4	4
TV VIDEO COMM	22	20	16	17	15		25	19	17	22	19		5	4	5	5
VIETNAMESE	4	5	5	5	4		5	5	3	3	3		0	0	0	0
WELDING	11	11	12	15	15		10	12	13	15	13		3	3	3	5
WOMEN'S STUDIES	2	2	2	2	2		2	2	2	2	2		0	0	0	0
Total # of Sections Offered	2463	2337	2012	2120	1967		2729	2322	2364	2170	1920		707	493	509	563
Total # Academy Sections	352	331	354	471	383		500	435	591	488	293		214	138	221	222
Total # Non-Academy Sections	2111	2006	1658	1649	1584		2229	1887	1773	1682	1627		493	355	288	341

Santa Ana College														
Mean Unit Load of Academy Students by Ethnicity, Age, and Gender														
	Fall 2007	Fall 2008	Fall 2009	Fall 2010	Fall 2011	Spr 2008	Spr 2009	Spr 2010	Spr 2011	Spr 2012	Sum 2008	Sum 2009	Sum 2010	Sum 2011
Academy Total	.92	1.26	1.06	.99	.97	.94	1.42	1.26	1.01	1.30	1.22	1.50	.65	1.86
Ethnicity														
Black	1.46	1.21	1.11	1.20	1.18	.96	1.41	1.18	.81	1.47	1.31	1.67	1.08	.46
Latino	1.03	1.32	1.35	1.27	1.17	1.08	1.49	1.45	1.28	1.78	1.53	1.70	1.00	2.17
Asian	1.06	1.24	1.21	1.16	1.14	1.12	1.12	1.51	1.00	1.25	1.49	1.48	.82	3.25
White	.90	1.27	1.16	1.16	1.21	.92	1.54	1.64	1.32	1.49	1.14	1.76	.77	.97
other	.97	1.30	1.59	.96	1.00	.92	1.42	1.35	1.13	1.31	1.24	1.70	.75	1.38
decline to state	.54	1.05	.54	.50	.60	.55	.96	.56	.45	.64	.83	.88	.34	1.44
Age														
<20	2.24	3.65	2.14	3.17	3.01	3.06	2.18	1.72	1.84	3.42	6.93	.75	1.16	.930
20-25	3.22	3.46	4.45	3.54	3.68	2.65	2.97	3.15	3.29	5.45	4.41	2.74	1.45	5.932
26-29	1.49	1.73	1.69	1.32	1.50	1.33	1.58	1.34	1.22	2.02	1.87	1.49	.82	2.516
30-39	.69	.97	.80	.77	.77	.78	1.25	1.09	.82	.94	.99	1.46	.56	1.613
40+	.40	.86	.60	.57	.60	.46	1.18	1.08	.74	.69	.67	1.41	.46	.363
Gender														
female	.73	.79	.71	.84	.72	.66	.80	.73	.76	.85	.92	1.42	.43	1.92
male	.96	1.36	1.12	1.01	1.02	.99	1.55	1.35	1.06	1.38	1.26	1.52	.68	1.85

Santa Ana College														
Mean Unit Load of Non-Academy Students by Ethnicity, Age, and Gender														
	Fall 2007	Fall 2008	Fall 2009	Fall 2010	Fall 2011	Spr 2008	Spr 2009	Spr 2010	Spr 2011	Spr 2012	Sum 2008	Sum 2009	Sum 2010	Sum 2011
Total	5.78	5.65	7.03	5.80	5.73	5.84	5.52	5.85	6.94	7.31	2.31	2.16	3.61	2.71
Ethnicity														
Black	5.31	6.20	7.12	6.24	6.47	5.48	5.81	6.11	6.45	6.83	2.79	2.75	3.62	2.02
Latino	5.95	6.16	6.97	6.67	6.62	6.29	6.14	6.61	6.90	7.20	2.96	2.83	3.60	2.72
Asian	6.94	7.28	7.99	7.44	7.14	7.43	7.31	7.49	7.83	7.87	3.37	3.13	3.82	2.91
White	4.77	4.21	6.44	3.58	3.44	4.27	3.94	4.09	6.41	7.08	1.25	1.19	3.47	2.51
other	5.93	5.75	7.16	5.80	5.30	6.00	5.54	5.97	6.80	7.19	2.39	2.25	3.52	2.95
decline to state	4.39	3.96	6.78	5.57	5.66	4.34	3.80	5.05	6.99	8.02	1.43	1.66	3.53	2.68
Age														
<20	7.93	8.19	8.66	8.50	8.20	8.08	7.79	8.01	8.25	8.32	3.36	2.98	3.71	3.05
20-25	6.43	6.62	7.72	7.33	7.17	7.08	6.69	7.27	7.71	7.91	3.17	2.83	3.90	2.80
26-29	4.95	4.95	6.20	5.41	5.22	5.15	5.07	5.44	6.23	6.57	2.34	2.18	3.56	2.53
30-39	4.12	4.08	5.50	3.96	3.97	4.21	4.11	4.51	5.55	6.01	1.72	1.79	3.24	2.30
40+	3.11	2.91	4.58	2.55	2.47	2.89	2.97	3.35	4.79	5.28	.96	1.06	2.83	2.12
Gender														
female	5.93	6.35	7.04	6.95	6.91	6.51	6.38	6.71	7.05	7.28	3.26	2.92	3.55	2.74
male	5.62	5.10	7.03	4.95	4.83	5.24	4.87	5.22	6.83	7.35	1.73	1.70	3.68	2.67