

English as a Second Language (ESL) Noncredit Student – Guided Pathways

Communication/Academic Pathway (Option A)

ESL for Career Pathways (Option B)

GOAL

Learn English to enhance communication skills within American culture and prepare for career and/or higher education.

GOAL

Learn English to enter the workforce and explore career options.



Start Educational Plan with a Counselor and Develop Foundation Skills

- ESL 300 Literacy
- ESL 301 Beginning Low*
- ESL 302 Beginning High*

- ESL 510 ESL: English for Work 1
(Recommended for *Beginning Levels)



ESL Support Classes:

Conversation, ESL for Citizenship, ESL Lab, Pronunciation, Writing

Clarify the Path • Enter the Path • Stay on the Path • Ensure Learning*



*Students should meet with a counselor to transition from one pathway to another.

- ESL 303 Intermediate Low
- ESL 304 Intermediate High
- ESL 305 Advanced Low
- ESL 306 Advanced High

- ESL 520 ESL: English for Work 2
(Recommended for Intermediate to Advanced Levels)

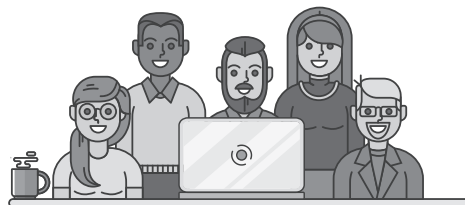


ESL Support Classes:

Conversation, ESL for Citizenship, ESL Lab, Pronunciation, Writing

Next Steps and Concurrent Options

- Adult Basic Education
- Career Education
- Citizenship
- GED/HiSET
- High School Subjects
- Introduction to College Writing (Composition 2)
- Leadership Training
- Transition to College



Integrated Education and Training Programs

- Career Education Certificate Programs leading to:
- Careers
 - Internships
 - On-the-Job Training
 - Specialized Schools and Training



ESL Pathways to Your Future Success!

We're here to help! Continue and review your Educational Plan with a counselor: