

# STUDENT-FIRST FACILITIES NEEDS

@ CENTENNIAL EDUCATION CENTER



# HISTORY & CURRENT CONFIGURATION

In 1980, bungalows were installed at Centennial Park at what is now known as Centennial Education Center. In 2019, an 85-year lease was granted by Santa Ana.

## SITE CONFIGURATION

- 2 acres of land
- 7 one-story buildings
- 28 classrooms & 3 Student labs
- Child Development Center
- Outdoor quad with Vending Machines
- Two public restroom facilities



# SITE USAGE

2000

# of students on campus  
each week!

125

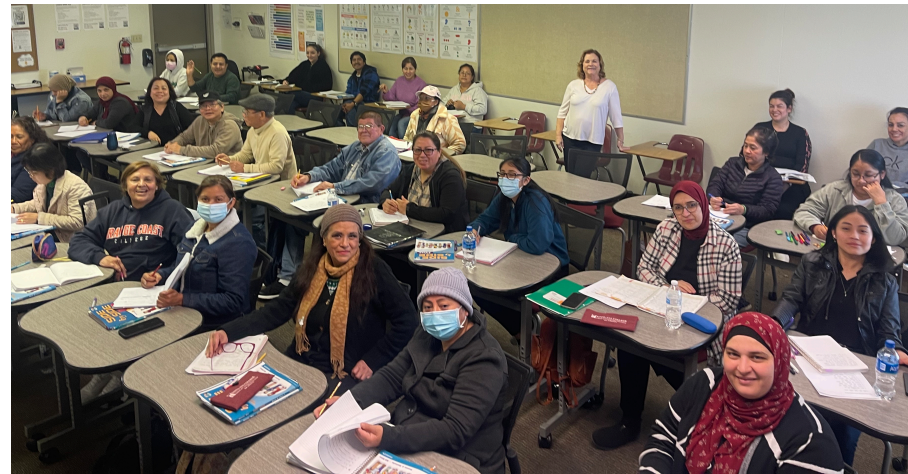
# of classes currently  
taught at at CEC

65

# of classified staff working  
on campus

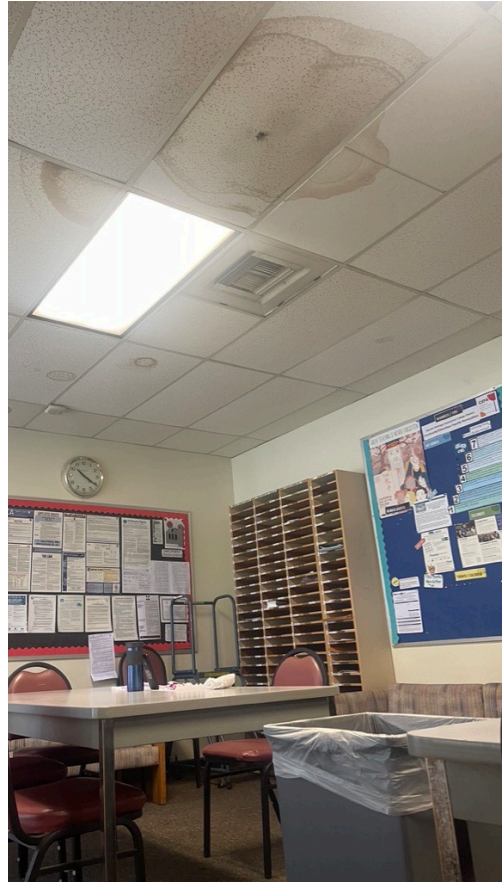
60

# of faculty teaching on  
campus



# FACILITY ISSUES – LAST TWO MONTHS

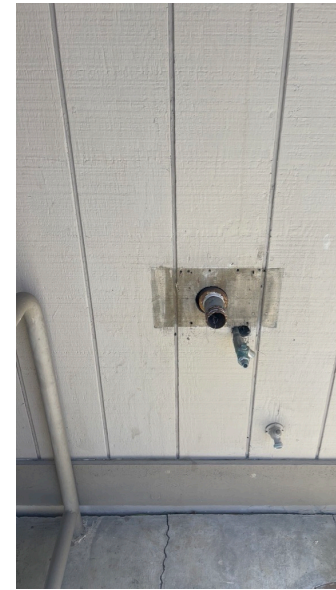
---



# ADDITIONAL CONCERNS

---

- Small student service centers lead to long lines outside buildings
- No dedicated indoor space for students to study or meet outside of class
- One working water fountain on campus
- Heating/Cooling system malfunctions lead to uncomfortable classroom environments



# ONGOING FACILITY ISSUES

---

- Significant exterior deterioration
- Water intrusion including ceiling leaks and flooding
- Uneven and cracked cement flooring throughout center
- Animal & insect infestations due to rotted building foundations
- Poor lighting throughout campus and parking lot
- Poorly maintained landscaping



# POTENTIAL SITE ENHANCEMENTS

- Replace roofing on all site buildings
- Paint throughout site, both interior and exterior walls
- Update flooring throughout site
- Improve lighting on campus, in parking lots, and along paths to public transportation
- Designate indoor student spaces where people can gather and study
- Update furnishings throughout site
- Update student-serving offices to better accommodate students



# RECOMMENDATIONS

---

- Secure funding for Center Updates through District Deferred Maintenance Funds & Continuing Ed Growth  
Cost: **\$5,000,000** (for immediate repairs needed)
- Hire two full time custodians to work at Centennial Education Center.  
Cost:  $\$87,278 \times 2 = \mathbf{\$174,556}$
- Develop Permanent Plan for Renovation of the Site  
Cost: TBA

Continuing Education's net revenue has increased 51% since the 2017/2018 academic year. Santa Ana College general fund expenses have increased 15% since 2017. Continuing Education is projected to grow an additional 15% in 2022/2023. Growth funds can cover costs for site improvement and Continuing Education Reorganization Plan including two full time custodians.

	2017/2018	2018/2019	2019/2020	2020/2021	2021/2022
General Expenses	\$11,718,745	\$11,620,121	\$12,097,991	\$11,133,531	\$12,205,513
Total Revenue	\$23,843,310	\$23,340,673	\$23,112,144	\$24,642,339	\$28,762,653
Total Net Revenue	\$6,635,454	\$6,890,900	\$7,052,995	\$7,471,074	\$10,040,122