

*Rancho Santiago
Community College District*

2026-2030
Five Year Construction Plan
(2026-2027 First Funding Year)

July 1, 2024

FY2026 - FY2030 FIVE YEAR CAPITAL OUTLAY PLAN
(FY2026 - 2027) FIRST YEAR FUNDING

Rancho Santiago Community College District

Prepared in reference to the Community College Construction Act of 1980
and
approved on behalf of the local governing board for submission to
the office of the Chancellor, California Community Colleges

Signed _____
Marvin Martinez
(Chief Executive Officer or their designee)
Title _____ Chancellor
Date _____ 05/13/2024
Contact _____ Carri Matsumoto
Telephone _____ 714-480-7510

Date Received at Chancellor's Office:

Chancellor's Office Reviewed by:

Notice of Approval

FUSION

Inventory of Land

Planning

Rancho Santiago Community College District (870)

List the address and acreage of every land unit owned by the district (Education Code 81821 ((b)3)). Please identify all locations, both on-campus and off-campus, grouped according to their "parent" institution. In the event the list is long or complicated, please substitute copies of college bulletins or other notices to the public which display similar information. The list should be current as of October the prior year.

Address	Acres
Digital Media Center 1300 S. Bristol Santa Ana, CA	1.21
O.C. Sheriff's Regional Training Academy 15991 Armstrong Avenue Tustin, CA 92782	15
Orange Education Center 1465 N. Batavia Orange, CA 92867	6.4
Rancho Santiago Center 2323 N. Broadway Santa Ana, CA 92706	3.5
Santa Ana College 1530 West 17th Street Santa Ana, CA 92706	75
Santiago Canyon College 8045 E. Chapman Avenue Orange, CA 92869	82.77
Total Acreage:	183.88

Legislative Districts

Campus	Assembly	Senate	House
Santa Ana College	68	34	46
Rancho Santiago District Office*	68	34	46
Santiago Canyon College	59	37	40
Orange Education Center	68	37	46
Centennial Education Center	68	34	46

FUSION

Instructional Delivery Load

Planning

Rancho Santiago Community College District (870)

Address

4th Street Market

201 East 4th Street
Santa Ana, CA 92701

Acacia Adult Day Services

11391 Acacia Pky
Garden Grove, CA 92840

ActivCare Memory Care

2629 E Chapman Ave
Orange, CA 92869

Adams Elementary School

2130 S. Raitt St.
Santa Ana, CA 92704

Adlerhorst International

3951 Vernon Ave
Riverside, CA 92509

Advanced Learning Academy Early College

1325 E 4th St.
Santa Ana, CA 92701

Advanced Rehab of Tustin

2210 E. First St
Santa Ana, CA 92705

Alhambra Fire Dept

301 N First Street
Alhambra, CA 91801

Anaheim Fire

2400 East Orangewood
Anaheim, CA 92806

Anaheim Regional Medical Center

1111 W La Palma
Anaheim, CA 92801

Arcadia Fire Dept

240 W. Huntington Drive
Arcadia, CA 91007

Boys and Girls Club

950 W. Highland St.
Santa Ana, CA 92703

Brea Fire

1 Civic Center Circle
Brea, CA 92821

Brookdale Anaheim Hills

380 S. Anaheim Hills Rd
Anaheim Hills, CA 92807

Buena Clinton Youth and Family Center

12661 Sunswept Ave.
Garden Grove, CA 92843

Burbank Fire

301 E. Olive Ave
Burbank, CA 91510-6459

Cal Narcotics Officers Association

28245 Avenue Crocker, Suite 230
Valencia, CA 91355

California Association for Property and Evidence

PO Box 6675
Salinas, CA 93912

California/Nevada Training Trust

9846 Limestone Ave.
Riverside, CA 92509

Cambridge Elementary School

425 N. Cambridge
Orange, CA 92866

Cambridge Elementary School

425 S Sullivan
Santa Ana, CA 92704

Canyon High School

220 S. Imperial Hwy.
Anaheim, CA 92807

Carehouse Convalescent Hospital

1800 Old Tustin Avenue
Santa Ana, CA 92706

Carlsbad Fire Dept

2560 Orion Way
Carlsbad, CA 92010

Carr Intermediate School

2120 W. Edinger Ave.
Santa Ana, CA 92704

Carver Elementary School

1401 W. Santa Ana Blvd.
Santa Ana, 92703

Casa Teresa

123 W. Maple
Orange, CA 92866

Central Jail Men's

550 North Flower Street
Santa Ana, CA 92703

Central Jail Women's

550 N. Flower St.
Santa Ana, CA 92703

Century High School

1401 S. Grand Ave.

Santa Ana, CA 92705

Chapman Avenue Site/OEC Provisional Ed. Facility

1937 West Chapman Avenue

Orange, CA 92868

CHOC

1201 W La Veta Ave

Orange, CA 92867

Chula Vista Fire

447 F Street

Chula Vista, CA 91910

Church of Jesus Christ of Latter Day Saints

3401 S.Greenvill

Santa Ana, CA 92704

Citrus Hill Assisted Living

142 South Prospect Avenue

Orange, CA 92869

College and Workforce Preparation Center

1572 N. Main Street

Orange, CA 92867

Community Garden Towers

4001 West Garden Grove Blvd.

Orange, CA 92868

Corona Fire Dept

400 South Vicientia Ave

Corona, CA 92882

Corona Police Dept

730 Corporation Yard Way

Corona, CA 92882

Costa Mesa Fire

77 Fair Drive

Costa Mesa, CA 92626

Costa Mesa Police Dept.

99 Fair Drive

Costa Mesa, CA 92626

Country Villa Plaza

1209 Hemlock Way

Santa Ana, CA 92707

Crescent Landing at Santa Ana

3730 S. Greenville St.

Santa Ana, CA 92704

Criminal Justice Training Center

15991 Armstrong Ave.

Tustin, CA 92782

Davis Elementary School

1405 French Street

Santa Ana, CA 92701

Delhi Community Center

505 E. Central Ave.
Santa Ana, CA 92707

Diamond Elementary School

1450 S. Center Street
Santa Ana, CA 92704

Digital Media Center

1300 S. Bristol
Santa Ana, CA

Disneyland Resort

1313 Disneyland Drive
Anaheim, CA 92802

Downey Fire

12222 Paramount Blvd.
Downey, CA 90241

East Anaheim Community Center

8201 East Santa Ana Canyon Rd.
Anaheim, CA 92808

Edison Elementary School

2063 Orange
Santa Ana, CA 92707

El Modena Community Center

18672 Center Street
Orange, CA 92869

El Modena High School

3920 Spring
Orange, CA

El Sol Academy

1010 N Broadway
Santa Ana, CA 92701

Esqueda Elementary School

2240 S. Main St.
Santa Ana, CA 92707

Fairhaven Elementary School

1415 Fairhaven Ave
Santa Ana, CA 92705

Finishing Trades Institute

7020 E Slauson Ave
Commerce, CA 90040

Food 4 Thought - Central Kitchen

1749 E. Carnegie Ave
Santa Ana, CA 92705

Fountain Senior Assisted Living

1800 West Culver Avenue
Orange, CA 92868

Fountain Valley Fire

10200 Slater Avenue
Fountain Valley, CA 92708

Fountain Valley Reg Med Center

17100 Euclid Street
Fountain Valley, CA 92708

Franklin Elementary School

210 W. Cubbon
Santa Ana, CA 92705

Fremont ES

1930 W. Tenth
Santa Ana, CA 92704

French Park

600 E. Washington
Santa Ana, CA 92701

Friendly Center - Lemon Street

615-A Lemon Street
Orange, CA 92867

Fullerton Fire

312 East Commonwealth
Fullerton, CA 92832

Fullerton Police Dept

237 W Commonwealth Ave
Fullerton, CA 92832

Garden Gove High School

11271 Stanford Ave
Garden Gove, CA 92840

Garden Grove Fire Dept

11301 Acacia Pkwy
Garden Grove, CA 92840

Garden Grove Hospital

1601 Garden Grove Blvd, Suite 624
Garden Grove, CA 92843

Garfield Community Center

501 N. Lacy St.
Santa Ana, CA 92701

Garfield Elementary School

850 Brown St
Santa Ana, CA 92701

Glendale Fire

421 Oak Street
Glendale, CA 91204-1206

Godinez Fundamental High School

3002 Centennial Road
Santa Ana, CA 92704

H Louis Lake Senior Center

11300 Stanford Ave
Garden Grove, CA 92840

Handy Elementary School

860 N. Handy St.

Orange, CA 92867

Heninger Elementary

417 West Walnut St

Santa Ana, CA 92701

Heroes Elementary School

1111 W Civic Center Driv

Santa Ana, CA 92703

Hoag Memorial Hospital Presbyterian

One Hoag Drive

Newport Beach, CA 92658

Hobby Lobby

1975 E 17th Street

Santa Ana, CA 92705

Hollybrook Senior Living

2025 N. Bush St.

Santa Ana, CA 92706

Hope Builders/Taller San Jose

801 N. Broadway

Santa Ana, CA 92701

Huntington Beach Fire

2000 Main Street

Huntington Beach, CA 92648

Huntington Beach Lifeguards

103 Pacific Coast Hwy

Huntington Beach, CA 926

Immaculate Heart of Mary's School

1100 S. Center Street

Santa Ana, CA 92704

Ivy Park

12291 South Newport Ave

Santa Ana, CA 92705

Jackson Elementary School

1143 South Nakoma Dr

Santa Ana, CA 92704

James Musick Security Facility

13502 Musick

Irvine, CA 92618

Jefferson Elementary School

1522 W. Adams

Santa Ana, CA 92704

Jerome Center

726 S Center St

Santa Ana, CA 92704

Joint Powers Training Central Net

18301 Gothard

Huntington Beach, CA 92648

Joint Powers Training North Net

2400 Orangewood
Anaheim, CA 92806

Jones Board and Care

1211 W. Walnut Avenue
Orange, CA 92868

JTS Services

1905 E. 17th St., #316
Santa Ana, CA 92705

Kaiser Hospital – Anaheim

3440 E. La Palma
Anaheim, CA 92806

Kaiser Hospital – Irvine

6640 Alton Parkway
Irvine, CA 92618

Kennedy Elementary School

1300 E. Mc Fadden
Santa Ana, CA 92705

Kindred Healthcare Center

1901 College Ave
Santa Ana, CA 92706

King Elementary School

1001 South Graham Lane
Santa Ana, CA 92703

La Verne Fire

2061 Third Street
La Verne, CA 91750

Laborers Training Schools

1385 W Sierra Madre Ave
Asuza, CA 91702

Laguna Beach Fire

505 Forest Avenue
Laguna Beach, CA 92651

Laguna Beach Lifeguards

505 Forest Ave
Laguna Beach, CA 92651

Lakeside Fire

12216 Lakeside Ave
Lakeside, CA 92040

Lampson Elementary School

13321 Lampson Ave.
Garden Grove, CA 92840

Lathrop Intermediate School

1111 S. Broadway
Santa Ana, CA 92707

Latino Health Access

450 W Fourth Street
Santa Ana, CA 92701

Lincoln Education Center

11262 Garden Grove Blvd.
Garden Grove, CA 92843

Lincoln Elementary School

425 S. Sullivan
Santa Ana, CA 92704

Long Beach Fire

3205 Lakewood Blvd
Long Beach, CA 90808

Lorin Griset Academy

1629 S Center
Santa Ana, CA 92704

Lowell Elementary School

700 S Flower St
Santa Ana, CA 92703

Madison Elementary School

1124 E. Hobart
Santa Ana, CA 92707

Magnolia Science Academy

2840 W 1st Street
Santa Ana, CA 92703

Mainplace Senior Living

1800 W Culver Dr
Orange, CA 92868

Martin Elementary School

939 W. Wilshire
Santa Ana, CA 92707

Mater Dei High School

1202 W Edinger Ave.
Santa Ana, CA 92707

Mc Fadden Intermediate School

2701 S. Raitt
Santa Ana, CA 92704

Meals on Wheels

1101 S. Grand Avenue
Santa Ana, CA 92705

Meals on Wheels

1101 S Grand Ave, Ste K
Santa Ana, CA 92705

Mendez Fundamental Inter. Sch.

2000 N. Bristol St.
Santa Ana, CA 92706

Metropolitan Water District

33752 Newport Rd.
Winchester, CA 92596

Mission Hospital

27700 Medical Center Road

Mission Viejo, CA 92691

Monroe Elementary School

417 East Central Ave

Santa Ana, CA 92707

Monrovia Fire Station 101

141 East Lemon Avenue

Monrovia, CA 91016

Monte Vista Elementary School

1720W Monte Vista Ave.

Santa Ana, CA 92703

Montebello Fire

600 North Montebello Blvd.

Montebello, CA 90640

Muir Elementary School

1951 N. Mabury Street

Santa Ana, CA 92705

Murrieta Fire

41825 Juniper Street

Murrieta, CA 92562

Newport Beach Fire

100 Civic Center Drive

Newport Beach, CA 92660

O.C. Children's Therap. Arts

2215 N. Broadway

Santa Ana, CA 92701

O.C. Sheriff's Regional Training Academy

15991 Armstrong Avenue

Tustin, CA 92782

Oakmont of Orange

630 The City Drive

Orange, CA 92868

OC Educational Arts Academy

825 N Broadway

Santa Ana, CA 92701

OC Elect. Training Institute

1261 E Dyer Road

Santa Ana, CA 92705

OC First Assembly of God

1440 East Santa Clara Ave

Santa Ana, CA 92705

OC Law Enforcement Explorers Advisors Assoc

11301 Acacia Pkway

Garden Grove, CA 92840

Operating Engineers Training Trust

2190 S. Pellisser Pl.

Whittier, CA 90601

Orange County Coroner

1071 W Santa Ana Blvd.
Santa Ana, CA 92703

Orange County Electrical Training Trust

717 South Lyon Street
Santa Ana, CA 92705

Orange County Fire Authority

1 Fire Authority Road
Irvine, CA 92602

Orange County Lifeguards

34127 Pacific Coast Hwy
Dana Point, CA 92629

Orange County School of the Arts

1010 N Main St
Santa Ana, CA 92701

Orange County Sheriff Department

909 Main Street #2
Santa Ana, CA 92701

Orange Fire

176 Grand Street
Orange, CA 92866

Orange Healthcare & Wellness

920 W. La Veta Ave.
Orange, CA 92868

Orange High School

525 N. Shaffer St.
Orange, CA 92867

Orange Senior Center

170 South Olive St.
Orange, CA 92866

Pacific Haven

12072 Trask Ave.
Garden Grove, CA 92843

Palacio Senior Living

435 S. Anaheim Hills Roa
Anaheim Hills, CA 92807

Park Plaza

620 S Glassell St
Orange, CA 92866

Pasadena Fire

215 N. Marengo Ave.
Pasadena, CA 91101-1530

Poway Fire

13050 Community Road
Poway, CA 92064

Prospect Elementary

379 N Virage Str
Orange, CA 92869

Rancho Cucamonga Fire Protection District

10500 Civic Center Drive
Rancho Cucamonga, CA 91730

Rancho Santiago Center

2323 N. Broadway
Santa Ana, CA 92706

Recovery Education Institute

401 South Tustin Street Bldg 8
Orange, CA 92866

Rehabilitation Institute

1800 East Le Veta Avenue
Orange, CA 92866

Remington Education Center

1325 E. 4th Street
Santa Ana, CA 92701

Rialto Fire Department

131 S Willow Ave
Rialto, CA 92376

Richland Continuation High School

615 N Lemon Street
Orange, CA 92867

Riverside Fire

3401 University Ave
Riverside, CA 92501

Roosevelt Elementary School

501 S. Halladay
Santa Ana, CA 92701

Saddleback High School

2801 South Flower Street
Santa Ana, CA 92707

Saint Joseph's Hospital

1100 W Steward Drive
Orange, CA 92868

Salvation Army Orange County

1710 W Edinger
Santa Ana, CA 92704

Samueli Academy

1901 N Fairview St
Santa Ana, CA 92706

San Bernardino Fire

200 E Third Street
San Bernardino, CA 92410

San Clemente Lifeguards

3030 Ave Del Presidio
San Clemente, CA 92672

San Marcos Fire

1 Civic Center Drive

San Marcos, CA 92069

San Marino Fire

220 Huntington Drive

San Marino, CA 91108

Santa Ana Arts Collective

1666 N Main Street

Santa Ana, CA 92701

Santa Ana City Jail

62 Civic Center Plaza

Santa Ana, CA 92701

Santa Ana College

1530 West 17th Street

Santa Ana, CA 92706

Santa Ana High School

520 W. Walnut

Santa Ana, CA 92701

Santa Ana Police Department

60 Civic Center Plaza

Santa Ana, CA 92701

Santa Ana Senior Center

424 W. 3rd St.

Santa Ana, CA 92701

Santa Ana Unified School District

1601 E. Chestnut Ave

Santa Ana, CA 92701

Santa Ana Virtual Academy (SAVA)

1512 W Santa Ana Blvd

Santa Ana, CA 92703

Santiago Canyon College

8045 E. Chapman Avenue

Orange, CA 92869

Santiago Elementary School

2212 N Baker Street

Santa Ana, CA 92704

Santiago High School

12342 Trask Ave

Garden Grove, CA 92843

Seal Beach Lifeguards

211 Eight Street

Seal Beach, CA 90704

Segerstrom High School

2301 W MacArthur Blvd.

Santa Ana, CA 92704

Sheet Metal Apprenticeship

633 N Baldwin Park Blvd

City of Industry, CA 91746

Sierra Preparatory Academy

2021 N Grand Avenue

Santa Ana, CA 92705

South Coast College

2011 W. Chapman Ave. Roo

Orange, CA 92868

South Coast Global Medical Center

2107 Bristol St.

Santa Ana, CA 92704

South Pasadena Fire

1441 Mission Street

South Pasadena, CA 91030

Southern California Surveyors

9480 Utica Ave., #604

Rancho Cucamonga, CA 91730

Southwest Carpenters Carpentry Training Center 1

7111 Firestone Blvd. Ste 137

Buena Park, CA 90621

Southwest Carpenters Ontario Training Center

3250 E. Shelby Ct.

Ontario, CA 91761

Southwest Carpenters Sylmar Training Center

15885 Valley View Ct.

Sylmar, CA 91342

Southwest Carpenters Ventura County Training Centr

412 Dawson Dr.

Camarillo, CA 93010

Southwest Carpenters Whittier Training Center

10015 Rose Hills Rd., #200

Whittier, CA 90601

Southwest Senior Center

2201 W. McFadden

Santa Ana, CA 92704

Spurgeon Intermediate School

2701 W 5th Street

Santa Ana, CA 92703

St Edna Sub-Acute & Rehab Center

1929 N Fairview St

Santa Ana, CA 92706

St Jude Hospital

12365 Lews Street

Garden Grove, CA 92840

St. Jude Neighborhood Health Centers

731 S. Highland Ave.

Fullerton, CA 92832

State Parks Lifeguards

3030 Ave Del Presidente

San Clemente, CA 92672

Sunflower Garden

3730 S. Greenville
Santa Ana, CA 92704

Superior Court

341 The City Drive
South Orange, CA 92868

Taft Elementary School

500 W. Keller
Santa Ana, CA 92707

Taft Elementary School

1829 N. Cambridge
Orange, CA 92865

The Meridian at Anaheim Hills

525 S. Anaheim Hills Rd.
Anaheim Hills, CA 92807

The Orchard Apartments

2151 E First Street
Santa Ana, CA 92705

The Villa Center

910 N. French St.
Santa Ana, CA 92701

Theo Lacy Facility

501 City Drive South
Orange, CA 92868

Torrance Fire

1701 Crenshaw Blvd.
Torrance, CA 90501

Towers

401 West First St.
Santa Ana, CA 92701

Town & Country Manor

555 E. Memory Lane
Santa Ana, CA 92706

Tustin Police Department

300 Centennial Way
Tustin, CA 92780

UCI

750 University Tower
Irvine, CA 92697

UCI Medical Center

200 S. Manchester, Room 2105
Orange, CA 92869

Upland Fire Dept

475 N 2nd Ave
Upland, CA 91784

Valley High School

1801 S. Greenville St.

Santa Ana, CA 92704

Villa Fundamental Intermediate School

1441 E. Chestnut Ave.

Santa Ana, CA 92701

Villa Park High School

18042 Taft Ave.

Villa Park, CA 92861

Vista Fire

2009 S Melrose Drive

Vista, CA 92084

Washington Elementary School

910 Anahurst Place

Santa Ana, CA 92707

West Covina Fire

1435 W Puente Ave

West Covina, CA 91790

West Orange Elementary School

243 S. Bush Street

Orange, CA 92868

Western Medical Center

1001 North Tustin Ave

Santa Ana, CA 92701

Willard Intermediate School

1342 N. Ross St

Santa Ana, CA 92706

Yorba Middle School

935 N. Cambridge

Orange, CA 92867

FUSION

District Projects Priority Order (2024-2030)

Planning

Rancho Santiago Community College District (870)

No. Project	Campus	Source	Total Cost	Schedule of Funds					
				2024-25	2025-26	2026-27	2027-28	2028-29	2029-30
1 BARRIER REMOVAL/CAMPUS ENTRANCE SITE IMPROVEMENTS PHASE 1									
Santiago Canyon College									
Occupancy: 2023-24		STATE:	\$0						
Net ASF: 0		DISTRICT:	\$3,400,000						
2 RUSSELL HALL REPLACEMENT									
Santa Ana College									
Occupancy: 2024-25		STATE:	\$19,707,000						
Net ASF: -10,890		DISTRICT:	\$27,280,000						
3 CAMPUS ENTRANCE SITE IMPROVEMENTS PHASE 1									
Santa Ana College									
Occupancy: 2024-25		STATE:	\$0						
Net ASF: 0		DISTRICT:	\$5,300,000						
4 BUILDING K CANOPY									
Santa Ana College Phases C,W									
Occupancy: 2024-25		STATE:	\$0	\$0					
Net ASF: 0		DISTRICT:	\$1,115,000	\$1,090,000					
5 SYNTHETIC FOOTBALL FIELD									
Santa Ana College Phases C,W									
Occupancy: 2024-25		STATE:	\$0	\$0					
Net ASF: 0		DISTRICT:	\$12,000,000	\$11,700,000					
6 VILLAGE (TEMPORARY PORTABLES) RECONFIGURATION									
Santa Ana College Phase C									
Occupancy: 2024-25		STATE:	\$0	\$0					
Net ASF: 0		DISTRICT:	\$1,646,000	\$1,556,000					
7 SOCCER PATH OF TRAVEL IMPROVEMENTS									
Santiago Canyon College Phase C									
Occupancy: 2025-26		STATE:	\$0	\$0					
Net ASF: 0		DISTRICT:	\$1,181,530	\$1,121,000					
8 BARRIER REMOVAL/CAMPUS ENTRANCE SITE IMPROVEMENTS PHASE 2									
Santiago Canyon College Phases C,E									
Occupancy: 2025-26		STATE:	\$0	\$0					
Net ASF: 0		DISTRICT:	\$13,000,000	\$12,500,000					
9 CEC RENOVATION/REPLACEMENT									
Centennial Education Center Phases P,W Phases C,E									
Occupancy: 2029-30		STATE:	\$0	\$0	\$0				
Net ASF: 0		DISTRICT:	\$113,289,107	\$8,289,107	\$105,000,000				
10 OEC REMEDIATION AND REPLACEMENT									
Orange Education Center Phase C Phase E									
Occupancy: 2029-30		STATE:	\$0	\$0	\$0				
Net ASF: 0		DISTRICT:	\$79,009,140	\$73,509,140	\$2,000,000				
11 SCIENCE CENTER MODERNIZATION/WATER UTILITIES SCIENCES & HUMANITIES BUILDING									
Santiago Canyon College Phase P Phase W Phase C									
Occupancy: 2029-30		STATE:	\$0	\$0	\$0	\$0			
Net ASF: 0		DISTRICT:	\$27,094,475	\$1,000,000	\$2,000,000	\$24,094,475			
12 APPLIED TECHNOLOGY CENTER									
Santa Ana College Phases P,W Phases C,E									
Occupancy: 2029-30		STATE:	\$0	\$0	\$0	\$0			
Net ASF: 418		DISTRICT:	\$148,117,152	\$9,855,835	\$138,261,317				

13 BRISTOL & 17TH

Santa Ana College			Phases P,W	Phase C	Phase E
Occupancy: 2030-31	STATE:	\$0	\$0	\$0	\$0
Net ASF: 7,100	DISTRICT:	\$26,952,983	\$2,000,000	\$22,952,983	\$2,000,000

14 RECONFIGURATION/MODERNIZATION OF BUILDING E

Santiago Canyon College			Phases P,W	Phases C,E
Occupancy: 2030-31	STATE:	\$0	\$0	\$0
Net ASF: 0	DISTRICT:	\$34,835,446	\$3,300,000	\$31,535,446

15 LEARNING COMMONS

Santa Ana College			Phases P,W	Phases C,E
Occupancy: 2031-32	STATE:	\$41,177,821	\$2,456,962	\$38,720,859
Net ASF: 31,857	DISTRICT:	\$40,077,318	\$2,885,963	\$37,191,355

16 CAREER TECHNOLOGY EDUCATION BUILDING

Santiago Canyon College			Phases P,W	Phase C	Phase E
Occupancy: 2032-33	STATE:	\$0	\$0	\$0	\$0
Net ASF: 15,734	DISTRICT:	\$166,939,001	\$10,000,000	\$145,000,000	\$11,939,001

17 ARTS AND WORKFORCE BUILDINGS REPLACEMENT

Santa Ana College			Phases P,W	Phase C	Phase E
Occupancy: 2032-33	STATE:	\$0	\$0	\$0	\$0
Net ASF: 32,215	DISTRICT:	\$140,650,135	\$8,000,000	\$122,000,000	\$10,650,135

GRAND TOTALS			2024-25	2025-26	2026-27	2027-28	2028-29	2029-30	2030-31
STATE:	\$60,884,821	\$0	\$0	\$0	\$2,456,962	\$38,720,859	\$0	\$0	\$0
DISTRICT:	\$841,887,287	\$110,765,247	\$107,000,000	\$20,041,798	\$199,547,147	\$72,488,429	\$269,000,000	\$22,589,136	

FUSION

District Capacity/Load Ratios

Planning

Rancho Santiago Community College District (870)

District Lecture Capacity/Load Ratio

No. Project	Lect ASF	WSCH	Occupancy	2025-26	2026-27	2027-28	2028-29	2029-30	2030-31	2031-32
2 RUSSELL HALL REPLACEMENT										
	-7,490	-13,094	2024-25							
Santa Ana College										
6 VILLAGE (TEMPORARY PORTABLES) RECONFIGURATION										
	-2,963	-5,180	2024-25							
Santa Ana College										
9 CEC RENOVATION/REPLACEMENT										
	0	0	2029-30					328,033		
Centennial Education Center									191%	
10 OEC REMEDIATION AND REPLACEMENT										
	0	0	2029-30					328,033		
Orange Education Center									191%	
11 SCIENCE CENTER MODERNIZATION/WATER UTILITIES SCIENCES & HUMANITIES BUILDING										
	-3,578	-5,670	2029-30					322,363		
Santiago Canyon College									187%	
12 APPLIED TECHNOLOGY CENTER										
	-3,591	-6,278	2029-30					316,085		
Santa Ana College									184%	
13 BRISTOL & 17TH										
	850	1,486	2030-31						317,571	
Santa Ana College										186%
14 RECONFIGURATION/MODERNIZATION OF BUILDING E										
	0	0	2030-31						317,571	
Santiago Canyon College										186%
15 LEARNING COMMONS										
	-984	-1,720	2031-32							315,851
Santa Ana College										185%
16 CAREER TECHNOLOGY EDUCATION BUILDING										
	-4,981	-7,894	2032-33							
Santiago Canyon College										
17 ARTS AND WORKFORCE BUILDINGS REPLACEMENT										
	840	1,469	2032-33							
Santa Ana College										
Lecture Summary / Totals				2025-26	2026-27	2027-28	2028-29	2029-30	2030-31	2031-32
Lecture ASF	Actual*/Projected WSCH			173,930	173,441	172,954	172,466	171,981	171,129	170,281
208,409	Cumulative Capacity			328,033	328,033	328,033	328,033	328,033	316,085	317,571
	Capacity/Load Ratio			189%	189%	190%	190%	191%	185%	186%

FUSION

District Capacity/Load Ratios

Planning

Rancho Santiago Community College District (870)

District Lab Capacity/Load Ratio

No. Project	Lab ASF	WSCH	Occupancy	2025-26	2026-27	2027-28	2028-29	2029-30	2030-31	2031-32
2 RUSSELL HALL REPLACEMENT										
	18,763	8,239	2024-25							
Santa Ana College										
6 VILLAGE (TEMPORARY PORTABLES) RECONFIGURATION										
	4,674	1,881	2024-25							
Santa Ana College										
9 CEC RENOVATION/REPLACEMENT										
	0	0	2029-30					90,140		
Centennial Education Center								53%		
10 OEC REMEDIATION AND REPLACEMENT										
	0	0	2029-30					90,140		
Orange Education Center								53%		
11 SCIENCE CENTER MODERNIZATION/WATER UTILITIES SCIENCES & HUMANITIES BUILDING										
	3,578	1,457	2029-30					91,597		
Santiago Canyon College								54%		
12 APPLIED TECHNOLOGY CENTER										
	2,911	69	2029-30					91,666		
Santa Ana College								54%		
13 BRISTOL & 17TH										
	4,200	1,634	2030-31						93,300	
Santa Ana College									55%	
14 RECONFIGURATION/MODERNIZATION OF BUILDING E										
	0	0	2030-31						93,300	
Santiago Canyon College									55%	
15 LEARNING COMMONS										
	3,101	1,196	2031-32							94,496
Santa Ana College										56%
16 CAREER TECHNOLOGY EDUCATION BUILDING										
	12,999	4,979	2032-33							
Santiago Canyon College										
17 ARTS AND WORKFORCE BUILDINGS REPLACEMENT										
	10,084	4,339	2032-33							
Santa Ana College										
Lab Summary / Totals				2025-26	2026-27	2027-28	2028-29	2029-30	2030-31	2031-32
Lab ASF	Actual*/Projected WSCH			170,905	170,426	169,947	169,468	168,990	168,152	167,321
195,721	Cumulative Capacity			90,140	90,140	90,140	90,140	90,140	91,666	93,300
	Capacity/Load Ratio			53%	53%	53%	53%	53%	55%	56%

FUSION

District Capacity/Load Ratios

Planning

Rancho Santiago Community College District (870)

District Office Capacity/Load Ratio

No.	Project	Off ASF	FTE	Occupancy	2025-26	2026-27	2027-28	2028-29	2029-30	2030-31	2031-32
2	RUSSELL HALL REPLACEMENT										
		-3,940	-23	2024-25							
	Santa Ana College										
6	VILLAGE (TEMPORARY PORTABLES) RECONFIGURATION										
		-1,494	-9	2024-25							
	Santa Ana College										
9	CEC RENOVATION/REPLACEMENT										
		0	0	2029-30					1,078		
	Centennial Education Center								112%		
10	OEC REMEDIATION AND REPLACEMENT										
		0	0	2029-30					1,078		
	Orange Education Center								112%		
12	APPLIED TECHNOLOGY CENTER										
		770	4	2029-30					1,082		
	Santa Ana College								113%		
13	BRISTOL & 17TH										
		850	5	2030-31						1,087	
	Santa Ana College									111%	
14	RECONFIGURATION/MODERNIZATION OF BUILDING E										
		0	0	2030-31						1,087	
	Santiago Canyon College									111%	
15	LEARNING COMMONS										
		1,769	10	2031-32							1,097
	Santa Ana College										109%
16	CAREER TECHNOLOGY EDUCATION BUILDING										
		1,106	6	2032-33							
	Santiago Canyon College										
17	ARTS AND WORKFORCE BUILDINGS REPLACEMENT										
		2,617	15	2032-33							
	Santa Ana College										
Office Summary / Totals					2025-26	2026-27	2027-28	2028-29	2029-30	2030-31	2031-32
	Office ASF	Actual*/Projected FTE			872	895	917	939	961	983	1,005
	199,153	Cumulative Capacity			1,078	1,078	1,078	1,078	1,078	1,082	1,087
		Capacity/Load Ratio			124%	120%	118%	115%	112%	110%	108%

FUSION

District Capacity/Load Ratios

Planning

Rancho Santiago Community College District (870)

District Library Capacity/Load Ratio

No.	Project	Lib ASF	Occupancy	2025-26	2026-27	2027-28	2028-29	2029-30	2030-31	2031-32
2	RUSSELL HALL REPLACEMENT									
		2,899	2024-25							
	Santa Ana College									
9	CEC RENOVATION/REPLACEMENT									
		0	2029-30					103,006		
	Centennial Education Center							81%		
10	OEC REMEDIATION AND REPLACEMENT									
		0	2029-30					103,006		
	Orange Education Center							81%		
14	RECONFIGURATION/MODERNIZATION OF BUILDING E									
		0	2030-31						103,006	
	Santiago Canyon College								81%	
15	LEARNING COMMONS									
		24,446	2031-32							127,452
	Santa Ana College									101%
16	CAREER TECHNOLOGY EDUCATION BUILDING									
		-3,241	2032-33							
	Santiago Canyon College									
Library Summary / Totals				2025-26	2026-27	2027-28	2028-29	2029-30	2030-31	2031-32
Library ASF	Actual*/Projected ASF	129,683	129,162	128,641	128,124	127,609	127,098	126,589		
100,107	Cumulative Capacity	103,006	103,006	103,006	103,006	103,006	103,006	103,006		
	Capacity/Load Ratio	79%	80%	80%	80%	81%	81%	81%		

FUSION

Load Distribution & Staff Forecast

Planning

Rancho Santiago Community College District (870)

District Load Distribution

	Instructional Staff FTE	Total Campus WSCH	Off-Campus WSCH	On-Campus WSCH	P.E. Laboratory WSCH	On-Campus Lecture WSCH	On-Campus Laboratory
Actual Fall							
2022	701	419,620	58,182	361,438	6,956	115,377	239,107
2023	798	418,448	61,077	357,371	5,153	106,827	245,392
Forecast							
2024	849	417,279	62,384	354,895	9,093	174,418	171,385
2025	872	416,110	62,209	353,901	9,068	173,930	170,905
2026	895	414,943	62,035	352,908	9,043	173,441	170,426
2027	917	413,777	61,859	351,918	9,017	172,954	169,947
2028	939	412,612	61,685	350,927	8,991	172,466	169,468
2029	961	411,448	61,512	349,936	8,966	171,981	168,990
2030	983	409,410	61,207	348,203	8,922	171,129	168,152

FUSION

Load Distribution & Staff Forecast

Planning

Rancho Santiago Community College District (870)

Instructional Load by Campus

WSCH Distributed to Campuses or Other Locations

	Actual Fall			Forecast						
	2021	2022	2023	2024	2025	2026	2027	2028	2029	2030
Centennial Education Center										
	58,681	72,091	80,426	54,246	54,094	53,943	53,791	53,640	53,488	53,223
Orange Education Center										
	36,066	32,604	38,999	20,864	20,806	20,747	20,689	20,631	20,572	20,471
Rancho Santiago District Office*										
	-	-	-	-	-	-	-	-	-	-
Santa Ana College										
	197,469	207,964	197,968	221,158	220,538	219,920	219,302	218,684	218,068	216,987
Santiago Canyon College										
	104,547	106,961	101,055	121,011	120,672	120,333	119,995	119,657	119,320	118,729
Total	396,763	419,620	418,448	417,279	416,110	414,943	413,777	412,612	411,448	409,410

FUSION

Load Distribution & Staff Forecast

Planning

Rancho Santiago Community College District (870)

Total District Library Load

(a)	Total Day-Graded (b)	Number of Campuses (c)	Initial ASF (3,795/Camp) (d)	First 3,000 Day Graded (3.83/DG) (e)	Between 3k - 9k (3.39/DG) (f)	Above 9,000 (2.94/DG) (g)	Total ASF (d+e+f+g)
Forecast							
2024	36,007	5	18,975	11,490	20,340	79,401	130,206
2025	35,828	5	18,975	11,490	20,340	78,874	129,679
2026	35,653	5	18,975	11,490	20,340	78,360	129,165
2027	35,476	5	18,975	11,490	20,340	77,839	128,644
2028	35,299	5	18,975	11,490	20,340	77,319	128,124
2029	35,124	5	18,975	11,490	20,340	76,805	127,610
2030	34,952	5	18,975	11,490	20,340	76,299	127,104

FUSION

Load Distribution & Staff Forecast

Planning

Library Load by Campus or Location

	Forecast						
	2024	2025	2026	2027	2028	2029	2030
Centennial Education Center							
	16,927	16,859	16,791	16,723	16,656	16,589	16,523
	13%	13%	13%	13%	13%	13%	13%
Orange Education Center							
	0	0	0	0	0	0	0
	0%	0%	0%	0%	0%	0%	0%
Rancho Santiago District Office*							
	0	0	0	0	0	0	0
	0%	0%	0%	0%	0%	0%	0%
Santa Ana College							
	69,009	68,731	68,456	68,180	67,906	67,633	67,362
	53%	53%	53%	53%	53%	53%	53%
Santiago Canyon College							
	44,270	44,092	43,915	43,738	43,562	43,387	43,213
	34%	34%	34%	34%	34%	34%	34%
Total	130,206	129,682	129,162	128,641	128,124	127,609	127,098

FUSION

Load Distribution & Staff Forecast

Planning

Rancho Santiago Community College District (870)

Total District AV, Radio, TV Load

(a)	Total Day-Graded (b)	Number of Campuses (c)	Initial ASF (3,500/Camp p) (d)	First 3,000 Day Graded (1.50/DG) (e)	Between 3k - 9k (0.75/DG) (f)	Above 9,000 (0.25/DG) (g)	Total ASF (d+e+f+g)
Forecast							
2024	36,007	5	17,500	4,500	4,500	6,752	33,252
2025	35,828	5	17,500	4,500	4,500	6,707	33,207
2026	35,653	5	17,500	4,500	4,500	6,663	33,163
2027	35,476	5	17,500	4,500	4,500	6,619	33,119
2028	35,299	5	17,500	4,500	4,500	6,575	33,075
2029	35,124	5	17,500	4,500	4,500	6,531	33,031
2030	34,952	5	17,500	4,500	4,500	6,488	32,988

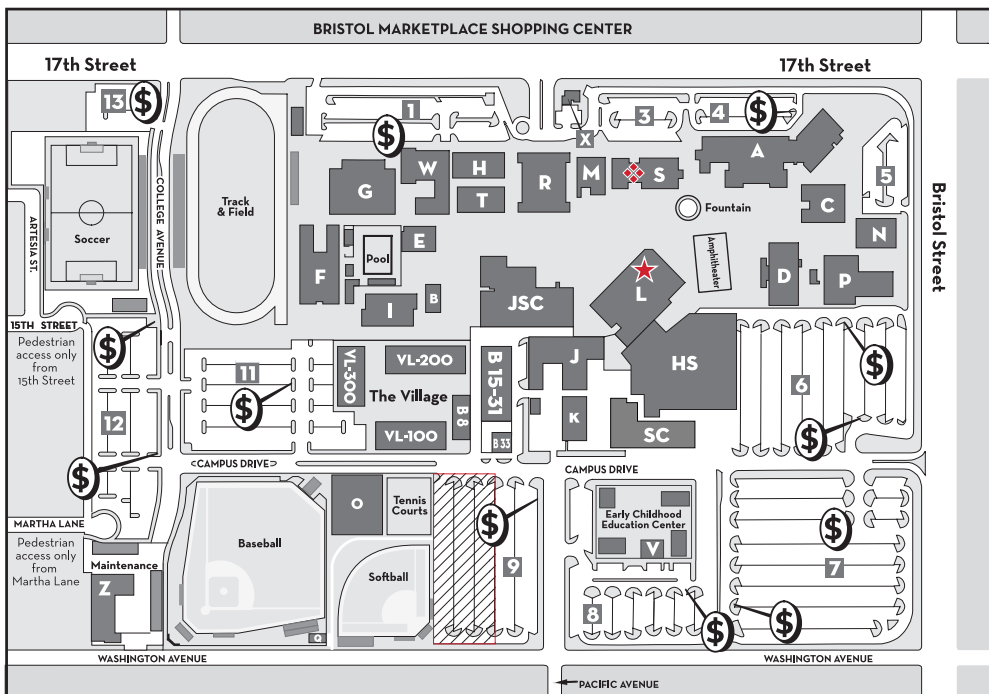
FUSION

Load Distribution & Staff Forecast

Planning

AV, Radio, TV Load by Campus or Location

	Forecast						
	2024	2025	2026	2027	2028	2029	2030
Centennial Education Center							
	4,323	4,317	4,311	4,305	4,300	4,294	4,288
	13%	13%	13%	13%	13%	13%	13%
Orange Education Center							
	0	0	0	0	0	0	0
	0%	0%	0%	0%	0%	0%	0%
Rancho Santiago District Office*							
	0	0	0	0	0	0	0
	0%	0%	0%	0%	0%	0%	0%
Santa Ana College							
	17,624	17,600	17,576	17,553	17,530	17,506	17,484
	53%	53%	53%	53%	53%	53%	53%
Santiago Canyon College							
	11,306	11,290	11,275	11,260	11,246	11,231	11,216
	34%	34%	34%	34%	34%	34%	34%
Total	33,253	33,207	33,162	33,118	33,076	33,031	32,988



- PARKING**
- (\$) Daily Permit Dispenser (\$2.00 daily)
 - 1 **STAFF**
 - 2 **SECURITY**
 - 3 **VISITOR**
 - 4 - 5 **STAFF**
 - 6 - 13 **STUDENT** (except as posted)

CAUTION!
 Parking in Bristol Marketplace, across the street from Santa Ana College, is not allowed. Violations will result in tow-aways. RSCCD requires parking permits for student and staff lots at Santa Ana College and Santiago Canyon College. **Semester Parking Permits** may be purchased at time of registration for \$30.00 in the Student Business Office in the Johnson Student Center (JSC-202) at Santa Ana College, as well as in the Cashier's Office at Santiago Canyon College. The purchase of your permit funds parking services and vehicle security when parked on campus.

▨ Denotes "Closed for Construction" ★ Student Help Desk - Inside Nealley Library ❖ Student Resource Desk: S-Building Lobby

SAC FACILITIES AND LOCATIONS

A Cesar Chavez Building		Disabled Students Program (DSPS)	JSC-108	P Phillips Hall Theatre	
Academic Computing Center	A-106	EOPS/CARE/CalWORKs	JSC-212	Q Sports Concession	
Distance Education	A-101	Financial Aid	JSC-201	R Russell Hall	
B Middle College High School		Grab-N-Go	JSC-116	S Administration Building – First Floor:	
SAUSD Administration Office	B-10	Guardian Scholars	JSC-215	Admissions / Records	S-101
Classrooms (The Village)	VL-300	Health & Wellness Center	JSC-110	Counseling	S-112
B 8 Adult Education Center Office		International Student Program	JSC-208	Graduation Office	S-104
B 15-31 Adult Education Classrooms		Lactation Room	JSC-110	Promise Program	S-110
B 33 Adult Education Classrooms		Reprographics	JSC-120	PUENTE Program	S-110
C Fine Arts / Art Gallery		(TriO) SSSP Upward Bound	JSC-209	University Transfer Center & Center for Teacher Education	S-110
D Dunlap Hall		Student Business Office	JSC-202	Administration Building – 2nd Floor:	
Honors Program	D-428	Student Life	JSC-102	Community Services Program	S-203
Learning Center	D-307	Student Placement	JSC-203	Foundation	S-201
E Fitness Center		The Spot	JSC-101	Scholarship Program	S-201
F Locker Rooms		K Welding / Auto Diesel		SC Science Center	
G Cook Gym		L Nealley Library – 1st Floor		T Technical Arts	
H Hammond Hall		L Building – 2nd Floor:		V Early Childhood Education Center	
HS Health Science		Assessment Center	L-223	Classroom	V-103
I Classroom Building		Career Center	L-222	VL The Village	
J Auto Shop		Math Study Center	L-204	Student Outreach	VL-205
JSC Johnson Student Center		MESA Program	L-206	Middle College High School Classrooms	VL-300
Associated Student Government (ASG)	JSC-103	M Planetarium		W Kinesiology	
Bookstore (in Campus Store)	JSC-117	Veterans Resource Center	M-120	X Security / Safety	
Cafe -Coffee/Juice Bar	JSC-118	N Music Building		Z Maintenance	
Campus Store/Quick Stop	JSC-117	O Central Plant			

Certification of Inventory for Fiscal Year: 2023 - 2024

Campus Name: **Santa Ana College**
Certified ASF: **596,342**
Certified OGSF: **818,239**

District Approval



Authorized Signature

10/2/23

Date

Marvin Martinez, Chancellor

Printed Name

State Approval



Authorized Signature

5/6/2024

Date

Included:

(2) Signed Copies of Report 17 Certification Sheet if the submission was not certified and submitted electronically by the CBO.

FUSION

Campus Capacity/Load Ratios

Planning

Rancho Santiago Community College District (870) Santa Ana College (871)

Campus Lecture Capacity/Load Ratio

No. Project	Lect ASF	WSCH	Occupancy	2025-26	2026-27	2027-28	2028-29	2029-30	2030-31	2031-32
2 RUSSELL HALL REPLACEMENT										
	-7,490	-13,094	2024-25							
Santa Ana College										
6 VILLAGE (TEMPORARY PORTABLES) RECONFIGURATION										
	-2,963	-5,180	2024-25							
Santa Ana College										
12 APPLIED TECHNOLOGY CENTER										
	-3,591	-6,278	2029-30					146,820		
Santa Ana College										
								159%		
13 BRISTOL & 17TH										
	850	1,486	2030-31						148,306	
Santa Ana College										
									162%	
15 LEARNING COMMONS										
	-984	-1,720	2031-32							146,586
Santa Ana College										
										160%
17 ARTS AND WORKFORCE BUILDINGS REPLACEMENT										
	840	1,469	2032-33							
Santa Ana College										
Lecture Summary / Totals				2025-26	2026-27	2027-28	2028-29	2029-30	2030-31	2031-32
Lecture ASF	Actual*/Projected WSCH			93,288	93,026	92,765	92,503	92,243	91,786	91,331
98,025	Cumulative Capacity			153,098	153,098	153,098	153,098	153,098	146,820	148,306
	Capacity/Load Ratio			164%	165%	165%	166%	166%	160%	162%

FUSION

Campus Capacity/Load Ratios

Planning

Rancho Santiago Community College District (870)

Santa Ana College (871)

Campus Lab Capacity/Load Ratio

No. Project	Lab ASF	WSCH	Occupancy	2025-26	2026-27	2027-28	2028-29	2029-30	2030-31	2031-32
2 RUSSELL HALL REPLACEMENT										
	18,763	8,239	2024-25							
Santa Ana College										
6 VILLAGE (TEMPORARY PORTABLES) RECONFIGURATION										
	4,674	1,881	2024-25							
Santa Ana College										
12 APPLIED TECHNOLOGY CENTER										
	2,911	69	2029-30					65,781		
Santa Ana College										
								67%		
13 BRISTOL & 17TH										
	4,200	1,634	2030-31						67,415	
Santa Ana College										
									69%	
15 LEARNING COMMONS										
	3,101	1,196	2031-32							68,611
Santa Ana College										
										71%
17 ARTS AND WORKFORCE BUILDINGS REPLACEMENT										
	10,084	4,339	2032-33							
Santa Ana College										
Lab Summary / Totals				2025-26	2026-27	2027-28	2028-29	2029-30	2030-31	2031-32
Lab ASF	Actual*/Projected WSCH			99,242	98,964	98,686	98,408	98,131	97,644	97,161
143,673	Cumulative Capacity			65,712	65,712	65,712	65,712	65,712	65,781	67,415
	Capacity/Load Ratio			66%	66%	67%	67%	67%	67%	69%

FUSION

Campus Capacity/Load Ratios

Planning

Rancho Santiago Community College District (870)

Santa Ana College (871)

Campus Office Capacity/Load Ratio

No. Project	Off ASF	FTE	Occupancy	2025-26	2026-27	2027-28	2028-29	2029-30	2030-31	2031-32
2 RUSSELL HALL REPLACEMENT										
	-3,940	-23	2024-25							
Santa Ana College										
6 VILLAGE (TEMPORARY PORTABLES) RECONFIGURATION										
	-1,494	-9	2024-25							
Santa Ana College										
12 APPLIED TECHNOLOGY CENTER										
	770	4	2029-30					544		
Santa Ana College										
								111%		
13 BRISTOL & 17TH										
	850	5	2030-31						549	
Santa Ana College										
									109%	
15 LEARNING COMMONS										
	1,769	10	2031-32							559
Santa Ana College										
										108%
17 ARTS AND WORKFORCE BUILDINGS REPLACEMENT										
	2,617	15	2032-33							
Santa Ana College										
Office Summary / Totals				2025-26	2026-27	2027-28	2028-29	2029-30	2030-31	2031-32
Office ASF	Actual*/Projected FTE			444	456	468	480	492	504	516
100,162	Cumulative Capacity			540	540	540	540	540	544	549
	Capacity/Load Ratio			122%	118%	115%	113%	110%	108%	106%

FUSION

Campus Capacity/Load Ratios

Planning

Rancho Santiago Community College District (870)

Santa Ana College (871)

Campus Library Capacity/Load Ratio

No. Project	Lib ASF	Occupancy	2025-26	2026-27	2027-28	2028-29	2029-30	2030-31	2031-32
2 RUSSELL HALL REPLACEMENT									
	2,899	2024-25							
Santa Ana College									
15 LEARNING COMMONS									
	24,446	2031-32							70,040
Santa Ana College									
									104%
Library Summary / Totals			2025-26	2026-27	2027-28	2028-29	2029-30	2030-31	2031-32
Library ASF	Actual*/Projected ASF		68,732	68,456	68,180	67,906	67,633	67,362	67,092
42,695	Cumulative Capacity		45,594	45,594	45,594	45,594	45,594	45,594	45,594
	Capacity/Load Ratio		66%	67%	67%	67%	67%	68%	68%

FUSION

Load Distribution & Staff Forecast

Planning

Rancho Santiago Community College District (870)

Santa Ana College (871)

Campus Load Distribution

	Instructional Staff FTE	Total Campus WSCH	Off-Campus WSCH	On-Campus WSCH	P.E. Laboratory WSCH	On-Campus Lecture WSCH	On-Campus Laboratory
Actual Fall							
2022	359	207,964	22,211	185,753	4,607	53,906	127,241
2023	386	197,968	22,865	175,103	3,485	51,585	120,033
Forecast							
2024	432	221,158	22,116	199,042	5,971	93,550	99,521
2025	444	220,538	22,054	198,484	5,955	93,288	99,242
2026	456	219,920	21,992	197,928	5,938	93,026	98,964
2027	468	219,302	21,930	197,372	5,921	92,765	98,686
2028	480	218,684	21,868	196,816	5,904	92,503	98,408
2029	492	218,068	21,807	196,261	5,888	92,243	98,131
2030	504	216,987	21,699	195,288	5,859	91,786	97,644

FUSION

Load Distribution & Staff Forecast

Planning

Rancho Santiago Community College District (870) Santa Ana College (871)

FTE Instruction Staff Worksheet - Fall 2024

College Instructional Staff, Fall Term. Included are all certificated staff for day, extended day, and adult education except those whose office is located off-campus.

Staff Type (a)	Total Certificated Instructional and Statutory Staff FTE (b)	Non-Instructional Portion of FTE (c)	Net Total Instructional and Statutory Staff FTE (b-c)
Instructor	350	0	350
Counselor Include certified special program coordinators, economic opportunity program, coordinators, statutory and Title 5 required staff, et. al.	35	0	35
Department Administrator	47	0	47
Librarian Include certificated director of audio/visual, et. al.	7	7	0
Institutional Administrator Include certificated persons with responsibilities covering the entire institution, such as Superintendent, Assistant Superintendent, President, Dean of Instruction, Director of Data Processing, et. al.	6	6	0
Projected 2024 Totals	445	13	432

Column (b) is the total number of Column (a) distributed to categories

Column (c) is the fraction of time express as Full-Time Equivalentents devoted to noninstructional work.

Counselors, department administrators, and statutorily required staff are counted as if they had no noninstructional duties.

FUSION

Load Distribution & Staff Forecast

Planning

Rancho Santiago Community College District (870) Santa Ana College (871)

FTE Instruction Staff Worksheet - Fall 2025

College Instructional Staff, Fall Term. Included are all certificated staff for day, extended day, and adult education except those whose office is located off-campus.

Staff Type (a)	Total Certificated Instructional and Statutory Staff FTE (b)	Non-Instructional Portion of FTE (c)	Net Total Instructional and Statutory Staff FTE (b-c)
Instructor	362	0	362
Counselor Include certified special program coordinators, economic opportunity program, coordinators, statutory and Title 5 required staff, et. al.	35	0	35
Department Administrator	47	0	47
Librarian Include certificated director of audio/visual, et. al.	7	7	0
Institutional Administrator Include certificated persons with responsibilities covering the entire institution, such as Superintendent, Assistant Superintendent, President, Dean of Instruction, Director of Data Processing, et. al.	6	6	0
Projected 2025 Totals	457	13	444

Column (b) is the total number of Column (a) distributed to categories

Column (c) is the fraction of time express as Full-Time Equivalentents devoted to noninstructional work.

Counselors, department administrators, and statutorily required staff are counted as if they had no noninstructional duties.

FUSION

Load Distribution & Staff Forecast

Planning

Rancho Santiago Community College District (870)
Santa Ana College (871)

FTE Instruction Staff Worksheet - Fall 2026

College Instructional Staff, Fall Term. Included are all certificated staff for day, extended day, and adult education except those whose office is located off-campus.

Staff Type (a)	Total Certificated Instructional and Statutory Staff FTE (b)	Non-Instructional Portion of FTE (c)	Net Total Instructional and Statutory Staff FTE (b-c)
Instructor	374	0	374
Counselor Include certified special program coordinators, economic opportunity program, coordinators, statutory and Title 5 required staff, et. al.	35	0	35
Department Administrator	47	0	47
Librarian Include certificated director of audio/visual, et. al.	7	7	0
Institutional Administrator Include certificated persons with responsibilities covering the entire institution, such as Superintendent, Assistant Superintendent, President, Dean of Instruction, Director of Data Processing, et. al.	6	6	0
Projected 2026 Totals	469	13	456

Column (b) is the total number of Column (a) distributed to categories

Column (c) is the fraction of time express as Full-Time Equivalentents devoted to noninstructional work.

Counselors, department administrators, and statutorily required staff are counted as if they had no noninstructional duties.

FUSION

Load Distribution & Staff Forecast

Planning

Rancho Santiago Community College District (870)
Santa Ana College (871)

FTE Instruction Staff Worksheet - Fall 2027

College Instructional Staff, Fall Term. Included are all certificated staff for day, extended day, and adult education except those whose office is located off-campus.

Staff Type (a)	Total Certificated Instructional and Statutory Staff FTE (b)	Non-Instructional Portion of FTE (c)	Net Total Instructional and Statutory Staff FTE (b-c)
Instructor	386	0	386
Counselor Include certified special program coordinators, economic opportunity program, coordinators, statutory and Title 5 required staff, et. al.	35	0	35
Department Administrator	47	0	47
Librarian Include certificated director of audio/visual, et. al.	7	7	0
Institutional Administrator Include certificated persons with responsibilities covering the entire institution, such as Superintendent, Assistant Superintendent, President, Dean of Instruction, Director of Data Processing, et. al.	6	6	0
Projected 2027 Totals	481	13	468

Column (b) is the total number of Column (a) distributed to categories

Column (c) is the fraction of time express as Full-Time Equivalentents devoted to noninstructional work.

Counselors, department administrators, and statutorily required staff are counted as if they had no noninstructional duties.

FUSION

Load Distribution & Staff Forecast

Planning

Rancho Santiago Community College District (870) Santa Ana College (871)

FTE Instruction Staff Worksheet - Fall 2028

College Instructional Staff, Fall Term. Included are all certificated staff for day, extended day, and adult education except those whose office is located off-campus.

Staff Type (a)	Total Certificated Instructional and Statutory Staff FTE (b)	Non-Instructional Portion of FTE (c)	Net Total Instructional and Statutory Staff FTE (b-c)
Instructor	398	0	398
Counselor Include certified special program coordinators, economic opportunity program, coordinators, statutory and Title 5 required staff, et. al.	35	0	35
Department Administrator	47	0	47
Librarian Include certificated director of audio/visual, et. al.	7	7	0
Institutional Administrator Include certificated persons with responsibilities covering the entire institution, such as Superintendent, Assistant Superintendent, President, Dean of Instruction, Director of Data Processing, et. al.	6	6	0
Projected 2028 Totals	493	13	480

Column (b) is the total number of Column (a) distributed to categories

Column (c) is the fraction of time express as Full-Time Equivalentents devoted to noninstructional work.

Counselors, department administrators, and statutorily required staff are counted as if they had no noninstructional duties.

FUSION

Load Distribution & Staff Forecast

Planning

Rancho Santiago Community College District (870)
Santa Ana College (871)

FTE Instruction Staff Worksheet - Fall 2029

College Instructional Staff, Fall Term. Included are all certificated staff for day, extended day, and adult education except those whose office is located off-campus.

Staff Type (a)	Total Certificated Instructional and Statutory Staff FTE (b)	Non-Instructional Portion of FTE (c)	Net Total Instructional and Statutory Staff FTE (b-c)
Instructor	410	0	410
Counselor Include certified special program coordinators, economic opportunity program, coordinators, statutory and Title 5 required staff, et. al.	35	0	35
Department Administrator	47	0	47
Librarian Include certificated director of audio/visual, et. al.	7	7	0
Institutional Administrator Include certificated persons with responsibilities covering the entire institution, such as Superintendent, Assistant Superintendent, President, Dean of Instruction, Director of Data Processing, et. al.	6	6	0
Projected 2029 Totals	505	13	492

Column (b) is the total number of Column (a) distributed to categories

Column (c) is the fraction of time express as Full-Time Equivalentents devoted to noninstructional work.

Counselors, department administrators, and statutorily required staff are counted as if they had no noninstructional duties.

FUSION

Load Distribution & Staff Forecast

Planning

Rancho Santiago Community College District (870) Santa Ana College (871)

FTE Instruction Staff Worksheet - Fall 2030

College Instructional Staff, Fall Term. Included are all certificated staff for day, extended day, and adult education except those whose office is located off-campus.

Staff Type (a)	Total Certificated Instructional and Statutory Staff FTE (b)	Non-Instructional Portion of FTE (c)	Net Total Instructional and Statutory Staff FTE (b-c)
Instructor	422	0	422
Counselor Include certified special program coordinators, economic opportunity program, coordinators, statutory and Title 5 required staff, et. al.	35	0	35
Department Administrator	47	0	47
Librarian Include certificated director of audio/visual, et. al.	7	7	0
Institutional Administrator Include certificated persons with responsibilities covering the entire institution, such as Superintendent, Assistant Superintendent, President, Dean of Instruction, Director of Data Processing, et. al.	6	6	0
Projected 2030 Totals	517	13	504

Column (b) is the total number of Column (a) distributed to categories

Column (c) is the fraction of time express as Full-Time Equivalentents devoted to noninstructional work.

Counselors, department administrators, and statutorily required staff are counted as if they had no noninstructional duties.

FUSION

Cumulative Sum of Existing & Proposed Space (2025-2031)

Planning

Rancho Santiago Community College District (870) Santa Ana College (871)

Priority & Year of Occupancy (a)	Classroom 100's (b)	Laboratory 200's (c)	Office 300's (d)	Library 400's (e)	AV Radio TV 530-535 (f)	P.E. 520-525 (g)	Assembly 610 & 615 (h)	Inactive 050-070 (i)	All Other Areas (j)	Total ASF (k)
Total ASF	98,025	143,673	100,162	42,695	4,778	67,265	12,469	40,899	86,067	596,033
12	2029	APPLIED TECHNOLOGY CENTER								
	-3,591	2,911	770	0	0	0	0	0	328	418
	94,434	146,584	100,932	42,695	4,778	67,265	12,469	40,899	86,395	596,451
13	2030	BRISTOL & 17TH								
	850	4,200	850	0	0	0	0	0	1,200	7,100
	95,284	150,784	101,782	42,695	4,778	67,265	12,469	40,899	87,595	603,551
15	2031	LEARNING COMMONS								
	-984	3,101	1,769	24,446	-256	0	0	0	3,781	31,857
	94,300	153,885	103,551	67,141	4,522	67,265	12,469	40,899	91,376	635,408
Total Existing and Proposed Space										
	94,300	153,885	103,551	67,141	4,522	67,265	12,469	40,899	91,376	635,408

FUSION

Capacity of Net Existing On-Campus ASF

Planning

Rancho Santiago Community College District (870)

Santa Ana College (871)

Classrooms, Classroom Service (Room Use Code 100s)

Summary	Total Net ASF	ASF per 100 WSCH	Total Capacity WSCH
Classroom Space	98,025	57.2	171,372

Laboratories & Laboratory Service Area (Room Use Codes 210, 215, 220, 225, 230, 235, 255)

TOP Code	Net ASF	ASF per 100 WSCH	Capacity WSCH
0401 - Biology, General	14,231	235.0	6,056
0402 - Botany, General	762	235.0	324
0403 - Microbiology	4,439	235.0	1,889
0410 - Anatomy and Physiology	3,786	235.0	1,611
0514 - Office Technology/Office Computer Applications	2,891	128.0	2,259
0602 - Journalism	695	214.0	325
0604 - Radio and Television	3,266	214.0	1,526
0614 - Digital Media	1,789	214.0	836
0701 - Information Technology, General	9,740	171.0	5,696
0702 - Computer Information Systems	1,563	171.0	914
0901 - Engineering, General (requires Calculus)(Transfer)	1,852	321.0	577
0947 - Diesel Technology	10,424	856.0	1,218
0948 - Automotive Technology	9,494	856.0	1,109
0953 - Drafting Technology	1,597	321.0	498
0956 - Manufacturing and Industrial Technology	13,060	385.0	3,392
1002 - Art (Painting, Drawing and Sculpture)	9,493	257.0	3,694
1004 - Music	4,577	257.0	1,781
1007 - Dramatic Arts	2,016	257.0	784
1008 - Dance	1,887	257.0	734
1011 - Photography	575	257.0	224
1030 - Graphic Arts and Design	1,257	257.0	489
1218 - Occupational Therapy Technology	1,128	214.0	527
1221 - Pharmacy Technology	1,726	214.0	807
1230 - Nursing	1,437	214.0	671
1250 - Emergency Medical Services	897	214.0	419
1299 - Other Health Occupations	1,346	214.0	629
1303 - Fashion	2,033	257.0	791
1306 - Nutrition, Foods, and Culinary Arts	924	257.0	360
1402 - Paralegal	1,004	150.0	669
1701 - Mathematics, General	1,339	150.0	893
1900 - Physical Sciences	1,216	257.0	473
1902 - Physics, General	2,343	257.0	912
1905 - Chemistry, General	17,908	257.0	6,968
1914 - Geology	5,350	257.0	2,082
2001 - Psychology, General	1,534	150.0	1,023
2133 - Fire Technology	843	214.0	394
2202 - Anthropology	1,379	150.0	919
2206 - Geography	1,412	150.0	941
4999 - Other Interdisciplinary Studies	460	257.0	179
Summary	Total Net ASF	ASF per 100 WSCH	Total Capacity WSCH
Lab Space	143,673	258.4	55,592

Office & Office Service Areas (Room Use Code 300s)

Summary	Total Net ASF	ASF per FTE	Total Capacity FTE
Office Space	100,162	175.0	572

FUSION

Project Intent & Scope

Planning

Rancho Santiago Community College District (870) Santa Ana College (871)

District Priority & Project: **2 RUSSELL HALL REPLACEMENT**

Project Type: Replacement
 Total Estimated Cost: \$46,987,000
 Anticipated Source(s) of Funds: State and Non-State
 Type of Construction:
 Seismic Retrofit:
 If Existing - Age:
 If Existing - Condition:

Anticipated Time Schedule

	Land Acquisition	Preliminary Plans	Working Drawings	Construction	Equipment	Occupancy
Year	0	2017	2018	2019	2019	2024-25
Estimated Cost	\$0	\$1,971,000	\$1,102,000	\$39,921,000	\$3,993,000	

Explain why this project is needed:

Reconstruct Russell Hall to accommodate the Allied Health programs. This will allow the programs to come together in this facility versus being spread out all over the campus. It will allow for state of the art facilities to resemble an actual working environment for outpatient, inpatient, and home health care scenarios.

FUSION

Project Intent & Scope

Planning

Rancho Santiago Community College District (870) Santa Ana College (871)

District Priority & Project: **2 RUSSELL HALL REPLACEMENT**

Outline of Project Space - Buildings and Remodelings

	Classroom 100s	Laboratory 210-255	Office 300s	Library 400s	AV/TV 530-535	All Other	Total ASF
Project Primary	4,980	23,882	2,528	2,899	0	1,943	36,232
Project Secondary	-12,470	-5,119	-6,468	0	0	-23,065	-47,122
Project Net ASF	-7,490	18,763	-3,940	2,899	0	-21,122	-10,890

Project Net Capacity

Classrooms, Classroom Service (Room Use Code 100s)

Summary	Net ASF	ASF per 100 WSCH	Capacity WSCH
Classroom Space	-7,490	57.2	-13,094

Laboratories & Laboratory Service Area (Room Use Codes 210, 215, 220, 225, 230, 235, 255)

TOP Code	Primary Effect			Secondary Effect		
	Net ASF	ASF per 100 WSCH	Capacity WSCH	Net ASF	ASF per 100 WSCH	Capacity WSCH
-						
Summary	Net ASF					Capacity WSCH
Lab Space	18,763					8,239

Office & Office Service Areas (Room Use Code 300s)

Summary	Net ASF	ASF per FTE	Capacity FTE
Office Space	-3,940	175.0	-22.51

FUSION

Project Intent & Scope

Planning

**Rancho Santiago Community College District (870)
Santa Ana College (871)**

District Priority & Project: **3 CAMPUS ENTRANCE SITE IMPROVEMENTS PHASE 1**

Project Type: Reconstruction

Total Estimated Cost: \$5,300,000

Anticipated Source(s) of Funds: Non-State

Type of Construction:

Seismic Retrofit:

If Existing - Age:

If Existing - Condition:

Anticipated Time Schedule

	Land Acquisition	Preliminary Plans	Working Drawings	Construction	Equipment	Occupancy
Year	0	2021	2021	2023	0	2024-25
Estimated Cost	\$0	\$192,140	\$213,143	\$4,894,717	\$0	

Explain why this project is needed:

This project will create a new campus entrance and upgrade the area with many site improvements.

FUSION

Project Intent & Scope

Planning

Rancho Santiago Community College District (870)
Santa Ana College (871)

District Priority & Project: **3 CAMPUS ENTRANCE SITE IMPROVEMENTS PHASE 1**

Outline of Project Space - Buildings and Remodelings

	Classroom 100s	Laboratory 210-255	Office 300s	Library 400s	AV/TV 530-535	All Other	Total ASF
Project Primary	0	0	0	0	0	0	0
Project Secondary	0	0	0	0	0	0	0
Project Net ASF	0	0	0	0	0	0	0

Project Net Capacity

Classrooms, Classroom Service (Room Use Code 100s)

Summary	Net ASF	ASF per 100 WSCH	Capacity WSCH
Classroom Space	0	0.0	0

Laboratories & Laboratory Service Area (Room Use Codes 210, 215, 220, 225, 230, 235, 255)

TOP Code	Primary Effect			Secondary Effect		
	Net ASF	ASF per 100 WSCH	Capacity WSCH	Net ASF	ASF per 100 WSCH	Capacity WSCH
-						
Summary	Net ASF			Capacity WSCH		
Lab Space				0		0

Office & Office Service Areas (Room Use Code 300s)

Summary	Net ASF	ASF per FTE	Capacity FTE
Office Space	0	0.0	0.00

FUSION

Project Intent & Scope

Planning

Rancho Santiago Community College District (870)
Santa Ana College (871)

District Priority & Project: **4 BUILDING K CANOPY**

Project Type: Reconstruction

Total Estimated Cost: \$1,115,000

Anticipated Source(s) of Funds: Non-State

Type of Construction:

Seismic Retrofit:

If Existing - Age:

If Existing - Condition:

Anticipated Time Schedule

	Land Acquisition	Preliminary Plans	Working Drawings	Construction	Equipment	Occupancy
Year	0	2023	2024	2024	0	2024-25
Estimated Cost	\$0	\$25,000	\$50,000	\$1,040,000	\$0	

Explain why this project is needed:

This project will upgrade the canopy at Building K on the Santa Ana College campus.

FUSION

Project Intent & Scope

Planning

Rancho Santiago Community College District (870)
Santa Ana College (871)

District Priority & Project: **4 BUILDING K CANOPY**

Outline of Project Space - Buildings and Remodelings

	Classroom 100s	Laboratory 210-255	Office 300s	Library 400s	AV/TV 530-535	All Other	Total ASF
Project Primary	0	0	0	0	0	0	0
Project Secondary	0	0	0	0	0	0	0
Project Net ASF	0	0	0	0	0	0	0

Project Net Capacity

Classrooms, Classroom Service (Room Use Code 100s)

Summary	Net ASF	ASF per 100 WSCH	Capacity WSCH
Classroom Space	0	0.0	0

Laboratories & Laboratory Service Area (Room Use Codes 210, 215, 220, 225, 230, 235, 255)

TOP Code	Primary Effect			Secondary Effect		
	Net ASF	ASF per 100 WSCH	Capacity WSCH	Net ASF	ASF per 100 WSCH	Capacity WSCH
-						
Summary	Net ASF			Capacity WSCH		
Lab Space				0		0

Office & Office Service Areas (Room Use Code 300s)

Summary	Net ASF	ASF per FTE	Capacity FTE
Office Space	0	0.0	0.00

FUSION

Project Intent & Scope

Planning

Rancho Santiago Community College District (870) Santa Ana College (871)

District Priority & Project: **5 SYNTHETIC FOOTBALL FIELD**

Project Type: Reconstruction

Total Estimated Cost: \$12,000,000

Anticipated Source(s) of Funds: Non-State

Type of Construction:

Seismic Retrofit:

If Existing - Age:

If Existing - Condition:

Anticipated Time Schedule

	Land Acquisition	Preliminary Plans	Working Drawings	Construction	Equipment	Occupancy
Year	0	2023	2024	2024	0	2024-25
Estimated Cost	\$0	\$300,000	\$400,000	\$11,300,000	\$0	

Explain why this project is needed:

This project will upgrade the football field on the Santa Ana College campus.

FUSION

Project Intent & Scope

Planning

Rancho Santiago Community College District (870)
Santa Ana College (871)

District Priority & Project: **5 SYNTHETIC FOOTBALL FIELD**

Outline of Project Space - Buildings and Remodelings

	Classroom 100s	Laboratory 210-255	Office 300s	Library 400s	AV/TV 530-535	All Other	Total ASF
Project Primary	0	0	0	0	0	0	0
Project Secondary	0	0	0	0	0	0	0
Project Net ASF	0	0	0	0	0	0	0

Project Net Capacity

Classrooms, Classroom Service (Room Use Code 100s)

Summary	Net ASF	ASF per 100 WSCH	Capacity WSCH
Classroom Space	0	0.0	0

Laboratories & Laboratory Service Area (Room Use Codes 210, 215, 220, 225, 230, 235, 255)

TOP Code	Primary Effect			Secondary Effect		
	Net ASF	ASF per 100 WSCH	Capacity WSCH	Net ASF	ASF per 100 WSCH	Capacity WSCH
-						
Summary	Net ASF			Capacity WSCH		
Lab Space	0			0		

Office & Office Service Areas (Room Use Code 300s)

Summary	Net ASF	ASF per FTE	Capacity FTE
Office Space	0	0.0	0.00

FUSION

Project Intent & Scope

Planning

Rancho Santiago Community College District (870) Santa Ana College (871)

District Priority & Project: **6 VILLAGE (TEMPORARY PORTABLES) RECONFIGURATION**

Project Type: Reconstruction

Total Estimated Cost: \$1,646,000

Anticipated Source(s) of Funds: Non-State

Type of Construction:

Seismic Retrofit:

If Existing - Age:

If Existing - Condition:

Anticipated Time Schedule

	Land Acquisition	Preliminary Plans	Working Drawings	Construction	Equipment	Occupancy
Year	0	2023	2023	2024	0	2024-25
Estimated Cost	\$0	\$35,000	\$55,000	\$1,556,000	\$0	

Explain why this project is needed:

This project will reconfigure the spaces in the temporary portables on the Santa Ana College campus. The overall space changes will not change from the current space array.

FUSION

Project Intent & Scope

Planning

Rancho Santiago Community College District (870) Santa Ana College (871)

District Priority & Project: **6 VILLAGE (TEMPORARY PORTABLES) RECONFIGURATION**

Outline of Project Space - Buildings and Remodelings

	Classroom 100s	Laboratory 210-255	Office 300s	Library 400s	AV/TV 530-535	All Other	Total ASF
Project Primary	897	4,674	300	0	0	6,577	12,448
Project Secondary	-3,860	0	-1,794	0	0	-6,794	-12,448
Project Net ASF	-2,963	4,674	-1,494	0	0	-217	0

Project Net Capacity

Classrooms, Classroom Service (Room Use Code 100s)

Summary	Net ASF	ASF per 100 WSCH	Capacity WSCH
Classroom Space	-2,963	57.2	-5,180

Laboratories & Laboratory Service Area (Room Use Codes 210, 215, 220, 225, 230, 235, 255)

TOP Code	Primary Effect			Secondary Effect		
	Net ASF	ASF per 100 WSCH	Capacity WSCH	Net ASF	ASF per 100 WSCH	Capacity WSCH
-						
Summary	Net ASF					Capacity WSCH
Lab Space	4,674					1,881

Office & Office Service Areas (Room Use Code 300s)

Summary	Net ASF	ASF per FTE	Capacity FTE
Office Space	-1,494	175.0	-8.54

FUSION

Project Intent & Scope

Planning

Rancho Santiago Community College District (870) Santa Ana College (871)

District Priority & Project: **12 APPLIED TECHNOLOGY CENTER**

Project Type: Replacement
 Total Estimated Cost: \$148,117,153
 Anticipated Source(s) of Funds: Non-State
 Type of Construction:
 Seismic Retrofit:
 If Existing - Age:
 If Existing - Condition:

Anticipated Time Schedule

	Land Acquisition	Preliminary Plans	Working Drawings	Construction	Equipment	Occupancy
Year	0	2026	2026	2027	2027	2029-30
Estimated Cost	\$0	\$5,544,993	\$4,310,842	\$134,091,714	\$4,169,603	

Explain why this project is needed:

The current diesel technology, automotive technology, manufacturing, and industrial technology programs are housed in 1950's era facilities with inadequate space and are spread throughout the campus. This prevents interdisciplinary collaboration and natural synergies that occur within these areas. In addition, outdated building systems and aged infrastructure do not support the current program needs. This project will consolidate and expand the vocational programs and provide state of the art facilities for students to learn in. As part of this project the Auto Diesel (Bldg 18), Welding/Diesel (Bldg 19), Technical Building (Bldg 24) and Hammond Hall (Bldg 9) will be demolished.

FUSION

Project Intent & Scope

Planning

Rancho Santiago Community College District (870)
Santa Ana College (871)

District Priority & Project: **12 APPLIED TECHNOLOGY CENTER**

Outline of Project Space - Buildings and Remodelings

	Classroom 100s	Laboratory 210-255	Office 300s	Library 400s	AV/TV 530-535	All Other	Total ASF
Project Primary	5,000	41,700	4,250	0	0	1,300	52,250
Project Secondary	-8,591	-38,789	-3,480	0	0	-972	-51,832
Project Net ASF	-3,591	2,911	770	0	0	328	418

Project Net Capacity

Classrooms, Classroom Service (Room Use Code 100s)

Summary	Net ASF	ASF per 100 WSCH	Capacity WSCH
Classroom Space	-3,591	57.2	-6,278

Laboratories & Laboratory Service Area (Room Use Codes 210, 215, 220, 225, 230, 235, 255)

TOP Code	Primary Effect			Secondary Effect		
	Net ASF	ASF per 100 WSCH	Capacity WSCH	Net ASF	ASF per 100 WSCH	Capacity WSCH
-						
Summary	Net ASF			Capacity WSCH		
Lab Space			2,911			69

Office & Office Service Areas (Room Use Code 300s)

Summary	Net ASF	ASF per FTE	Capacity FTE
Office Space	770	175.0	4.40

FUSION

Project Intent & Scope

Planning

Rancho Santiago Community College District (870) Santa Ana College (871)

District Priority & Project: **13 BRISTOL & 17TH**

Project Type: New

Total Estimated Cost: \$26,952,983

Anticipated Source(s) of Funds: Non-State

Type of Construction:

Seismic Retrofit:

If Existing - Age:

If Existing - Condition:

Anticipated Time Schedule

	Land Acquisition	Preliminary Plans	Working Drawings	Construction	Equipment	Occupancy
Year	0	2026	2026	2028	2029	2030-31
Estimated Cost	\$0	\$800,000	\$1,200,000	\$22,952,983	\$2,000,000	

Explain why this project is needed:

This project will construct a Culinary and Hospitality Management building. The building will include one general classroom, and a few Culinary Arts labs along with appropriate support space.

FUSION

Project Intent & Scope

Planning

Rancho Santiago Community College District (870) Santa Ana College (871)

District Priority & Project: **13 BRISTOL & 17TH**

Outline of Project Space - Buildings and Remodelings

	Classroom 100s	Laboratory 210-255	Office 300s	Library 400s	AV/TV 530-535	All Other	Total ASF
Project Primary	850	4,200	850	0	0	1,200	7,100
Project Secondary	0	0	0	0	0	0	0
Project Net ASF	850	4,200	850	0	0	1,200	7,100

Project Net Capacity

Classrooms, Classroom Service (Room Use Code 100s)

Summary	Net ASF	ASF per 100 WSCH	Capacity WSCH
Classroom Space	850	57.2	1,486

Laboratories & Laboratory Service Area (Room Use Codes 210, 215, 220, 225, 230, 235, 255)

TOP Code	Primary Effect			Secondary Effect		
	Net ASF	ASF per 100 WSCH	Capacity WSCH	Net ASF	ASF per 100 WSCH	Capacity WSCH
-						
Summary	Net ASF			Capacity WSCH		
Lab Space	4,200			1,634		

Office & Office Service Areas (Room Use Code 300s)

Summary	Net ASF	ASF per FTE	Capacity FTE
Office Space	850	175.0	4.86

FUSION

Project Intent & Scope

Planning

Rancho Santiago Community College District (870) Santa Ana College (871)

District Priority & Project: **15 LEARNING COMMONS**

Project Type: Replacement

Total Estimated Cost: \$81,255,140

Anticipated Source(s) of Funds: State and Non-State

Type of Construction:

Seismic Retrofit:

If Existing - Age:

If Existing - Condition:

Anticipated Time Schedule

	Land Acquisition	Preliminary Plans	Working Drawings	Construction	Equipment	Occupancy
Year	0	2026	2026	2027	2027	2031-32
Estimated Cost	\$0	\$2,632,305	\$2,710,620	\$70,163,243	\$5,748,972	

Explain why this project is needed:

The current Library at Santa Ana College is too small which causes constant overcrowding and long waits for students doing research in the electronic computer area. Although there was a minor renovation in 1994, the facility has never had major modifications, so mechanical and electrical systems have outlived their usefulness. The current facility was constructed before the computer was invented, which has caused major issues to get data and electrical infrastructure installed throughout the building. In addition, this added heat load has overtaxed the HVAC system. The current Facilities Condition Index (FCI) is 38% suggesting major upgrades are needed. In addition, the FCI model does not take ADA code or Seismic code upgrades into consideration when determining the FCI. These two deficiencies alone will take several million dollars to rectify. This project will demolish the existing 67 year old undersized facility and construct an expanded, real "Learning Commons" with combined library and tutorial services in a central location to improve student's access to these important support services. This project will construct 72,641 ASF consisting of 4,900 ASF in Lab space, 7,301 ASF in Office space, 53,260 ASF in Library/Study Space, 1,500 ASF in AV/TV space and 5,680 ASF in "Other" space.

FUSION

Project Intent & Scope

Planning

Rancho Santiago Community College District (870) Santa Ana College (871)

District Priority & Project: **15 LEARNING COMMONS**

Outline of Project Space - Buildings and Remodelings

	Classroom 100s	Laboratory 210-255	Office 300s	Library 400s	AV/TV 530-535	All Other	Total ASF
Project Primary	0	4,900	7,301	53,260	1,500	5,580	72,541
Project Secondary	-984	-1,799	-5,532	-28,814	-1,756	-1,799	-40,684
Project Net ASF	-984	3,101	1,769	24,446	-256	3,781	31,857

Project Net Capacity

Classrooms, Classroom Service (Room Use Code 100s)

Summary	Net ASF	ASF per 100 WSCH	Capacity WSCH
Classroom Space	-984	57.2	-1,720

Laboratories & Laboratory Service Area (Room Use Codes 210, 215, 220, 225, 230, 235, 255)

TOP Code	Primary Effect			Secondary Effect		
	Net ASF	ASF per 100 WSCH	Capacity WSCH	Net ASF	ASF per 100 WSCH	Capacity WSCH
-						
Summary	Net ASF		Capacity WSCH			Capacity WSCH
Lab Space	3,101					1,196

Office & Office Service Areas (Room Use Code 300s)

Summary	Net ASF	ASF per FTE	Capacity FTE
Office Space	1,769	175.0	10.11

FUSION

Project Intent & Scope

Planning

Rancho Santiago Community College District (870) Santa Ana College (871)

District Priority & Project: **17 ARTS AND WORKFORCE BUILDINGS REPLACEMENT**

Project Type: Replacement
 Total Estimated Cost: \$140,650,135
 Anticipated Source(s) of Funds: Non-State
 Type of Construction:
 Seismic Retrofit:
 If Existing - Age:
 If Existing - Condition:

Anticipated Time Schedule

	Land Acquisition	Preliminary Plans	Working Drawings	Construction	Equipment	Occupancy
Year	0	2028	2028	2029	2030	2032-33
Estimated Cost	\$0	\$3,500,000	\$4,500,000	\$122,000,000	\$10,650,135	

Explain why this project is needed:

Phillips Hall (#14), Music Building (#25) and Art-C Building (#29) are aging facilities that are beyond their useful lives, no longer support the instructional programs that are housed in this complex and are in need of replacement. This project involves the replacement of 37,114 ASF that is currently housed in the building complex that was constructed in 1955, 1970 and 1972. FACILITIES PROBLEMS INCLUDE: - Inefficient configuration of labs, services and support spaces are not adequate to support instruction. - There is insufficient technology infrastructure throughout the building to support current instructional methods. The existing projectors are used for transparencies; there are no capabilities for powerpoint presentations or internet access. - Current instructional programs are not adequately supported by old and failing mechanical, electrical and plumbing systems, including: insufficient electrical capacity; inoperable ventilation, cooling and heating systems. - Hazardous material, including asbestos, is present in the building. - The instructional spaces within the complex do not comply with current ADA requirements for access for students and instructors with disabilities. - The restroom capacity in the existing building does not meet current codes. PROPOSED PROJECT: - Replace space in Phillips Hall (# 14), Music Building (#25) and Art Building (#29) to adequately serve instructional and support functions. - Replace mechanical, electrical and plumbing systems to meet current codes and to exceed Title 24 Energy Codes by at least 15%. - Construct new building to meet current code requirements for structural, ADA, fire and life safety.

FUSION

Project Intent & Scope

Planning

Rancho Santiago Community College District (870) Santa Ana College (871)

District Priority & Project: **17 ARTS AND WORKFORCE BUILDINGS REPLACEMENT**

Outline of Project Space - Buildings and Remodelings

	Classroom 100s	Laboratory 210-255	Office 300s	Library 400s	AV/TV 530-535	All Other	Total ASF
Project Primary	5,000	27,000	5,000	0	7,000	26,000	70,000
Project Secondary	-4,160	-16,916	-2,383	0	-65	-14,261	-37,785
Project Net ASF	840	10,084	2,617	0	6,935	11,739	32,215

Project Net Capacity

Classrooms, Classroom Service (Room Use Code 100s)

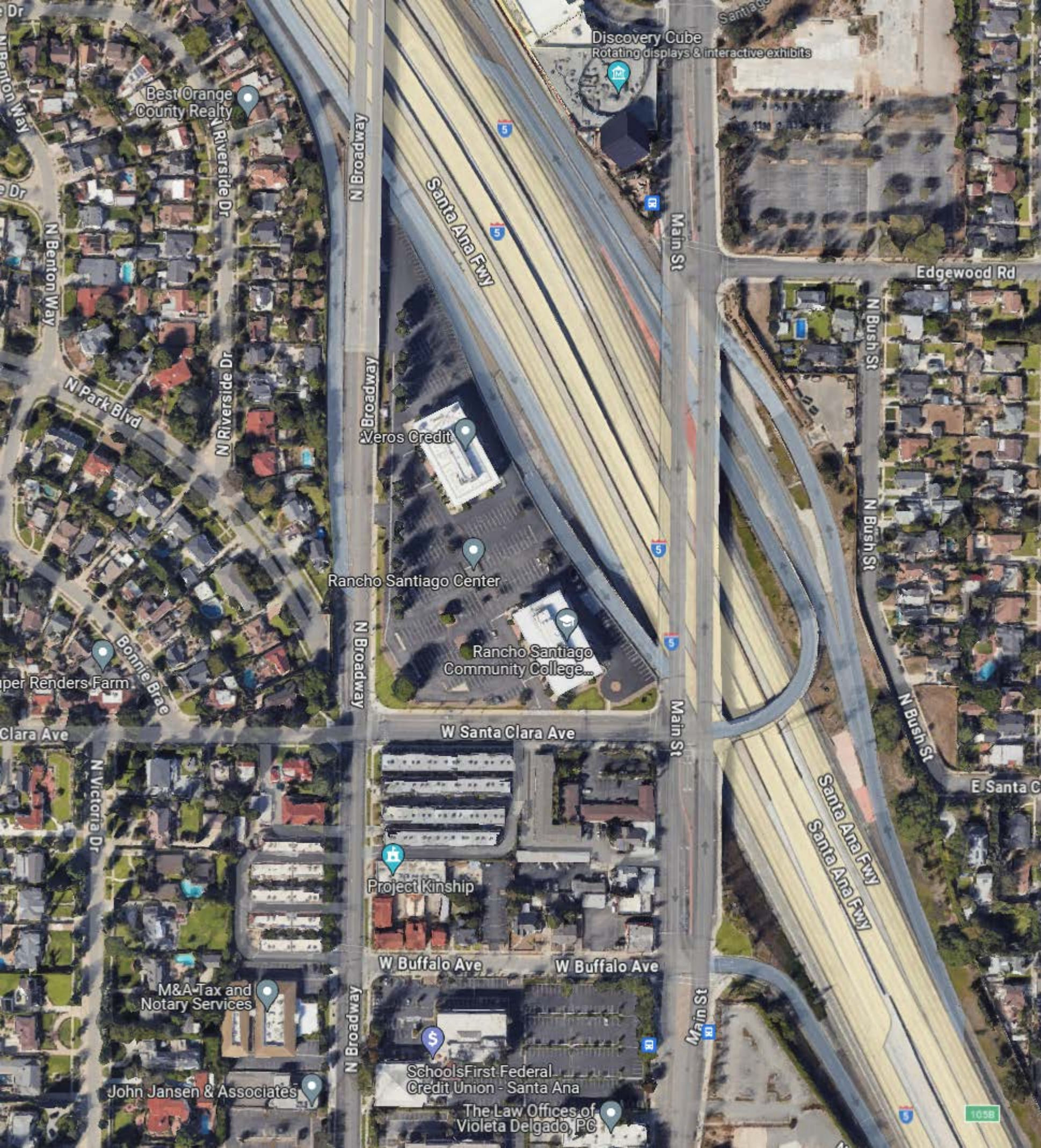
Summary	Net ASF	ASF per 100 WSCH	Capacity WSCH
Classroom Space	840	57.2	1,469

Laboratories & Laboratory Service Area (Room Use Codes 210, 215, 220, 225, 230, 235, 255)

TOP Code	Primary Effect			Secondary Effect		
	Net ASF	ASF per 100 WSCH	Capacity WSCH	Net ASF	ASF per 100 WSCH	Capacity WSCH
-						
Summary	Net ASF					Capacity WSCH
Lab Space	10,084					4,339

Office & Office Service Areas (Room Use Code 300s)

Summary	Net ASF	ASF per FTE	Capacity FTE
Office Space	2,617	175.0	14.95



Discovery Cube
Rotating displays & interactive exhibits

Best Orange
County Realty

N Broadway

Santa Ana Fwy

Main St

Edgewood Rd

Veros Credit

Rancho Santiago Center

Rancho Santiago
Community College

N Bush St

N Bush St

N Bush St

E Santa C

W Santa Clara Ave

Project Kinship

W Buffalo Ave

W Buffalo Ave

Santa Ana Fwy
Santa Ana Fwy

M&A Tax and
Notary Services

John Jansen & Associates

SchoolsFirst Federal
Credit Union - Santa Ana

The Law Offices of
Violeta Delgado, PC

105B

Certification of Inventory for Fiscal Year: 2023 - 2024

Campus Name: **Rancho Santiago District Office***
Certified ASF: **43,013**
Certified OGSF: **54,784**

District Approval



Authorized Signature

10/2/23

Date

Marvin Martinez, Chancellor

Printed Name

State Approval



Authorized Signature

5/6/2024

Date

Included:

(2) Signed Copies of Report 17 Certification Sheet if the submission was not certified and submitted electronically by the CBO.

FUSION

Campus Capacity/Load Ratios

Planning

Rancho Santiago Community College District (870)

Rancho Santiago District Office* (872)

Campus Library Capacity/Load Ratio

No. Project	Lib ASF	Occupancy	2025-26	2026-27	2027-28	2028-29	2029-30	2030-31	2031-32
-------------	---------	-----------	---------	---------	---------	---------	---------	---------	---------

Library Summary / Totals		2025-26	2026-27	2027-28	2028-29	2029-30	2030-31	2031-32
Library ASF	Actual*/Projected ASF	0	0	0	0	0	0	0
0	Cumulative Capacity	0	0	0	0	0	0	0
	Capacity/Load Ratio							

FUSION

Campus Capacity/Load Ratios

Planning

Rancho Santiago Community College District (870)

Rancho Santiago District Office* (872)

Campus AV/TV Capacity/Load Ratio

No. Project	AV/TV ASF Occupancy	2025-26	2026-27	2027-28	2028-29	2029-30	2030-31	2031-32
-------------	---------------------	---------	---------	---------	---------	---------	---------	---------

AV/TV Summary / Totals		2025-26	2026-27	2027-28	2028-29	2029-30	2030-31	2031-32
AV/TV ASF	Actual*/Projected ASF	0	0	0	0	0	0	0
0	Cumulative Capacity	0	0	0	0	0	0	0
	Capacity/Load Ratio							

FUSION

Load Distribution & Staff Forecast

Planning

Rancho Santiago Community College District (870)

Rancho Santiago District Office* (872)

Campus Load Distribution

	Instructional Staff FTE	Total Campus WSCH	Off-Campus WSCH	On-Campus WSCH	P.E. Laboratory WSCH	On-Campus Lecture WSCH	On-Campus Laboratory
Actual Fall							
2022	0	0	0	0	0	0	0
2023	0	0	0	0	0	0	0
Forecast							
2024	0	0	0	0	0	0	0
2025	0	0	0	0	0	0	0
2026	0	0	0	0	0	0	0
2027	0	0	0	0	0	0	0
2028	0	0	0	0	0	0	0
2029	0	0	0	0	0	0	0
2030	0	0	0	0	0	0	0

FUSION

Load Distribution & Staff Forecast

Planning

Rancho Santiago Community College District (870)

Rancho Santiago District Office* (872)

FTE Instruction Staff Worksheet - Fall 2024

College Instructional Staff, Fall Term. Included are all certificated staff for day, extended day, and adult education except those whose office is located off-campus.

Staff Type (a)	Total Certificated Instructional and Statutory Staff FTE (b)	Non-Instructional Portion of FTE (c)	Net Total Instructional and Statutory Staff FTE (b-c)
Instructor	0	0	0
Counselor Include certified special program coordinators, economic opportunity program, coordinators, statutory and Title 5 required staff, et. al.	0	0	0
Department Administrator	0	0	0
Librarian Include certificated director of audio/visual, et. al.	0	0	0
Institutional Administrator Include certificated persons with responsibilities covering the entire institution, such as Superintendent, Assistant Superintendent, President, Dean of Instruction, Director of Data Processing, et. al.	0	0	0
Projected 2024 Totals	0	0	0

Column (b) is the total number of Column (a) distributed to categories

Column (c) is the fraction of time express as Full-Time Equivalentents devoted to noninstructional work.

Counselors, department administrators, and statutorily required staff are counted as if they had no noninstructional duties.

FUSION

Load Distribution & Staff Forecast

Planning

Rancho Santiago Community College District (870)

Rancho Santiago District Office* (872)

FTE Instruction Staff Worksheet - Fall 2025

College Instructional Staff, Fall Term. Included are all certificated staff for day, extended day, and adult education except those whose office is located off-campus.

Staff Type (a)	Total Certificated Instructional and Statutory Staff FTE (b)	Non-Instructional Portion of FTE (c)	Net Total Instructional and Statutory Staff FTE (b-c)
Instructor	0	0	0
Counselor Include certified special program coordinators, economic opportunity program, coordinators, statutory and Title 5 required staff, et. al.	0	0	0
Department Administrator	0	0	0
Librarian Include certificated director of audio/visual, et. al.	0	0	0
Institutional Administrator Include certificated persons with responsibilities covering the entire institution, such as Superintendent, Assistant Superintendent, President, Dean of Instruction, Director of Data Processing, et. al.	0	0	0
Projected 2025 Totals	0	0	0

Column (b) is the total number of Column (a) distributed to categories

Column (c) is the fraction of time express as Full-Time Equivalentents devoted to noninstructional work.

Counselors, department administrators, and statutorily required staff are counted as if they had no noninstructional duties.

FUSION

Load Distribution & Staff Forecast

Planning

Rancho Santiago Community College District (870)

Rancho Santiago District Office* (872)

FTE Instruction Staff Worksheet - Fall 2026

College Instructional Staff, Fall Term. Included are all certificated staff for day, extended day, and adult education except those whose office is located off-campus.

Staff Type (a)	Total Certificated Instructional and Statutory Staff FTE (b)	Non-Instructional Portion of FTE (c)	Net Total Instructional and Statutory Staff FTE (b-c)
Instructor	0	0	0
Counselor Include certified special program coordinators, economic opportunity program, coordinators, statutory and Title 5 required staff, et. al.	0	0	0
Department Administrator	0	0	0
Librarian Include certificated director of audio/visual, et. al.	0	0	0
Institutional Administrator Include certificated persons with responsibilities covering the entire institution, such as Superintendent, Assistant Superintendent, President, Dean of Instruction, Director of Data Processing, et. al.	0	0	0
Projected 2026 Totals	0	0	0

Column (b) is the total number of Column (a) distributed to categories

Column (c) is the fraction of time express as Full-Time Equivalentents devoted to noninstructional work.

Counselors, department administrators, and statutorily required staff are counted as if they had no noninstructional duties.

FUSION

Load Distribution & Staff Forecast

Planning

Rancho Santiago Community College District (870)

Rancho Santiago District Office* (872)

FTE Instruction Staff Worksheet - Fall 2027

College Instructional Staff, Fall Term. Included are all certificated staff for day, extended day, and adult education except those whose office is located off-campus.

Staff Type (a)	Total Certificated Instructional and Statutory Staff FTE (b)	Non-Instructional Portion of FTE (c)	Net Total Instructional and Statutory Staff FTE (b-c)
Instructor	0	0	0
Counselor Include certified special program coordinators, economic opportunity program, coordinators, statutory and Title 5 required staff, et. al.	0	0	0
Department Administrator	0	0	0
Librarian Include certificated director of audio/visual, et. al.	0	0	0
Institutional Administrator Include certificated persons with responsibilities covering the entire institution, such as Superintendent, Assistant Superintendent, President, Dean of Instruction, Director of Data Processing, et. al.	0	0	0
Projected 2027 Totals	0	0	0

Column (b) is the total number of Column (a) distributed to categories

Column (c) is the fraction of time express as Full-Time Equivalentents devoted to noninstructional work.

Counselors, department administrators, and statutorily required staff are counted as if they had no noninstructional duties.

FUSION

Load Distribution & Staff Forecast

Planning

Rancho Santiago Community College District (870)

Rancho Santiago District Office* (872)

FTE Instruction Staff Worksheet - Fall 2028

College Instructional Staff, Fall Term. Included are all certificated staff for day, extended day, and adult education except those whose office is located off-campus.

Staff Type (a)	Total Certificated Instructional and Statutory Staff FTE (b)	Non-Instructional Portion of FTE (c)	Net Total Instructional and Statutory Staff FTE (b-c)
Instructor	0	0	0
Counselor Include certified special program coordinators, economic opportunity program, coordinators, statutory and Title 5 required staff, et. al.	0	0	0
Department Administrator	0	0	0
Librarian Include certificated director of audio/visual, et. al.	0	0	0
Institutional Administrator Include certificated persons with responsibilities covering the entire institution, such as Superintendent, Assistant Superintendent, President, Dean of Instruction, Director of Data Processing, et. al.	0	0	0
Projected 2028 Totals	0	0	0

Column (b) is the total number of Column (a) distributed to categories

Column (c) is the fraction of time express as Full-Time Equivalentents devoted to noninstructional work.

Counselors, department administrators, and statutorily required staff are counted as if they had no noninstructional duties.

FUSION

Load Distribution & Staff Forecast

Planning

Rancho Santiago Community College District (870)

Rancho Santiago District Office* (872)

FTE Instruction Staff Worksheet - Fall 2029

College Instructional Staff, Fall Term. Included are all certificated staff for day, extended day, and adult education except those whose office is located off-campus.

Staff Type (a)	Total Certificated Instructional and Statutory Staff FTE (b)	Non-Instructional Portion of FTE (c)	Net Total Instructional and Statutory Staff FTE (b-c)
Instructor	0	0	0
Counselor Include certified special program coordinators, economic opportunity program, coordinators, statutory and Title 5 required staff, et. al.	0	0	0
Department Administrator	0	0	0
Librarian Include certificated director of audio/visual, et. al.	0	0	0
Institutional Administrator Include certificated persons with responsibilities covering the entire institution, such as Superintendent, Assistant Superintendent, President, Dean of Instruction, Director of Data Processing, et. al.	0	0	0
Projected 2029 Totals	0	0	0

Column (b) is the total number of Column (a) distributed to categories

Column (c) is the fraction of time express as Full-Time Equivalentents devoted to noninstructional work.

Counselors, department administrators, and statutorily required staff are counted as if they had no noninstructional duties.

FUSION

Load Distribution & Staff Forecast

Planning

Rancho Santiago Community College District (870)

Rancho Santiago District Office* (872)

FTE Instruction Staff Worksheet - Fall 2030

College Instructional Staff, Fall Term. Included are all certificated staff for day, extended day, and adult education except those whose office is located off-campus.

Staff Type (a)	Total Certificated Instructional and Statutory Staff FTE (b)	Non-Instructional Portion of FTE (c)	Net Total Instructional and Statutory Staff FTE (b-c)
Instructor	0	0	0
Counselor Include certified special program coordinators, economic opportunity program, coordinators, statutory and Title 5 required staff, et. al.	0	0	0
Department Administrator	0	0	0
Librarian Include certificated director of audio/visual, et. al.	0	0	0
Institutional Administrator Include certificated persons with responsibilities covering the entire institution, such as Superintendent, Assistant Superintendent, President, Dean of Instruction, Director of Data Processing, et. al.	0	0	0
Projected 2030 Totals	0	0	0

Column (b) is the total number of Column (a) distributed to categories

Column (c) is the fraction of time express as Full-Time Equivalentents devoted to noninstructional work.

Counselors, department administrators, and statutorily required staff are counted as if they had no noninstructional duties.

FUSION

Cumulative Sum of Existing & Proposed Space (2025-2031)

Planning

Rancho Santiago Community College District (870)
Rancho Santiago District Office* (872)

Priority & Year of Occupancy (a)	Classroom 100's (b)	Laboratory 200's (c)	Office 300's (d)	Library 400's (e)	AV Radio TV 530-535 (f)	P.E. 520-525 (g)	Assembly 610 & 615 (h)	Inactive 050-070 (i)	All Other Areas (j)	Total ASF (k)
Total ASF	0	0	30,352	0	0	0	0	3,239	9,280	42,871

Total Existing and Proposed Space										
	0	0	30,352	0	0	0	0	3,239	9,280	42,871

FUSION

Capacity of Net Existing On-Campus ASF

Planning

Rancho Santiago Community College District (870)

Rancho Santiago District Office* (872)

Classrooms, Classroom Service (Room Use Code 100s)

Summary	Total Net ASF	ASF per 100 WSCH	Total Capacity WSCH
Classroom Space	0	0.0	0

Laboratories & Laboratory Service Area (Room Use Codes 210, 215, 220, 225, 230, 235, 255)

TOP Code	Net ASF	ASF per 100 WSCH	Capacity WSCH
-			
Summary	Total Net ASF	ASF per 100 WSCH	Total Capacity WSCH
Lab Space	0	0.0	0

Office & Office Service Areas (Room Use Code 300s)

Summary	Total Net ASF	ASF per FTE	Total Capacity FTE
Office Space	30,352	200.0	152

FUSION

Project Intent & Scope

Planning

Rancho Santiago Community College District (870)

Rancho Santiago District Office* (872)

District Priority & Project: **0 THIS CAMPUS HAS NO PROJECTS**

Project Type:

Total Estimated Cost: \$0

Anticipated Source(s) of Funds:

Type of Construction:

Seismic Retrofit:

If Existing - Age:

If Existing - Condition:

Anticipated Time Schedule

	Land Acquisition	Preliminary Plans	Working Drawings	Construction	Equipment	Occupancy
Year	0	0	0	0	0	0
Estimated Cost	\$0	\$0	\$0	\$0	\$0	\$0

Explain why this project is needed:

FUSION

Project Intent & Scope

Planning

Rancho Santiago Community College District (870)

Rancho Santiago District Office* (872)

District Priority & Project: **0 THIS CAMPUS HAS NO PROJECTS**

Outline of Project Space - Buildings and Remodelings

	Classroom 100s	Laboratory 210-255	Office 300s	Library 400s	AV/TV 530-535	All Other	Total ASF
Project Primary	0	0	0	0	0	0	0
Project Secondary	0	0	0	0	0	0	0
Project Net ASF	0	0	0	0	0	0	0

Project Net Capacity

Classrooms, Classroom Service (Room Use Code 100s)

Summary	Net ASF	ASF per 100 WSCH	Capacity WSCH
Classroom Space	0	0.0	0

Laboratories & Laboratory Service Area (Room Use Codes 210, 215, 220, 225, 230, 235, 255)

TOP Code	Primary Effect			Secondary Effect		
	Net ASF	ASF per 100 WSCH	Capacity WSCH	Net ASF	ASF per 100 WSCH	Capacity WSCH
-						
Summary	Net ASF			Capacity WSCH		
Lab Space	0			0		

Office & Office Service Areas (Room Use Code 300s)

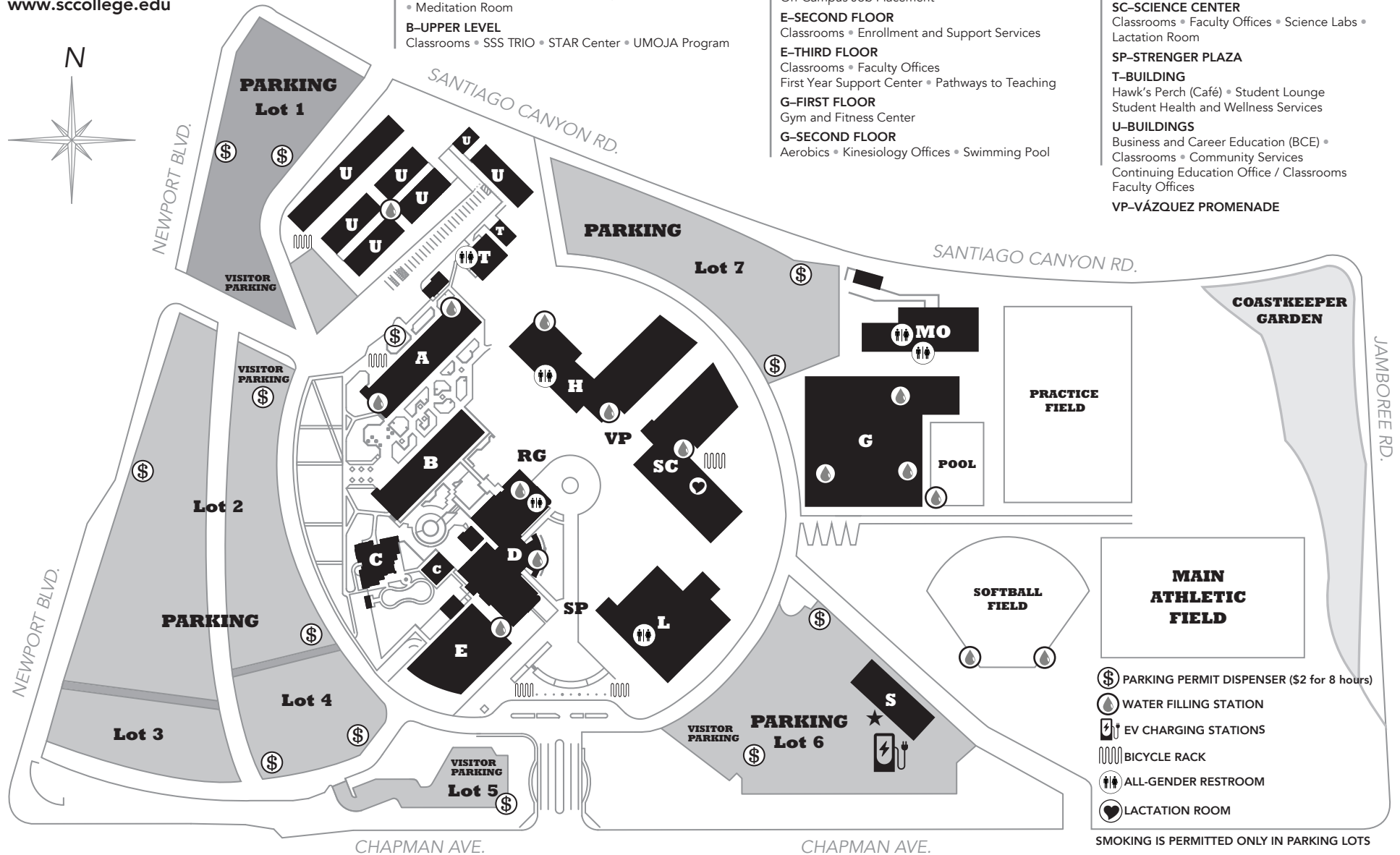
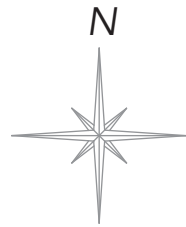
Summary	Net ASF	ASF per FTE	Capacity FTE
Office Space	0	0.0	0.00



Santiago Canyon College

8045 East Chapman Avenue
Orange, CA 92869
714-628-4900

www.sccollege.edu



A-LOWER LEVEL

Bookstore • SCC Outreach • Hawk's Nest Basic Needs Center (A106-108)

A-UPPER LEVEL

Academic Senate Office • Administration
Administrative Services • Associated Student Government
CAMP • Classrooms • Foundation Office • Guardian Scholars
International Students • Office of Student Equity and Success
Publications • Student Life & Leadership
• Upward Bound Math and Science • Veterans

B-LOWER LEVEL

BLACK Center • Classrooms • Faculty Offices
• Meditation Room

B-UPPER LEVEL

Classrooms • SSS TRIO • STAR Center • UMOJA Program

C-BUILDING

Child Development Center

D-FIRST FLOOR

Counseling & Career Development Center •
Classrooms • Faculty Offices • Transfer Success Center

D-SECOND FLOOR

Math Success Center • Faculty Offices • Classrooms

E-FIRST FLOOR

Admissions • CalWORKs • CARE • Cashier
Financial Aid • EOPS • Disabled Students Program
Graduation Office • Photo ID • Scholarships
On-Campus Job Placement

E-SECOND FLOOR

Classrooms • Enrollment and Support Services

E-THIRD FLOOR

Classrooms • Faculty Offices
First Year Support Center • Pathways to Teaching

G-FIRST FLOOR

Gym and Fitness Center

G-SECOND FLOOR

Aerobics • Kinesiology Offices • Swimming Pool

H-HUMANITIES BUILDING

Classrooms • Faculty Offices
Information Technology • Language Lab • Media
Systems Office • Writing Center

L-LIBRARY

Distance Education • Institutional Effectiveness &
Research • Instructional Design Center

MO-MAINTENANCE & OPERATIONS

District Warehouse

RG-ROSE GARDEN

S-SECURITY & CAMPUS SAFETY ★

SC-SCIENCE CENTER
Classrooms • Faculty Offices • Science Labs •
Lactation Room

SP-STRENGER PLAZA

T-BUILDING
Hawk's Perch (Café) • Student Lounge
Student Health and Wellness Services

U-BUILDINGS

Business and Career Education (BCE) •
Classrooms • Community Services
Continuing Education Office / Classrooms
Faculty Offices

VP-VÁZQUEZ PROMENADE

- Ⓢ PARKING PERMIT DISPENSER (\$2 for 8 hours)
- 💧 WATER FILLING STATION
- 🔌 EV CHARGING STATIONS
- 🚲 BICYCLE RACK
- ♿ ALL-GENDER RESTROOM
- 👶 LACTATION ROOM

SMOKING IS PERMITTED ONLY IN PARKING LOTS

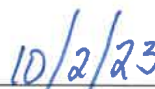
Certification of Inventory for Fiscal Year: 2023 - 2024

Campus Name: **Santiago Canyon College**
Certified ASF: **299,940**
Certified OGSF: **421,768**

District Approval



Authorized Signature



Date

Marvin Martinez, Chancellor

Printed Name

State Approval



Authorized Signature

5/6/2024

Date

Included:

(2) Signed Copies of Report 17 Certification Sheet if the submission was not certified and submitted electronically by the CBO.

FUSION

Campus Capacity/Load Ratios

Planning

Rancho Santiago Community College District (870)

Santiago Canyon College (873)

Campus Lecture Capacity/Load Ratio

No. Project	Lect ASF	WSCH	Occupancy	2025-26	2026-27	2027-28	2028-29	2029-30	2030-31	2031-32
11 SCIENCE CENTER MODERNIZATION/WATER UTILITIES SCIENCES & HUMANITIES BUILDING										
	-3,578	-5,670	2029-30					114,476		
Santiago Canyon College								223%		
14 RECONFIGURATION/MODERNIZATION OF BUILDING E										
	0	0	2030-31						114,476	
Santiago Canyon College									224%	
16 CAREER TECHNOLOGY EDUCATION BUILDING										
	-4,981	-7,894	2032-33							
Santiago Canyon College										
Lecture Summary / Totals				2025-26	2026-27	2027-28	2028-29	2029-30	2030-31	2031-32
Lecture ASF	Actual*/Projected WSCH			51,889	51,743	51,598	51,453	51,308	51,053	50,801
75,812	Cumulative Capacity			120,146	120,146	120,146	120,146	120,146	114,476	114,476
	Capacity/Load Ratio			232%	232%	233%	234%	234%	224%	225%

FUSION

Campus Capacity/Load Ratios

Planning

Rancho Santiago Community College District (870)

Santiago Canyon College (873)

Campus Lab Capacity/Load Ratio

No. Project	Lab ASF	WSCH	Occupancy	2025-26	2026-27	2027-28	2028-29	2029-30	2030-31	2031-32
11 SCIENCE CENTER MODERNIZATION/WATER UTILITIES SCIENCES & HUMANITIES BUILDING										
	3,578	1,457	2029-30					21,775		
Santiago Canyon College								45%		
14 RECONFIGURATION/MODERNIZATION OF BUILDING E										
	0	0	2030-31						21,775	
Santiago Canyon College								45%		
16 CAREER TECHNOLOGY EDUCATION BUILDING										
	12,999	4,979	2032-33							
Santiago Canyon College										
Lab Summary / Totals				2025-26	2026-27	2027-28	2028-29	2029-30	2030-31	2031-32
Lab ASF	Actual*/Projected WSCH			48,776	48,639	48,502	48,366	48,229	47,990	47,753
45,646	Cumulative Capacity			20,318	20,318	20,318	20,318	20,318	21,775	21,775
	Capacity/Load Ratio			42%	42%	42%	42%	42%	45%	46%

FUSION

Campus Capacity/Load Ratios

Planning

Rancho Santiago Community College District (870)

Santiago Canyon College (873)

Campus Office Capacity/Load Ratio

No. Project	Off ASF	FTE	Occupancy	2025-26	2026-27	2027-28	2028-29	2029-30	2030-31	2031-32
14 RECONFIGURATION/MODERNIZATION OF BUILDING E										
	0	0	2030-31						274	
Santiago Canyon College									119%	
16 CAREER TECHNOLOGY EDUCATION BUILDING										
	1,106	6	2032-33							
Santiago Canyon College										
Office Summary / Totals				2025-26	2026-27	2027-28	2028-29	2029-30	2030-31	2031-32
Office ASF	Actual*/Projected FTE			199	206	212	218	224	230	236
47,895	Cumulative Capacity			274	274	274	274	274	274	274
	Capacity/Load Ratio			138%	133%	129%	126%	122%	119%	116%

FUSION

Campus Capacity/Load Ratios

Planning

Rancho Santiago Community College District (870)

Santiago Canyon College (873)

Campus Library Capacity/Load Ratio

No. Project	Lib ASF	Occupancy	2025-26	2026-27	2027-28	2028-29	2029-30	2030-31	2031-32
14 RECONFIGURATION/MODERNIZATION OF BUILDING E									
	0	2030-31						50,916	
Santiago Canyon College								118%	
16 CAREER TECHNOLOGY EDUCATION BUILDING									
	-3,241	2032-33							
Santiago Canyon College									
Library Summary / Totals			2025-26	2026-27	2027-28	2028-29	2029-30	2030-31	2031-32
Library ASF	Actual*/Projected ASF		44,092	43,915	43,738	43,562	43,387	43,213	43,040
50,916	Cumulative Capacity		50,916	50,916	50,916	50,916	50,916	50,916	50,916
	Capacity/Load Ratio		115%	116%	116%	117%	117%	118%	118%

FUSION

Campus Capacity/Load Ratios

Planning

Rancho Santiago Community College District (870)

Santiago Canyon College (873)

Campus AV/TV Capacity/Load Ratio

No. Project	AV/TV ASF Occupancy	2025-26	2026-27	2027-28	2028-29	2029-30	2030-31	2031-32	
AV/TV Summary / Totals									
	AV/TV ASF	Actual*/Projected ASF	11,290	11,275	11,260	11,245	11,231	11,216	11,201
	376	Cumulative Capacity	376	376	376	376	376	376	376
		Capacity/Load Ratio	3%	3%	3%	3%	3%	3%	3%

FUSION

Load Distribution & Staff Forecast

Planning

Rancho Santiago Community College District (870)
Santiago Canyon College (873)

Campus Load Distribution

	Instructional Staff FTE	Total Campus WSCH	Off-Campus WSCH	On-Campus WSCH	P.E. Laboratory WSCH	On-Campus Lecture WSCH	On-Campus Laboratory
Actual Fall							
2022	167	106,961	14,857	92,104	2,349	32,706	57,049
2023	185	101,055	15,542	85,513	1,668	29,964	53,882
Forecast							
2024	192	121,011	16,942	104,069	3,122	52,035	48,913
2025	199	120,672	16,894	103,778	3,113	51,889	48,776
2026	206	120,333	16,847	103,486	3,105	51,743	48,639
2027	212	119,995	16,799	103,196	3,096	51,598	48,502
2028	218	119,657	16,752	102,905	3,087	51,453	48,366
2029	224	119,320	16,705	102,615	3,078	51,308	48,229
2030	230	118,729	16,622	102,107	3,063	51,053	47,990

FUSION

Load Distribution & Staff Forecast

Planning

Rancho Santiago Community College District (870) Santiago Canyon College (873)

FTE Instruction Staff Worksheet - Fall 2024

College Instructional Staff, Fall Term. Included are all certificated staff for day, extended day, and adult education except those whose office is located off-campus.

Staff Type (a)	Total Certificated Instructional and Statutory Staff FTE (b)	Non-Instructional Portion of FTE (c)	Net Total Instructional and Statutory Staff FTE (b-c)
Instructor	142	0	142
Counselor Include certified special program coordinators, economic opportunity program, coordinators, statutory and Title 5 required staff, et. al.	25	0	25
Department Administrator	25	0	25
Librarian Include certificated director of audio/visual, et. al.	6	6	0
Institutional Administrator Include certificated persons with responsibilities covering the entire institution, such as Superintendent, Assistant Superintendent, President, Dean of Instruction, Director of Data Processing, et. al.	4	4	0
Projected 2024 Totals	202	10	192

Column (b) is the total number of Column (a) distributed to categories

Column (c) is the fraction of time express as Full-Time Equivalentents devoted to noninstructional work.

Counselors, department administrators, and statutorily required staff are counted as if they had no noninstructional duties.

FUSION

Load Distribution & Staff Forecast

Planning

Rancho Santiago Community College District (870) Santiago Canyon College (873)

FTE Instruction Staff Worksheet - Fall 2025

College Instructional Staff, Fall Term. Included are all certificated staff for day, extended day, and adult education except those whose office is located off-campus.

Staff Type (a)	Total Certificated Instructional and Statutory Staff FTE (b)	Non-Instructional Portion of FTE (c)	Net Total Instructional and Statutory Staff FTE (b-c)
Instructor	148	0	148
Counselor Include certified special program coordinators, economic opportunity program, coordinators, statutory and Title 5 required staff, et. al.	25	0	25
Department Administrator	26	0	26
Librarian Include certificated director of audio/visual, et. al.	6	6	0
Institutional Administrator Include certificated persons with responsibilities covering the entire institution, such as Superintendent, Assistant Superintendent, President, Dean of Instruction, Director of Data Processing, et. al.	4	4	0
Projected 2025 Totals	209	10	199

Column (b) is the total number of Column (a) distributed to categories

Column (c) is the fraction of time express as Full-Time Equivalentents devoted to noninstructional work.

Counselors, department administrators, and statutorily required staff are counted as if they had no noninstructional duties.

FUSION

Load Distribution & Staff Forecast

Planning

Rancho Santiago Community College District (870) Santiago Canyon College (873)

FTE Instruction Staff Worksheet - Fall 2026

College Instructional Staff, Fall Term. Included are all certificated staff for day, extended day, and adult education except those whose office is located off-campus.

Staff Type (a)	Total Certificated Instructional and Statutory Staff FTE (b)	Non-Instructional Portion of FTE (c)	Net Total Instructional and Statutory Staff FTE (b-c)
Instructor	154	0	154
Counselor Include certified special program coordinators, economic opportunity program, coordinators, statutory and Title 5 required staff, et. al.	26	0	26
Department Administrator	26	0	26
Librarian Include certificated director of audio/visual, et. al.	6	6	0
Institutional Administrator Include certificated persons with responsibilities covering the entire institution, such as Superintendent, Assistant Superintendent, President, Dean of Instruction, Director of Data Processing, et. al.	4	4	0
Projected 2026 Totals	216	10	206

Column (b) is the total number of Column (a) distributed to categories

Column (c) is the fraction of time express as Full-Time Equivalentents devoted to noninstructional work.

Counselors, department administrators, and statutorily required staff are counted as if they had no noninstructional duties.

FUSION

Load Distribution & Staff Forecast

Planning

Rancho Santiago Community College District (870) Santiago Canyon College (873)

FTE Instruction Staff Worksheet - Fall 2027

College Instructional Staff, Fall Term. Included are all certificated staff for day, extended day, and adult education except those whose office is located off-campus.

Staff Type (a)	Total Certificated Instructional and Statutory Staff FTE (b)	Non-Instructional Portion of FTE (c)	Net Total Instructional and Statutory Staff FTE (b-c)
Instructor	160	0	160
Counselor Include certified special program coordinators, economic opportunity program, coordinators, statutory and Title 5 required staff, et. al.	26	0	26
Department Administrator	26	0	26
Librarian Include certificated director of audio/visual, et. al.	6	6	0
Institutional Administrator Include certificated persons with responsibilities covering the entire institution, such as Superintendent, Assistant Superintendent, President, Dean of Instruction, Director of Data Processing, et. al.	4	4	0
Projected 2027 Totals	222	10	212

Column (b) is the total number of Column (a) distributed to categories

Column (c) is the fraction of time express as Full-Time Equivalentents devoted to noninstructional work.

Counselors, department administrators, and statutorily required staff are counted as if they had no noninstructional duties.

FUSION

Load Distribution & Staff Forecast

Planning

Rancho Santiago Community College District (870) Santiago Canyon College (873)

FTE Instruction Staff Worksheet - Fall 2028

College Instructional Staff, Fall Term. Included are all certificated staff for day, extended day, and adult education except those whose office is located off-campus.

Staff Type (a)	Total Certificated Instructional and Statutory Staff FTE (b)	Non-Instructional Portion of FTE (c)	Net Total Instructional and Statutory Staff FTE (b-c)
Instructor	166	0	166
Counselor Include certified special program coordinators, economic opportunity program, coordinators, statutory and Title 5 required staff, et. al.	26	0	26
Department Administrator	26	0	26
Librarian Include certificated director of audio/visual, et. al.	6	6	0
Institutional Administrator Include certificated persons with responsibilities covering the entire institution, such as Superintendent, Assistant Superintendent, President, Dean of Instruction, Director of Data Processing, et. al.	4	4	0
Projected 2028 Totals	228	10	218

Column (b) is the total number of Column (a) distributed to categories

Column (c) is the fraction of time express as Full-Time Equivalentents devoted to noninstructional work.

Counselors, department administrators, and statutorily required staff are counted as if they had no noninstructional duties.

FUSION

Load Distribution & Staff Forecast

Planning

Rancho Santiago Community College District (870) Santiago Canyon College (873)

FTE Instruction Staff Worksheet - Fall 2029

College Instructional Staff, Fall Term. Included are all certificated staff for day, extended day, and adult education except those whose office is located off-campus.

Staff Type (a)	Total Certificated Instructional and Statutory Staff FTE (b)	Non-Instructional Portion of FTE (c)	Net Total Instructional and Statutory Staff FTE (b-c)
Instructor	172	0	172
Counselor Include certified special program coordinators, economic opportunity program, coordinators, statutory and Title 5 required staff, et. al.	26	0	26
Department Administrator	26	0	26
Librarian Include certificated director of audio/visual, et. al.	6	6	0
Institutional Administrator Include certificated persons with responsibilities covering the entire institution, such as Superintendent, Assistant Superintendent, President, Dean of Instruction, Director of Data Processing, et. al.	4	4	0
Projected 2029 Totals	234	10	224

Column (b) is the total number of Column (a) distributed to categories

Column (c) is the fraction of time express as Full-Time Equivalentents devoted to noninstructional work.

Counselors, department administrators, and statutorily required staff are counted as if they had no noninstructional duties.

FUSION

Load Distribution & Staff Forecast

Planning

Rancho Santiago Community College District (870) Santiago Canyon College (873)

FTE Instruction Staff Worksheet - Fall 2030

College Instructional Staff, Fall Term. Included are all certificated staff for day, extended day, and adult education except those whose office is located off-campus.

Staff Type (a)	Total Certificated Instructional and Statutory Staff FTE (b)	Non-Instructional Portion of FTE (c)	Net Total Instructional and Statutory Staff FTE (b-c)
Instructor	178	0	178
Counselor Include certified special program coordinators, economic opportunity program, coordinators, statutory and Title 5 required staff, et. al.	26	0	26
Department Administrator	26	0	26
Librarian Include certificated director of audio/visual, et. al.	6	6	0
Institutional Administrator Include certificated persons with responsibilities covering the entire institution, such as Superintendent, Assistant Superintendent, President, Dean of Instruction, Director of Data Processing, et. al.	4	4	0
Projected 2030 Totals	240	10	230

Column (b) is the total number of Column (a) distributed to categories

Column (c) is the fraction of time express as Full-Time Equivalentents devoted to noninstructional work.

Counselors, department administrators, and statutorily required staff are counted as if they had no noninstructional duties.

FUSION

Cumulative Sum of Existing & Proposed Space (2025-2031)

Planning

Rancho Santiago Community College District (870)
Santiago Canyon College (873)

Priority & Year of Occupancy (a)	Classroom 100's (b)	Laboratory 200's (c)	Office 300's (d)	Library 400's (e)	AV Radio TV 530-535 (f)	P.E. 520-525 (g)	Assembly 610 & 615 (h)	Inactive 050-070 (i)	All Other Areas (j)	Total ASF (k)
Total ASF	75,812	45,646	47,895	50,916	376	41,054	2,166	902	35,671	300,438
11	2029	SCIENCE CENTER MODERNIZATION/WATER UTILITIES SCIENCES & HUMANITIES BUILDING								
	-3,578	3,578	0	0	0	0	0	0	0	0
	72,234	49,224	47,895	50,916	376	41,054	2,166	902	35,671	300,438
14	2030	RECONFIGURATION/MODERNIZATION OF BUILDING E								
	0	0	0	0	0	0	0	0	0	0
	72,234	49,224	47,895	50,916	376	41,054	2,166	902	35,671	300,438
Total Existing and Proposed Space	72,234	49,224	47,895	50,916	376	41,054	2,166	902	35,671	300,438

FUSION**Capacity of Net Existing On-Campus ASF**

Planning

Rancho Santiago Community College District (870)**Santiago Canyon College (873)****Classrooms, Classroom Service (Room Use Code 100s)**

Summary	Total Net ASF	ASF per 100 WSCH	Total Capacity WSCH
Classroom Space	75,812	63.1	120,146

Laboratories & Laboratory Service Area (Room Use Codes 210, 215, 220, 225, 230, 235, 255)

TOP Code	Net ASF	ASF per 100 WSCH	Capacity WSCH
0099 - General Assignment	1,244	257.0	484
0400 - Biological Sciences	506	235.0	215
0401 - Biology, General	5,684	235.0	2,419
0403 - Microbiology	2,060	235.0	877
0407 - Zoology, General	1,853	235.0	789
0410 - Anatomy and Physiology	1,792	235.0	763
0514 - Office Technology/Office Computer Applications	2,053	128.0	1,604
0701 - Information Technology, General	1,848	171.0	1,081
0957 - Civil and Construction Management Technology	529	321.0	165
1001 - Fine Arts, General	252	257.0	98
1002 - Art (Painting, Drawing and Sculpture)	3,797	257.0	1,477
1004 - Music	965	257.0	375
1030 - Graphic Arts and Design	1,241	257.0	483
1101 - Foreign Languages, General	1,075	150.0	717
1601 - Library Science, General	1,322	150.0	881
1902 - Physics, General	3,163	257.0	1,231
1905 - Chemistry, General	8,462	257.0	3,293
1911 - Astronomy	1,572	257.0	612
1914 - Geology	2,472	257.0	962
1930 - Earth Science	1,588	257.0	618
2202 - Anthropology	704	150.0	469
2207 - Political Science	495	150.0	330
4999 - Other Interdisciplinary Studies	969	257.0	377
Summary	Total Net ASF	ASF per 100 WSCH	Total Capacity WSCH
Lab Space	45,646	224.7	20,318

Office & Office Service Areas (Room Use Code 300s)

Summary	Total Net ASF	ASF per FTE	Total Capacity FTE
Office Space	47,895	175.0	274

FUSION

Project Intent & Scope

Planning

Rancho Santiago Community College District (870) Santiago Canyon College (873)

District Priority & Project: **1 BARRIER REMOVAL/CAMPUS ENTRANCE SITE IMPROVEMENTS PHASE 1**

Project Type: Reconstruction

Total Estimated Cost: \$3,400,000

Anticipated Source(s) of Funds: Non-State

Type of Construction:

Seismic Retrofit:

If Existing - Age:

If Existing - Condition:

Anticipated Time Schedule

	Land Acquisition	Preliminary Plans	Working Drawings	Construction	Equipment	Occupancy
Year	0	2021	2021	2022	0	2023-24
Estimated Cost	\$0	\$60,000	\$80,000	\$3,260,000	\$0	

Explain why this project is needed:

This project will reconstruct the campus entrance, remove several architectural barriers and upgrade the site with many improvements at Santiago Canyon College.

FUSION

Project Intent & Scope

Planning

Rancho Santiago Community College District (870) Santiago Canyon College (873)

District Priority & Project: **1 BARRIER REMOVAL/CAMPUS ENTRANCE SITE IMPROVEMENTS PHASE 1**

Outline of Project Space - Buildings and Remodelings

	Classroom 100s	Laboratory 210-255	Office 300s	Library 400s	AV/TV 530-535	All Other	Total ASF
Project Primary	0	0	0	0	0	0	0
Project Secondary	0	0	0	0	0	0	0
Project Net ASF	0	0	0	0	0	0	0

Project Net Capacity

Classrooms, Classroom Service (Room Use Code 100s)

Summary	Net ASF	ASF per 100 WSCH	Capacity WSCH
Classroom Space	0	0.0	0

Laboratories & Laboratory Service Area (Room Use Codes 210, 215, 220, 225, 230, 235, 255)

TOP Code	Primary Effect			Secondary Effect		
	Net ASF	ASF per 100 WSCH	Capacity WSCH	Net ASF	ASF per 100 WSCH	Capacity WSCH
-						
Summary	Net ASF			Capacity WSCH		
Lab Space				0		0

Office & Office Service Areas (Room Use Code 300s)

Summary	Net ASF	ASF per FTE	Capacity FTE
Office Space	0	0.0	0.00

FUSION

Project Intent & Scope

Planning

Rancho Santiago Community College District (870)
Santiago Canyon College (873)

District Priority & Project: **7 SOCCER PATH OF TRAVEL IMPROVEMENTS**

Project Type: Reconstruction
 Total Estimated Cost: \$1,181,530
 Anticipated Source(s) of Funds: Non-State
 Type of Construction:
 Seismic Retrofit:
 If Existing - Age:
 If Existing - Condition:

Anticipated Time Schedule

	Land Acquisition	Preliminary Plans	Working Drawings	Construction	Equipment	Occupancy
Year	0	2023	2023	2024	0	2025-26
Estimated Cost	\$0	\$25,000	\$35,530	\$1,121,000	\$0	

Explain why this project is needed:

This project will upgrade the path of travel for the soccer area on the Santiago College campus.

FUSION

Project Intent & Scope

Planning

Rancho Santiago Community College District (870) Santiago Canyon College (873)

District Priority & Project: 7 SOCCER PATH OF TRAVEL IMPROVEMENTS

Outline of Project Space - Buildings and Remodelings

	Classroom 100s	Laboratory 210-255	Office 300s	Library 400s	AV/TV 530-535	All Other	Total ASF
Project Primary	0	0	0	0	0	0	0
Project Secondary	0	0	0	0	0	0	0
Project Net ASF	0	0	0	0	0	0	0

Project Net Capacity

Classrooms, Classroom Service (Room Use Code 100s)

Summary	Net ASF	ASF per 100 WSCH	Capacity WSCH
Classroom Space	0	0.0	0

Laboratories & Laboratory Service Area (Room Use Codes 210, 215, 220, 225, 230, 235, 255)

TOP Code	Primary Effect			Secondary Effect		
	Net ASF	ASF per 100 WSCH	Capacity WSCH	Net ASF	ASF per 100 WSCH	Capacity WSCH
-						
Summary	Net ASF			Capacity WSCH		
Lab Space	0			0		

Office & Office Service Areas (Room Use Code 300s)

Summary	Net ASF	ASF per FTE	Capacity FTE
Office Space	0	0.0	0.00

FUSION

Project Intent & Scope

Planning

Rancho Santiago Community College District (870) Santiago Canyon College (873)

District Priority & Project: **8 BARRIER REMOVAL/CAMPUS ENTRANCE SITE IMPROVEMENTS PHASE 2**

Project Type: Reconstruction

Total Estimated Cost: \$13,000,000

Anticipated Source(s) of Funds: Non-State

Type of Construction:

Seismic Retrofit:

If Existing - Age:

If Existing - Condition:

Anticipated Time Schedule

	Land Acquisition	Preliminary Plans	Working Drawings	Construction	Equipment	Occupancy
Year	0	2022	2022	2024	2024	2025-26
Estimated Cost	\$0	\$200,000	\$300,000	\$12,500,000	\$0	

Explain why this project is needed:

This project will reconstruct the campus entrance, remove several architectural barriers and upgrade the site with many improvements at Santiago Canyon College.

FUSION

Project Intent & Scope

Planning

Rancho Santiago Community College District (870) Santiago Canyon College (873)

District Priority & Project: **8 BARRIER REMOVAL/CAMPUS ENTRANCE SITE IMPROVEMENTS PHASE 2**

Outline of Project Space - Buildings and Remodelings

	Classroom 100s	Laboratory 210-255	Office 300s	Library 400s	AV/TV 530-535	All Other	Total ASF
Project Primary	0	0	0	0	0	0	0
Project Secondary	0	0	0	0	0	0	0
Project Net ASF	0	0	0	0	0	0	0

Project Net Capacity

Classrooms, Classroom Service (Room Use Code 100s)

Summary	Net ASF	ASF per 100 WSCH	Capacity WSCH
Classroom Space	0	0.0	0

Laboratories & Laboratory Service Area (Room Use Codes 210, 215, 220, 225, 230, 235, 255)

TOP Code	Primary Effect			Secondary Effect		
	Net ASF	ASF per 100 WSCH	Capacity WSCH	Net ASF	ASF per 100 WSCH	Capacity WSCH
-						
Summary	Net ASF			Capacity WSCH		
Lab Space				0		0

Office & Office Service Areas (Room Use Code 300s)

Summary	Net ASF	ASF per FTE	Capacity FTE
Office Space	0	0.0	0.00

FUSION

Project Intent & Scope

Planning

**Rancho Santiago Community College District (870)
Santiago Canyon College (873)**

District Priority & Project: **11 SCIENCE CENTER MODERNIZATION/WATER UTILITIES SCIENCES & HUMANITIES BUILDING**

Project Type: Infrastructure

Total Estimated Cost: \$27,094,475

Anticipated Source(s) of Funds: Non-State

Type of Construction:

Seismic Retrofit:

If Existing - Age:

If Existing - Condition:

Anticipated Time Schedule

	Land Acquisition	Preliminary Plans	Working Drawings	Construction	Equipment	Occupancy
Year	0	2024	2025	2027	0	2029-30
Estimated Cost	\$0	\$1,000,000	\$2,000,000	\$24,094,475	\$0	

Explain why this project is needed:

This project will convert two existing classrooms in Science Center for the water sciences and biotechnology/chemistry labs, and general science lecture in Humanities building.

FUSION

Project Intent & Scope

Planning

Rancho Santiago Community College District (870) Santiago Canyon College (873)

District Priority & Project: **11 SCIENCE CENTER MODERNIZATION/WATER UTILITIES SCIENCES & HUMANITIES BUILDING**

Outline of Project Space - Buildings and Remodelings

	Classroom 100s	Laboratory 210-255	Office 300s	Library 400s	AV/TV 530-535	All Other	Total ASF
Project Primary	0	3,578	0	0	0	0	3,578
Project Secondary	-3,578	0	0	0	0	0	-3,578
Project Net ASF	-3,578	3,578	0	0	0	0	0

Project Net Capacity

Classrooms, Classroom Service (Room Use Code 100s)

Summary	Net ASF	ASF per 100 WSCH	Capacity WSCH
Classroom Space	-3,578	63.1	-5,670

Laboratories & Laboratory Service Area (Room Use Codes 210, 215, 220, 225, 230, 235, 255)

TOP Code	Primary Effect			Secondary Effect		
	Net ASF	ASF per 100 WSCH	Capacity WSCH	Net ASF	ASF per 100 WSCH	Capacity WSCH
-						
Summary	Net ASF			Capacity WSCH		
Lab Space				3,578		1,457

Office & Office Service Areas (Room Use Code 300s)

Summary	Net ASF	ASF per FTE	Capacity FTE
Office Space	0	0.0	0.00

FUSION

Project Intent & Scope

Planning

Rancho Santiago Community College District (870) Santiago Canyon College (873)

District Priority & Project: **14 RECONFIGURATION/MODERNIZATION OF BUILDING E**

Project Type: Reconstruction

Total Estimated Cost: \$34,835,446

Anticipated Source(s) of Funds: Non-State

Type of Construction:

Seismic Retrofit:

If Existing - Age:

If Existing - Condition:

Anticipated Time Schedule

	Land Acquisition	Preliminary Plans	Working Drawings	Construction	Equipment	Occupancy
Year	0	2026	2026	2028	2028	2030-31
Estimated Cost	\$0	\$1,200,000	\$2,100,000	\$29,035,446	\$2,500,000	

Explain why this project is needed:

This project will modernize and reconfigure Building E on the Santiago Canyon campus.

FUSION

Project Intent & Scope

Planning

Rancho Santiago Community College District (870) Santiago Canyon College (873)

District Priority & Project: **14 RECONFIGURATION/MODERNIZATION OF BUILDING E**

Outline of Project Space - Buildings and Remodelings

	Classroom 100s	Laboratory 210-255	Office 300s	Library 400s	AV/TV 530-535	All Other	Total ASF
Project Primary	7,776	969	7,242	4,753	0	2,593	23,333
Project Secondary	-7,776	-969	-7,242	-4,753	0	-2,593	-23,333
Project Net ASF	0	0	0	0	0	0	0

Project Net Capacity

Classrooms, Classroom Service (Room Use Code 100s)

Summary	Net ASF	ASF per 100 WSCH	Capacity WSCH
Classroom Space	0	0.0	0

Laboratories & Laboratory Service Area (Room Use Codes 210, 215, 220, 225, 230, 235, 255)

TOP Code	Primary Effect			Secondary Effect		
	Net ASF	ASF per 100 WSCH	Capacity WSCH	Net ASF	ASF per 100 WSCH	Capacity WSCH
-						
Summary	Net ASF			Capacity WSCH		
Lab Space			0			0

Office & Office Service Areas (Room Use Code 300s)

Summary	Net ASF	ASF per FTE	Capacity FTE
Office Space	0	0.0	0.00

FUSION

Project Intent & Scope

Planning

Rancho Santiago Community College District (870) Santiago Canyon College (873)

District Priority & Project: **16 CAREER TECHNOLOGY EDUCATION BUILDING**

Project Type: Replacement
 Total Estimated Cost: \$166,939,001
 Anticipated Source(s) of Funds: Non-State
 Type of Construction:
 Seismic Retrofit:
 If Existing - Age:
 If Existing - Condition:

Anticipated Time Schedule

	Land Acquisition	Preliminary Plans	Working Drawings	Construction	Equipment	Occupancy
Year	0	2028	2028	2029	2030	2032-33
Estimated Cost	\$0	\$4,000,000	\$6,000,000	\$145,000,000	\$11,939,001	

Explain why this project is needed:

The Career Technology Education (CTE) Building is a new replacement facility for CTE programs that may include: Business, Career & Technical Education, Performing Arts, Music, Dance, American Sign Language, Apprenticeship, Biotechnology, Computer Science, Education, Cinema Studies, Code Enforcement, Construction Management, Criminal Justice, Digital Media Arts, Gemology, Graphic Design, Public Works, Real Estate, Survey/Mapping Sciences, Water Utility Science, Urban Horticulture, and potentially an Observatory on the roof. This facility will replace U Portables and Building B.

FUSION

Project Intent & Scope

Planning

Rancho Santiago Community College District (870)
Santiago Canyon College (873)

District Priority & Project: **16 CAREER TECHNOLOGY EDUCATION BUILDING**

Outline of Project Space - Buildings and Remodelings

	Classroom 100s	Laboratory 210-255	Office 300s	Library 400s	AV/TV 530-535	All Other	Total ASF
Project Primary	8,000	22,000	3,000	0	0	12,000	45,000
Project Secondary	-12,981	-9,001	-1,894	-3,241	0	-2,149	-29,266
Project Net ASF	-4,981	12,999	1,106	-3,241	0	9,851	15,734

Project Net Capacity

Classrooms, Classroom Service (Room Use Code 100s)

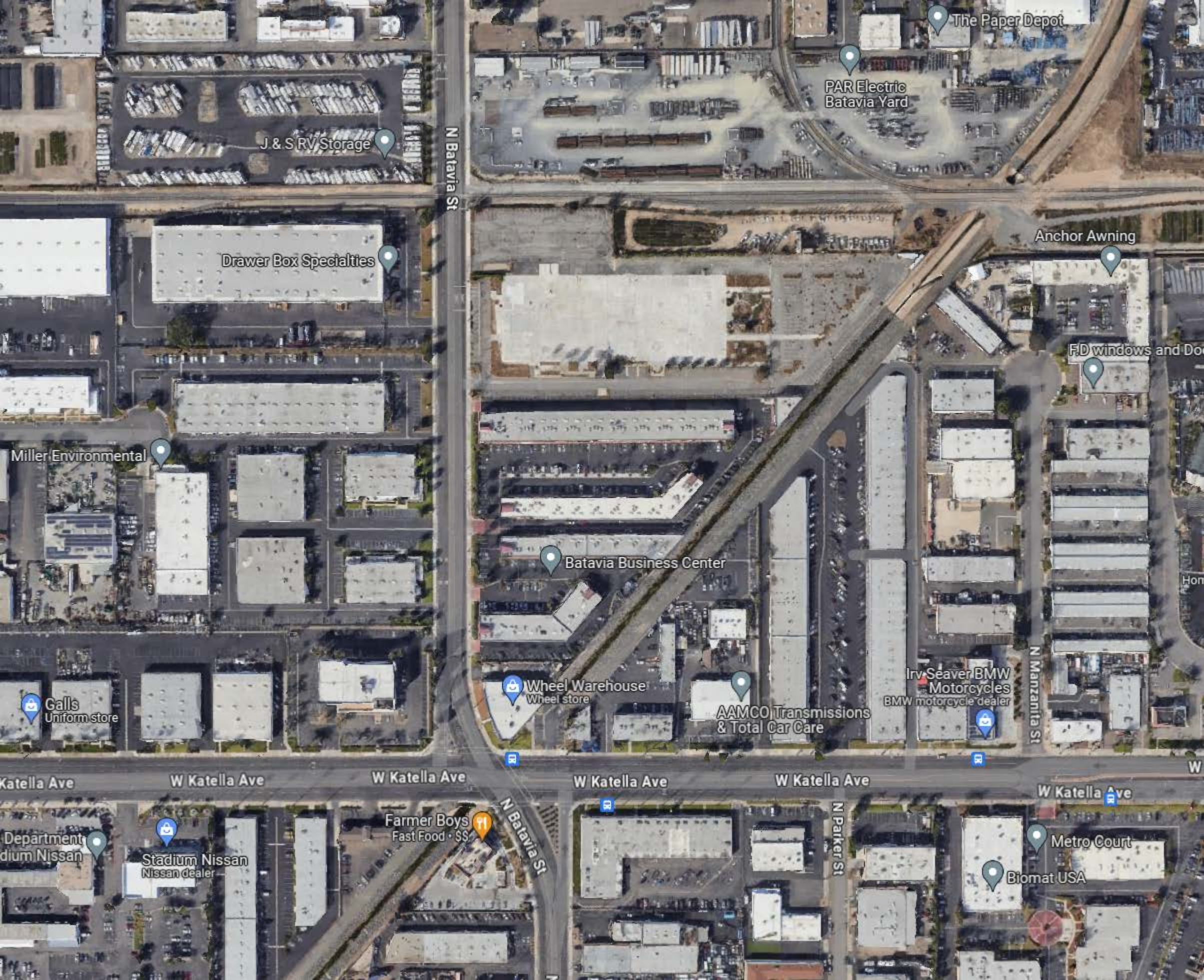
Summary	Net ASF	ASF per 100 WSCH	Capacity WSCH
Classroom Space	-4,981	63.1	-7,894

Laboratories & Laboratory Service Area (Room Use Codes 210, 215, 220, 225, 230, 235, 255)

TOP Code	Primary Effect			Secondary Effect		
	Net ASF	ASF per 100 WSCH	Capacity WSCH	Net ASF	ASF per 100 WSCH	Capacity WSCH
-						
Summary	Net ASF			Capacity WSCH		
Lab Space			12,999			4,979

Office & Office Service Areas (Room Use Code 300s)

Summary	Net ASF	ASF per FTE	Capacity FTE
Office Space	1,106	175.0	6.32



The Paper Depot

PAR Electric
Batavia Yard

J & S RV Storage

N Batavia St

Drawer Box Specialties

Anchor Awning

FD windows and Doors

Miller Environmental

Batavia Business Center

Galls
Uniform store

Wheel Warehouse
Wheel store

AAMCO Transmissions
& Total Car Care

Irv Seaver BMW
Motorcycles
BMW motorcycle dealer

N Manzanita St

Katella Ave

W Katella Ave

W Katella Ave

W Katella Ave

W Katella Ave

W

Department
Stadium Nissan

Stadium Nissan
Nissan dealer

Farmer Boys
Fast Food • \$\$

N Batavia St

N Parker St

Metro Court

Biomat USA

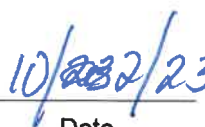
Certification of Inventory for Fiscal Year: 2023 - 2024

Campus Name: **Orange Education Center**
Certified ASF: **29,780**
Certified OGSF: **35,854**

District Approval



Authorized Signature



Date

Marvin Martinez, Chancellor

Printed Name

State Approval



Authorized Signature

5/6/2024

Date

Included:

(2) Signed Copies of Report 17 Certification Sheet if the submission was not certified and submitted electronically by the CBO.

FUSION

Campus Capacity/Load Ratios

Planning

Rancho Santiago Community College District (870)

Orange Education Center (874)

Campus Lecture Capacity/Load Ratio

No. Project	Lect ASF	WSCH	Occupancy	2025-26	2026-27	2027-28	2028-29	2029-30	2030-31	2031-32
10 OEC REMEDIATION AND REPLACEMENT										
	0	0	2029-30					25,853		
Orange Education Center								569%		
Lecture Summary / Totals				2025-26	2026-27	2027-28	2028-29	2029-30	2030-31	2031-32
Lecture ASF	Actual*/Projected WSCH			4,594	4,581	4,568	4,555	4,542	4,520	4,497
16,313	Cumulative Capacity			25,853	25,853	25,853	25,853	25,853	25,853	25,853
	Capacity/Load Ratio			563%	564%	566%	568%	569%	572%	575%

FUSION

Campus Capacity/Load Ratios

Planning

Rancho Santiago Community College District (870)

Orange Education Center (874)

Campus Lab Capacity/Load Ratio

No. Project	Lab ASF	WSCH	Occupancy	2025-26	2026-27	2027-28	2028-29	2029-30	2030-31	2031-32
10 OEC REMEDIATION AND REPLACEMENT										
	0	0	2029-30					884		
Orange Education Center								17%		
Lab Summary / Totals				2025-26	2026-27	2027-28	2028-29	2029-30	2030-31	2031-32
Lab ASF	Actual*/Projected WSCH			5,393	5,378	5,363	5,347	5,332	5,306	5,280
2,273	Cumulative Capacity			884	884	884	884	884	884	884
	Capacity/Load Ratio			16%	16%	16%	17%	17%	17%	17%

FUSION

Campus Capacity/Load Ratios

Planning

Rancho Santiago Community College District (870)

Orange Education Center (874)

Campus Office Capacity/Load Ratio

No. Project	Off ASF	FTE	Occupancy	2025-26	2026-27	2027-28	2028-29	2029-30	2030-31	2031-32
10 OEC REMEDIATION AND REPLACEMENT										
	0	0	2029-30					42		
Orange Education Center								47%		
Office Summary / Totals				2025-26	2026-27	2027-28	2028-29	2029-30	2030-31	2031-32
Office ASF	Actual*/Projected FTE			85	86	87	88	89	90	91
8,422	Cumulative Capacity			42	42	42	42	42	42	42
	Capacity/Load Ratio			49%	49%	48%	48%	47%	47%	46%

FUSION

Campus Capacity/Load Ratios

Planning

Rancho Santiago Community College District (870)

Orange Education Center (874)

Campus AV/TV Capacity/Load Ratio

No. Project	AV/TV ASF Occupancy	2025-26	2026-27	2027-28	2028-29	2029-30	2030-31	2031-32
-------------	---------------------	---------	---------	---------	---------	---------	---------	---------

AV/TV Summary / Totals		2025-26	2026-27	2027-28	2028-29	2029-30	2030-31	2031-32
AV/TV ASF	Actual*/Projected ASF	0	0	0	0	0	0	0
0	Cumulative Capacity	0	0	0	0	0	0	0
	Capacity/Load Ratio							

FUSION

Load Distribution & Staff Forecast

Planning

Rancho Santiago Community College District (870)

Orange Education Center (874)

Campus Load Distribution

	Instructional Staff FTE	Total Campus WSCH	Off-Campus WSCH	On-Campus WSCH	P.E. Laboratory WSCH	On-Campus Lecture WSCH	On-Campus Laboratory
Actual Fall							
2022	61	32,604	11,526	21,078	0	3,139	17,940
2023	87	38,999	12,971	26,028	0	2,879	23,150
Forecast							
2024	84	20,864	10,849	10,015	0	4,607	5,408
2025	85	20,806	10,819	9,987	0	4,594	5,393
2026	86	20,747	10,789	9,958	0	4,581	5,378
2027	87	20,689	10,758	9,931	0	4,568	5,363
2028	88	20,631	10,728	9,903	0	4,555	5,347
2029	89	20,572	10,698	9,874	0	4,542	5,332
2030	90	20,471	10,645	9,826	0	4,520	5,306

FUSION

Load Distribution & Staff Forecast

Planning

Rancho Santiago Community College District (870) Orange Education Center (874)

FTE Instruction Staff Worksheet - Fall 2024

College Instructional Staff, Fall Term. Included are all certificated staff for day, extended day, and adult education except those whose office is located off-campus.

Staff Type (a)	Total Certificated Instructional and Statutory Staff FTE (b)	Non-Instructional Portion of FTE (c)	Net Total Instructional and Statutory Staff FTE (b-c)
Instructor	64	0	64
Counselor Include certified special program coordinators, economic opportunity program, coordinators, statutory and Title 5 required staff, et. al.	7	0	7
Department Administrator	13	0	13
Librarian Include certificated director of audio/visual, et. al.	0	0	0
Institutional Administrator Include certificated persons with responsibilities covering the entire institution, such as Superintendent, Assistant Superintendent, President, Dean of Instruction, Director of Data Processing, et. al.	1	1	0
Projected 2024 Totals	85	1	84

Column (b) is the total number of Column (a) distributed to categories

Column (c) is the fraction of time express as Full-Time Equivalentents devoted to noninstructional work.

Counselors, department administrators, and statutorily required staff are counted as if they had no noninstructional duties.

FUSION

Load Distribution & Staff Forecast

Planning

Rancho Santiago Community College District (870) Orange Education Center (874)

FTE Instruction Staff Worksheet - Fall 2025

College Instructional Staff, Fall Term. Included are all certificated staff for day, extended day, and adult education except those whose office is located off-campus.

Staff Type (a)	Total Certificated Instructional and Statutory Staff FTE (b)	Non-Instructional Portion of FTE (c)	Net Total Instructional and Statutory Staff FTE (b-c)
Instructor	65	0	65
Counselor Include certified special program coordinators, economic opportunity program, coordinators, statutory and Title 5 required staff, et. al.	7	0	7
Department Administrator	13	0	13
Librarian Include certificated director of audio/visual, et. al.	0	0	0
Institutional Administrator Include certificated persons with responsibilities covering the entire institution, such as Superintendent, Assistant Superintendent, President, Dean of Instruction, Director of Data Processing, et. al.	1	1	0
Projected 2025 Totals	86	1	85

Column (b) is the total number of Column (a) distributed to categories

Column (c) is the fraction of time express as Full-Time Equivalentents devoted to noninstructional work.

Counselors, department administrators, and statutorily required staff are counted as if they had no noninstructional duties.

FUSION

Load Distribution & Staff Forecast

Planning

Rancho Santiago Community College District (870) Orange Education Center (874)

FTE Instruction Staff Worksheet - Fall 2026

College Instructional Staff, Fall Term. Included are all certificated staff for day, extended day, and adult education except those whose office is located off-campus.

Staff Type (a)	Total Certificated Instructional and Statutory Staff FTE (b)	Non-Instructional Portion of FTE (c)	Net Total Instructional and Statutory Staff FTE (b-c)
Instructor	66	0	66
Counselor Include certified special program coordinators, economic opportunity program, coordinators, statutory and Title 5 required staff, et. al.	7	0	7
Department Administrator	13	0	13
Librarian Include certificated director of audio/visual, et. al.	0	0	0
Institutional Administrator Include certificated persons with responsibilities covering the entire institution, such as Superintendent, Assistant Superintendent, President, Dean of Instruction, Director of Data Processing, et. al.	1	1	0
Projected 2026 Totals	87	1	86

Column (b) is the total number of Column (a) distributed to categories

Column (c) is the fraction of time express as Full-Time Equivalentents devoted to noninstructional work.

Counselors, department administrators, and statutorily required staff are counted as if they had no noninstructional duties.

FUSION

Load Distribution & Staff Forecast

Planning

Rancho Santiago Community College District (870) Orange Education Center (874)

FTE Instruction Staff Worksheet - Fall 2027

College Instructional Staff, Fall Term. Included are all certificated staff for day, extended day, and adult education except those whose office is located off-campus.

Staff Type (a)	Total Certificated Instructional and Statutory Staff FTE (b)	Non-Instructional Portion of FTE (c)	Net Total Instructional and Statutory Staff FTE (b-c)
Instructor	67	0	67
Counselor Include certified special program coordinators, economic opportunity program, coordinators, statutory and Title 5 required staff, et. al.	7	0	7
Department Administrator	13	0	13
Librarian Include certificated director of audio/visual, et. al.	0	0	0
Institutional Administrator Include certificated persons with responsibilities covering the entire institution, such as Superintendent, Assistant Superintendent, President, Dean of Instruction, Director of Data Processing, et. al.	1	1	0
Projected 2027 Totals	88	1	87

Column (b) is the total number of Column (a) distributed to categories

Column (c) is the fraction of time express as Full-Time Equivalentents devoted to noninstructional work.

Counselors, department administrators, and statutorily required staff are counted as if they had no noninstructional duties.

FUSION

Load Distribution & Staff Forecast

Planning

Rancho Santiago Community College District (870) Orange Education Center (874)

FTE Instruction Staff Worksheet - Fall 2028

College Instructional Staff, Fall Term. Included are all certificated staff for day, extended day, and adult education except those whose office is located off-campus.

Staff Type (a)	Total Certificated Instructional and Statutory Staff FTE (b)	Non-Instructional Portion of FTE (c)	Net Total Instructional and Statutory Staff FTE (b-c)
Instructor	68	0	68
Counselor Include certified special program coordinators, economic opportunity program, coordinators, statutory and Title 5 required staff, et. al.	7	0	7
Department Administrator	13	0	13
Librarian Include certificated director of audio/visual, et. al.	0	0	0
Institutional Administrator Include certificated persons with responsibilities covering the entire institution, such as Superintendent, Assistant Superintendent, President, Dean of Instruction, Director of Data Processing, et. al.	1	1	0
Projected 2028 Totals	89	1	88

Column (b) is the total number of Column (a) distributed to categories

Column (c) is the fraction of time express as Full-Time Equivalentents devoted to noninstructional work.

Counselors, department administrators, and statutorily required staff are counted as if they had no noninstructional duties.

FUSION

Load Distribution & Staff Forecast

Planning

Rancho Santiago Community College District (870) Orange Education Center (874)

FTE Instruction Staff Worksheet - Fall 2029

College Instructional Staff, Fall Term. Included are all certificated staff for day, extended day, and adult education except those whose office is located off-campus.

Staff Type (a)	Total Certificated Instructional and Statutory Staff FTE (b)	Non-Instructional Portion of FTE (c)	Net Total Instructional and Statutory Staff FTE (b-c)
Instructor	69	0	69
Counselor Include certified special program coordinators, economic opportunity program, coordinators, statutory and Title 5 required staff, et. al.	7	0	7
Department Administrator	13	0	13
Librarian Include certificated director of audio/visual, et. al.	0	0	0
Institutional Administrator Include certificated persons with responsibilities covering the entire institution, such as Superintendent, Assistant Superintendent, President, Dean of Instruction, Director of Data Processing, et. al.	1	1	0
Projected 2029 Totals	90	1	89

Column (b) is the total number of Column (a) distributed to categories

Column (c) is the fraction of time express as Full-Time Equivalentents devoted to noninstructional work.

Counselors, department administrators, and statutorily required staff are counted as if they had no noninstructional duties.

FUSION

Load Distribution & Staff Forecast

Planning

Rancho Santiago Community College District (870) Orange Education Center (874)

FTE Instruction Staff Worksheet - Fall 2030

College Instructional Staff, Fall Term. Included are all certificated staff for day, extended day, and adult education except those whose office is located off-campus.

Staff Type (a)	Total Certificated Instructional and Statutory Staff FTE (b)	Non-Instructional Portion of FTE (c)	Net Total Instructional and Statutory Staff FTE (b-c)
Instructor	70	0	70
Counselor Include certified special program coordinators, economic opportunity program, coordinators, statutory and Title 5 required staff, et. al.	7	0	7
Department Administrator	13	0	13
Librarian Include certificated director of audio/visual, et. al.	0	0	0
Institutional Administrator Include certificated persons with responsibilities covering the entire institution, such as Superintendent, Assistant Superintendent, President, Dean of Instruction, Director of Data Processing, et. al.	1	1	0
Projected 2030 Totals	91	1	90

Column (b) is the total number of Column (a) distributed to categories

Column (c) is the fraction of time express as Full-Time Equivalentents devoted to noninstructional work.

Counselors, department administrators, and statutorily required staff are counted as if they had no noninstructional duties.

FUSION

Cumulative Sum of Existing & Proposed Space (2025-2031)

Planning

Rancho Santiago Community College District (870) Orange Education Center (874)

Priority & Year of Occupancy (a)	Classroom 100's (b)	Laboratory 200's (c)	Office 300's (d)	Library 400's (e)	AV Radio TV 530-535 (f)	P.E. 520-525 (g)	Assembly 610 & 615 (h)	Inactive 050-070 (i)	All Other Areas (j)	Total ASF (k)
Total ASF	16,313	2,273	8,422	0	0	0	0	0	2,559	29,567
10	2029	OEC REMEDIATION AND REPLACEMENT								
	0	0	0	0	0	0	0	0	0	0
	16,313	2,273	8,422	0	0	0	0	0	2,559	29,567
Total Existing and Proposed Space	16,313	2,273	8,422	0	0	0	0	0	2,559	29,567

FUSION

Capacity of Net Existing On-Campus ASF

Planning

Rancho Santiago Community College District (870)

Orange Education Center (874)

Classrooms, Classroom Service (Room Use Code 100s)

Summary	Total Net ASF	ASF per 100 WSCH	Total Capacity WSCH
Classroom Space	16,313	63.1	25,853

Laboratories & Laboratory Service Area (Room Use Codes 210, 215, 220, 225, 230, 235, 255)

TOP Code	Net ASF	ASF per 100 WSCH	Capacity WSCH
4999 - Other Interdisciplinary Studies	2,273	257.0	884
Summary	Total Net ASF	ASF per 100 WSCH	Total Capacity WSCH
Lab Space	2,273	257.0	884

Office & Office Service Areas (Room Use Code 300s)

Summary	Total Net ASF	ASF per FTE	Total Capacity FTE
Office Space	8,422	200.0	42

FUSION

Project Intent & Scope

Planning

**Rancho Santiago Community College District (870)
Orange Education Center (874)**

District Priority & Project: **10 OEC REMEDIATION AND REPLACEMENT**

Project Type: Reconstruction
 Total Estimated Cost: \$79,009,140
 Anticipated Source(s) of Funds: Non-State
 Type of Construction:
 Seismic Retrofit:
 If Existing - Age:
 If Existing - Condition:

Anticipated Time Schedule

	Land Acquisition	Preliminary Plans	Working Drawings	Construction	Equipment	Occupancy
Year	0	2022	2022	2024	2026	2029-30
Estimated Cost	\$0	\$1,000,000	\$2,500,000	\$73,509,140	\$2,000,000	

Explain why this project is needed:

The Santiago Canyon College Orange Education Center is the major adult education service provider in the Orange area. This facility provides a broad-based programs which meets the educational needs of the community. Open entry/open exit classes allow students to register anytime during the school year and provide maximum flexibility in program scheduling.

FUSION

Project Intent & Scope

Planning

Rancho Santiago Community College District (870) Orange Education Center (874)

District Priority & Project: **10 OEC REMEDIATION AND REPLACEMENT**

Outline of Project Space - Buildings and Remodelings

	Classroom 100s	Laboratory 210-255	Office 300s	Library 400s	AV/TV 530-535	All Other	Total ASF
Project Primary	22,590	4,440	9,644	654	0	20,852	58,180
Project Secondary	-22,590	-4,440	-9,644	-654	0	-20,852	-58,180
Project Net ASF	0	0	0	0	0	0	0

Project Net Capacity

Classrooms, Classroom Service (Room Use Code 100s)

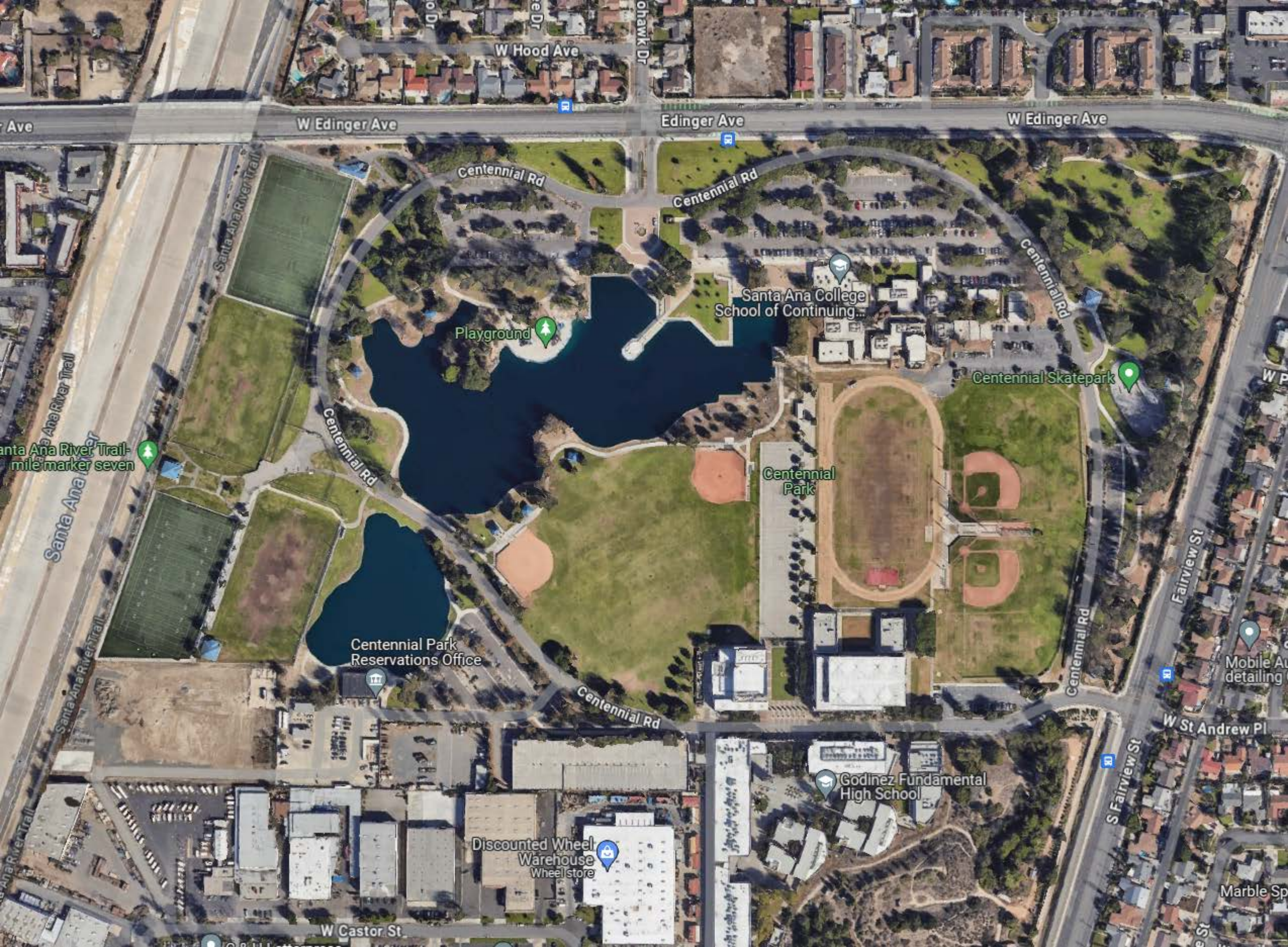
Summary	Net ASF	ASF per 100 WSCH	Capacity WSCH
Classroom Space	0	0.0	0

Laboratories & Laboratory Service Area (Room Use Codes 210, 215, 220, 225, 230, 235, 255)

TOP Code	Primary Effect			Secondary Effect		
	Net ASF	ASF per 100 WSCH	Capacity WSCH	Net ASF	ASF per 100 WSCH	Capacity WSCH
-						
Summary	Net ASF			Capacity WSCH		
Lab Space				0		0

Office & Office Service Areas (Room Use Code 300s)

Summary	Net ASF	ASF per FTE	Capacity FTE
Office Space	0	0.0	0.00



W Hood Ave

W Edinger Ave

Edinger Ave

W Edinger Ave

Centennial Rd

Centennial Rd

Centennial Rd

Centennial Rd

Centennial Rd

Centennial Rd

Fairview St

S Fairview St

W St Andrew Pl

W Castor St

Santa Ana College
School of Continuing...

Playground

Centennial Skatepark

Centennial
Park

Centennial Park
Reservations Office

Godinez Fundamental
High School

Discounted Wheel
Warehouse
Wheel store

Mobile Auto
detailing

Marble Sp

Santa Ana River Trail
mile marker seven

Santa Ana River Trail

Santa Ana River Trail

Santa Ana River Trail

Certification of Inventory for Fiscal Year: 2023 - 2024

Campus Name: **Centennial Education Center**
Certified ASF: **55,739**
Certified OGSF: **73,748**

District Approval



Authorized Signature

10/2/23

Date

Marvin Martinez, Chancellor

Printed Name

State Approval



Authorized Signature

5/6/2024

Date

Included:

(2) Signed Copies of Report 17 Certification Sheet if the submission was not certified and submitted electronically by the CBO.

FUSION

Campus Capacity/Load Ratios

Planning

Rancho Santiago Community College District (870)

Centennial Education Center (875)

Campus Lecture Capacity/Load Ratio

No. Project	Lect ASF	WSCH	Occupancy	2025-26	2026-27	2027-28	2028-29	2029-30	2030-31	2031-32
9 CEC RENOVATION/REPLACEMENT										
	0	0	2029-30					28,937		
Centennial Education Center								121%		
Lecture Summary / Totals				2025-26	2026-27	2027-28	2028-29	2029-30	2030-31	2031-32
Lecture ASF	Actual*/Projected WSCH			24,159	24,091	24,023	23,955	23,888	23,770	23,652
18,259	Cumulative Capacity			28,937	28,937	28,937	28,937	28,937	28,937	28,937
	Capacity/Load Ratio			120%	120%	120%	121%	121%	122%	122%

FUSION

Campus Capacity/Load Ratios

Planning

Rancho Santiago Community College District (870)

Centennial Education Center (875)

Campus Lab Capacity/Load Ratio

No. Project	Lab ASF	WSCH	Occupancy	2025-26	2026-27	2027-28	2028-29	2029-30	2030-31	2031-32
9 CEC RENOVATION/REPLACEMENT										
	0	0	2029-30					3,226		
Centennial Education Center								19%		
Lab Summary / Totals				2025-26	2026-27	2027-28	2028-29	2029-30	2030-31	2031-32
Lab ASF	Actual*/Projected WSCH			17,494	17,445	17,396	17,347	17,298	17,212	17,127
4,129	Cumulative Capacity			3,226	3,226	3,226	3,226	3,226	3,226	3,226
	Capacity/Load Ratio			18%	18%	19%	19%	19%	19%	19%

FUSION

Campus Capacity/Load Ratios

Planning

Rancho Santiago Community College District (870)

Centennial Education Center (875)

Campus Office Capacity/Load Ratio

No. Project	Off ASF	FTE	Occupancy	2025-26	2026-27	2027-28	2028-29	2029-30	2030-31	2031-32
9 CEC RENOVATION/REPLACEMENT										
	0	0	2029-30					70		
Centennial Education Center								45%		
Office Summary / Totals				2025-26	2026-27	2027-28	2028-29	2029-30	2030-31	2031-32
Office ASF	Actual*/Projected FTE			144	147	150	153	156	159	162
12,322	Cumulative Capacity			70	70	70	70	70	70	70
	Capacity/Load Ratio			49%	48%	47%	46%	45%	44%	43%

FUSION

Campus Capacity/Load Ratios

Planning

Rancho Santiago Community College District (870)

Centennial Education Center (875)

Campus AV/TV Capacity/Load Ratio

No. Project	AV/TV ASF Occupancy	2025-26	2026-27	2027-28	2028-29	2029-30	2030-31	2031-32
-------------	---------------------	---------	---------	---------	---------	---------	---------	---------

AV/TV Summary / Totals		2025-26	2026-27	2027-28	2028-29	2029-30	2030-31	2031-32
AV/TV ASF	Actual*/Projected ASF	4,317	4,311	4,305	4,300	4,294	4,288	4,283
0	Cumulative Capacity	0	0	0	0	0	0	0
	Capacity/Load Ratio	0%	0%	0%	0%	0%	0%	0%

FUSION

Load Distribution & Staff Forecast

Planning

Rancho Santiago Community College District (870) Centennial Education Center (875)

Campus Load Distribution

	Instructional Staff FTE	Total Campus WSCH	Off-Campus WSCH	On-Campus WSCH	P.E. Laboratory WSCH	On-Campus Lecture WSCH	On-Campus Laboratory
Actual Fall							
2022	114	72,091	9,588	62,503	0	25,626	36,877
2023	140	80,426	9,699	70,727	0	22,399	48,327
Forecast							
2024	141	54,246	12,477	41,769	0	24,226	17,543
2025	144	54,094	12,442	41,652	0	24,159	17,494
2026	147	53,943	12,407	41,536	0	24,091	17,445
2027	150	53,791	12,372	41,419	0	24,023	17,396
2028	153	53,640	12,337	41,303	0	23,955	17,347
2029	156	53,488	12,302	41,186	0	23,888	17,298
2030	159	53,223	12,241	40,982	0	23,770	17,212

FUSION

Load Distribution & Staff Forecast

Planning

Rancho Santiago Community College District (870) Centennial Education Center (875)

FTE Instruction Staff Worksheet - Fall 2024

College Instructional Staff, Fall Term. Included are all certificated staff for day, extended day, and adult education except those whose office is located off-campus.

Staff Type (a)	Total Certificated Instructional and Statutory Staff FTE (b)	Non-Instructional Portion of FTE (c)	Net Total Instructional and Statutory Staff FTE (b-c)
Instructor	99	0	99
Counselor Include certified special program coordinators, economic opportunity program, coordinators, statutory and Title 5 required staff, et. al.	11	0	11
Department Administrator	31	0	31
Librarian Include certificated director of audio/visual, et. al.	1	1	0
Institutional Administrator Include certificated persons with responsibilities covering the entire institution, such as Superintendent, Assistant Superintendent, President, Dean of Instruction, Director of Data Processing, et. al.	1	1	0
Projected 2024 Totals	143	2	141

Column (b) is the total number of Column (a) distributed to categories

Column (c) is the fraction of time express as Full-Time Equivalentents devoted to noninstructional work.

Counselors, department administrators, and statutorily required staff are counted as if they had no noninstructional duties.

FUSION

Load Distribution & Staff Forecast

Planning

Rancho Santiago Community College District (870) Centennial Education Center (875)

FTE Instruction Staff Worksheet - Fall 2025

College Instructional Staff, Fall Term. Included are all certificated staff for day, extended day, and adult education except those whose office is located off-campus.

Staff Type (a)	Total Certificated Instructional and Statutory Staff FTE (b)	Non-Instructional Portion of FTE (c)	Net Total Instructional and Statutory Staff FTE (b-c)
Instructor	102	0	102
Counselor Include certified special program coordinators, economic opportunity program, coordinators, statutory and Title 5 required staff, et. al.	11	0	11
Department Administrator	31	0	31
Librarian Include certificated director of audio/visual, et. al.	1	1	0
Institutional Administrator Include certificated persons with responsibilities covering the entire institution, such as Superintendent, Assistant Superintendent, President, Dean of Instruction, Director of Data Processing, et. al.	1	1	0
Projected 2025 Totals	146	2	144

Column (b) is the total number of Column (a) distributed to categories

Column (c) is the fraction of time express as Full-Time Equivalentents devoted to noninstructional work.

Counselors, department administrators, and statutorily required staff are counted as if they had no noninstructional duties.

FUSION

Load Distribution & Staff Forecast

Planning

Rancho Santiago Community College District (870) Centennial Education Center (875)

FTE Instruction Staff Worksheet - Fall 2026

College Instructional Staff, Fall Term. Included are all certificated staff for day, extended day, and adult education except those whose office is located off-campus.

Staff Type (a)	Total Certificated Instructional and Statutory Staff FTE (b)	Non-Instructional Portion of FTE (c)	Net Total Instructional and Statutory Staff FTE (b-c)
Instructor	105	0	105
Counselor Include certified special program coordinators, economic opportunity program, coordinators, statutory and Title 5 required staff, et. al.	11	0	11
Department Administrator	31	0	31
Librarian Include certificated director of audio/visual, et. al.	1	1	0
Institutional Administrator Include certificated persons with responsibilities covering the entire institution, such as Superintendent, Assistant Superintendent, President, Dean of Instruction, Director of Data Processing, et. al.	1	1	0
Projected 2026 Totals	149	2	147

Column (b) is the total number of Column (a) distributed to categories

Column (c) is the fraction of time express as Full-Time Equivalentents devoted to noninstructional work.

Counselors, department administrators, and statutorily required staff are counted as if they had no noninstructional duties.

FUSION

Load Distribution & Staff Forecast

Planning

Rancho Santiago Community College District (870) Centennial Education Center (875)

FTE Instruction Staff Worksheet - Fall 2027

College Instructional Staff, Fall Term. Included are all certificated staff for day, extended day, and adult education except those whose office is located off-campus.

Staff Type (a)	Total Certificated Instructional and Statutory Staff FTE (b)	Non-Instructional Portion of FTE (c)	Net Total Instructional and Statutory Staff FTE (b-c)
Instructor	108	0	108
Counselor Include certified special program coordinators, economic opportunity program, coordinators, statutory and Title 5 required staff, et. al.	11	0	11
Department Administrator	31	0	31
Librarian Include certificated director of audio/visual, et. al.	1	1	0
Institutional Administrator Include certificated persons with responsibilities covering the entire institution, such as Superintendent, Assistant Superintendent, President, Dean of Instruction, Director of Data Processing, et. al.	1	1	0
Projected 2027 Totals	152	2	150

Column (b) is the total number of Column (a) distributed to categories

Column (c) is the fraction of time express as Full-Time Equivalentents devoted to noninstructional work.

Counselors, department administrators, and statutorily required staff are counted as if they had no noninstructional duties.

FUSION

Load Distribution & Staff Forecast

Planning

Rancho Santiago Community College District (870) Centennial Education Center (875)

FTE Instruction Staff Worksheet - Fall 2028

College Instructional Staff, Fall Term. Included are all certificated staff for day, extended day, and adult education except those whose office is located off-campus.

Staff Type (a)	Total Certificated Instructional and Statutory Staff FTE (b)	Non-Instructional Portion of FTE (c)	Net Total Instructional and Statutory Staff FTE (b-c)
Instructor	111	0	111
Counselor Include certified special program coordinators, economic opportunity program, coordinators, statutory and Title 5 required staff, et. al.	11	0	11
Department Administrator	31	0	31
Librarian Include certificated director of audio/visual, et. al.	1	1	0
Institutional Administrator Include certificated persons with responsibilities covering the entire institution, such as Superintendent, Assistant Superintendent, President, Dean of Instruction, Director of Data Processing, et. al.	1	1	0
Projected 2028 Totals	155	2	153

Column (b) is the total number of Column (a) distributed to categories

Column (c) is the fraction of time express as Full-Time Equivalentents devoted to noninstructional work.

Counselors, department administrators, and statutorily required staff are counted as if they had no noninstructional duties.

FUSION

Load Distribution & Staff Forecast

Planning

Rancho Santiago Community College District (870) Centennial Education Center (875)

FTE Instruction Staff Worksheet - Fall 2029

College Instructional Staff, Fall Term. Included are all certificated staff for day, extended day, and adult education except those whose office is located off-campus.

Staff Type (a)	Total Certificated Instructional and Statutory Staff FTE (b)	Non-Instructional Portion of FTE (c)	Net Total Instructional and Statutory Staff FTE (b-c)
Instructor	114	0	114
Counselor Include certified special program coordinators, economic opportunity program, coordinators, statutory and Title 5 required staff, et. al.	11	0	11
Department Administrator	31	0	31
Librarian Include certificated director of audio/visual, et. al.	1	1	0
Institutional Administrator Include certificated persons with responsibilities covering the entire institution, such as Superintendent, Assistant Superintendent, President, Dean of Instruction, Director of Data Processing, et. al.	1	1	0
Projected 2029 Totals	158	2	156

Column (b) is the total number of Column (a) distributed to categories

Column (c) is the fraction of time express as Full-Time Equivalentents devoted to noninstructional work.

Counselors, department administrators, and statutorily required staff are counted as if they had no noninstructional duties.

FUSION

Load Distribution & Staff Forecast

Planning

Rancho Santiago Community College District (870) Centennial Education Center (875)

FTE Instruction Staff Worksheet - Fall 2030

College Instructional Staff, Fall Term. Included are all certificated staff for day, extended day, and adult education except those whose office is located off-campus.

Staff Type (a)	Total Certificated Instructional and Statutory Staff FTE (b)	Non-Instructional Portion of FTE (c)	Net Total Instructional and Statutory Staff FTE (b-c)
Instructor	117	0	117
Counselor Include certified special program coordinators, economic opportunity program, coordinators, statutory and Title 5 required staff, et. al.	11	0	11
Department Administrator	31	0	31
Librarian Include certificated director of audio/visual, et. al.	1	1	0
Institutional Administrator Include certificated persons with responsibilities covering the entire institution, such as Superintendent, Assistant Superintendent, President, Dean of Instruction, Director of Data Processing, et. al.	1	1	0
Projected 2030 Totals	161	2	159

Column (b) is the total number of Column (a) distributed to categories

Column (c) is the fraction of time express as Full-Time Equivalentents devoted to noninstructional work.

Counselors, department administrators, and statutorily required staff are counted as if they had no noninstructional duties.

FUSION

Cumulative Sum of Existing & Proposed Space (2025-2031)

Planning

**Rancho Santiago Community College District (870)
Centennial Education Center (875)**

Priority & Year of Occupancy (a)	Classroom 100's (b)	Laboratory 200's (c)	Office 300's (d)	Library 400's (e)	AV Radio TV 530-535 (f)	P.E. 520-525 (g)	Assembly 610 & 615 (h)	Inactive 050-070 (i)	All Other Areas (j)	Total ASF (k)
Total ASF	18,259	4,129	12,322	6,496	0	0	0	250	14,283	55,739
9	2029	CEC RENOVATION/REPLACEMENT								
	0	0	0	0	0	0	0	0	0	0
	18,259	4,129	12,322	6,496	0	0	0	250	14,283	55,739
Total Existing and Proposed Space	18,259	4,129	12,322	6,496	0	0	0	250	14,283	55,739

FUSION

Capacity of Net Existing On-Campus ASF

Planning

Rancho Santiago Community College District (870)

Centennial Education Center (875)

Classrooms, Classroom Service (Room Use Code 100s)

Summary	Total Net ASF	ASF per 100 WSCH	Total Capacity WSCH
Classroom Space	18,259	63.1	28,937

Laboratories & Laboratory Service Area (Room Use Codes 210, 215, 220, 225, 230, 235, 255)

TOP Code	Net ASF	ASF per 100 WSCH	Capacity WSCH
0514 - Office Technology/Office Computer Applications	4,129	128.0	3,226
Summary	Total Net ASF	ASF per 100 WSCH	Total Capacity WSCH
Lab Space	4,129	128.0	3,226

Office & Office Service Areas (Room Use Code 300s)

Summary	Total Net ASF	ASF per FTE	Total Capacity FTE
Office Space	12,322	175.0	70

FUSION

Project Intent & Scope

Planning

**Rancho Santiago Community College District (870)
Centennial Education Center (875)**

District Priority & Project: **9 CEC RENOVATION/REPLACEMENT**

Project Type: Replacement
 Total Estimated Cost: \$113,289,107
 Anticipated Source(s) of Funds: Non-State
 Type of Construction:
 Seismic Retrofit:
 If Existing - Age:
 If Existing - Condition:

Anticipated Time Schedule

	Land Acquisition	Preliminary Plans	Working Drawings	Construction	Equipment	Occupancy
Year	0	2024	2024	2025	2025	2029-30
Estimated Cost	\$0	\$3,900,000	\$4,389,107	\$98,000,000	\$7,000,000	

Explain why this project is needed:

This project will renovate or replace the CEC Buildings.

FUSION

Project Intent & Scope

Planning

Rancho Santiago Community College District (870) Centennial Education Center (875)

District Priority & Project: **9 CEC RENOVATION/REPLACEMENT**

Outline of Project Space - Buildings and Remodelings

	Classroom 100s	Laboratory 210-255	Office 300s	Library 400s	AV/TV 530-535	All Other	Total ASF
Project Primary	13,893	3,071	10,379	5,284	0	8,541	41,168
Project Secondary	-13,893	-3,071	-10,379	-5,284	0	-8,541	-41,168
Project Net ASF	0	0	0	0	0	0	0

Project Net Capacity

Classrooms, Classroom Service (Room Use Code 100s)

Summary	Net ASF	ASF per 100 WSCH	Capacity WSCH
Classroom Space	0	0.0	0

Laboratories & Laboratory Service Area (Room Use Codes 210, 215, 220, 225, 230, 235, 255)

TOP Code	Primary Effect			Secondary Effect		
	Net ASF	ASF per 100 WSCH	Capacity WSCH	Net ASF	ASF per 100 WSCH	Capacity WSCH
-						
Summary	Net ASF			Capacity WSCH		
Lab Space	0			0		

Office & Office Service Areas (Room Use Code 300s)

Summary	Net ASF	ASF per FTE	Capacity FTE
Office Space	0	0.0	0.00