



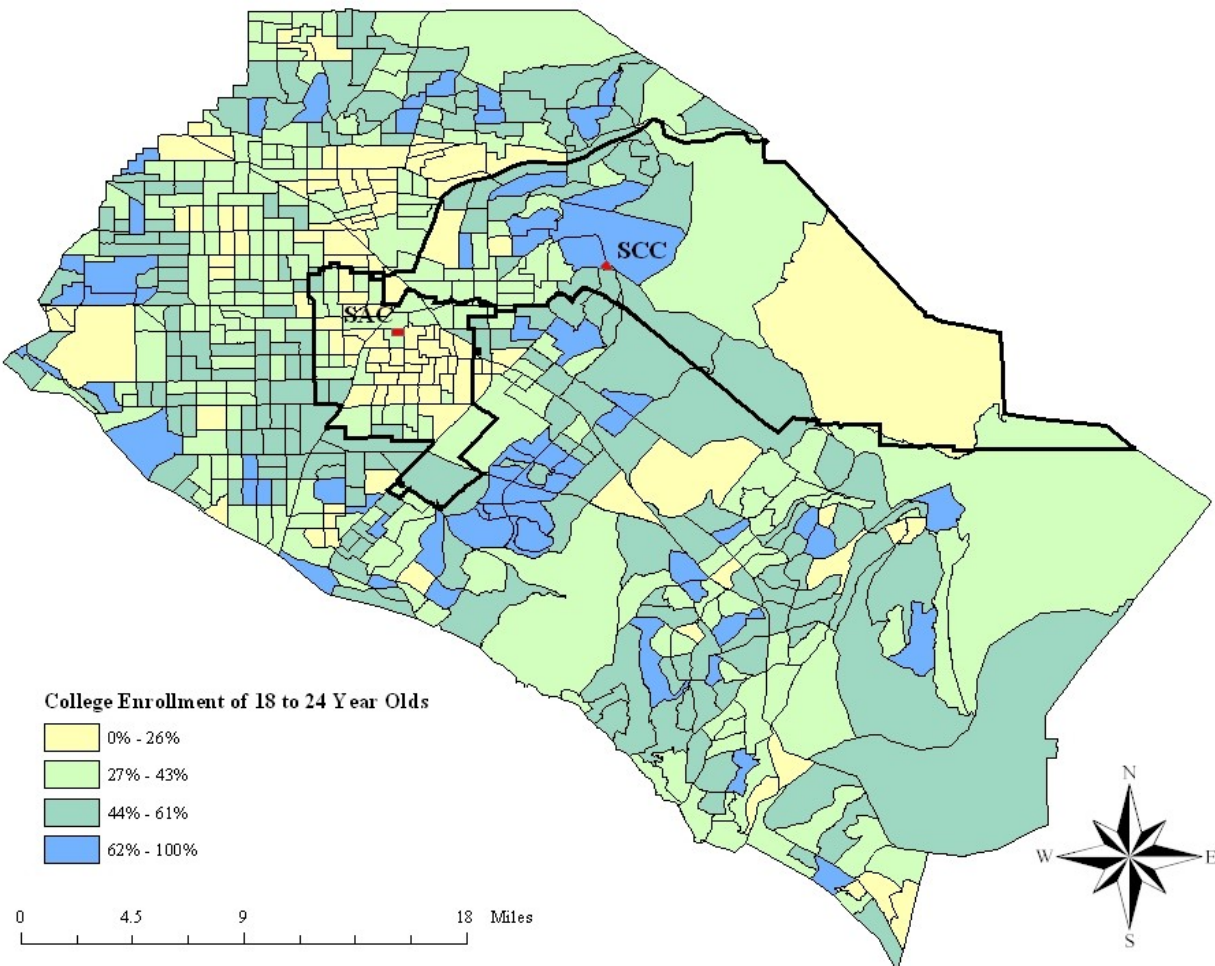
College Enrollment in RSCCD Service Area - Results from the 2000 U.S. Census

August 2003

In Spring 2003, the RSCCD Research Department published a comprehensive report on the findings of the 2000 U.S. Census as it relates to our District and community. From the wealth of information, key areas were identified as being of particular interest to RSCCD for purposes of program planning. Those areas are: educational attainment, income, and transportation. This is the first “factsheet” in a series that will summarize this 2000 census data.

RSCCD encompasses 122 census tracts, each home to an average of 5,676 residents, and 1,571 housing units. Thirty-three percent of those living within the RSCCD boundaries, between the ages of 18 and 24, were enrolled in any college or university during the April 2000 U.S. Census, compared to 39% in all of Orange County and 35% in California. Twenty-six percent of the SAC service area and 43% of the SCC service area 18 to 24 year olds were enrolled in college, representing a contrast between our two service areas.

College Enrollment of 18 to 24 Year Olds Residing in Orange County and RSCCD Service Area



**College Enrollment of 18 to 24 Year Olds
Residing in the RSCCD Service Area**

College Enrollment of 18 to 24 Year Olds Residing in the RSCCD Service Area		
Percent of 18 to 24 Year Olds Residents Attending College	Census Tracts in RSCCD Service Area	
	SAC Service Area N=74	SCC Service Area n=48
26% or Less	50% (37)	8% (4)
27% to 43%	41% (30)	46% (22)
44% to 61%	9% (7)	33% (16)
62% or more	0% (0)	13% (6)

Only nine percent (7 of 74) of Census Tracts in the SAC service area had over 44% of the 18 to 24 year olds attending a college or university, versus 46% (22 of 48) within the SCC service area. With the exception of SAC service area, few Census Tracts in Orange County have 26% or less of the 18 to 24 year olds enrolled in college. Unlike many other low-enrollment areas, population density is high in low-college enrollment Census Tracts in the SAC service area. Contributing factors to the low college enrollment may be:

- The high rate of high school drop-outs (among 16-19 year olds) in the SAC service area (16%), compared to the SCC service areas (6%), Orange County (10%), and California (10%).
- The low number of high school graduates (25 years of age and older) in the SAC service area (51%) compared to the SCC service area (85%), Orange County (80%), and California (77%).
- The high number of non-native English speakers (over the age of 5) residing in the SAC service area (44%), compared to the SCC service area (15%), Orange County (22%) and California (9%).
- “Market penetration” in the SAC service area by SAC and other local colleges is low.

While the local population remains “under served” due to lack of a high school background and English language limitations, the potential for the increase in student enrollments remains very high. The combined adult education and college level programs offered through SAC and SCC provide an essential combination of opportunity for English language development, high school completion, and college level education.